



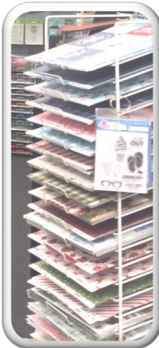
Village of Ashville
 P.O. Box 195
 200 East Station Street
 Ashville, OH 43103
Office: 740/983-6367 • **Fax:** 740/983-4705
Email: ashvilleohio@ashvilleohio.gov
Emergency Contact Numbers:
 Police Department 911 Street Department 614/402-9876
 Utility Department 614/214-9223 740/207-1842



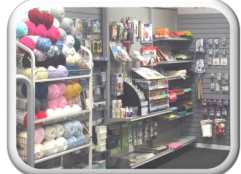
The Mayor's Column

There is a business in town that would be ideal in providing a nice activity any time of year. It is "Made On Main" located at 4 East Main Street, Ashville, Ohio.

The store has a variety of craft supplies for purchase including paper, yarn, paint, stamps & dies, etc. It also has a variety of homemade cards and gifts for any occasion.



Classes are held during the day, evening and weekends in all types of crafting interests.



The registration and class information are posted. There is no need to have any previous experience, they will walk you through each step. Check their website or Facebook page for upcoming events.



Hours

Monday
 Tuesday
 Thursday
 Friday
 10:00 am—5:30pm
 Saturday-10-5pm.
 Closed Wednesday & Sunday



Party/Meeting Room

The store also has a party/meeting room available to host birthday parties, anniversary, bridal or baby showers, graduation parties, and club meetings.



Craft Classes and Homemade Gifts:

Come learn a new skill or craft at Made on Main in quilting, card making, home décor, sewing, painting, mosaics and more.

Other contact information:

madeonmainashville@gmail.com
 (740) 983-6777



Holiday Reminder

The Village Office will be closed on January 21st for Martin Luther King Day. We will reopen on January 22nd at 8:00 am. Normal Trash Pick-up on Monday January 21st.



Village Council Meetings Every 1st and 3rd Monday Time: 6:30 pm
 Council Committee Meetings Every 2nd Monday at 6:30 pm
 - Holiday Mondays will move the meeting forward by one week

Next Month....

- ◆ 2019

Inside this issue:

Annual Dog License	2
Police Report	2

The Legislative Corner

This section provides the title to Ordinances and Resolutions being considered by Village Council. To read the entire text go to our website. Enacted legislation will be found under "Village Government"; and Legislation that is being considered can be found under "Village Council—Agenda".

- ◆ 2018-10 An Ordinance to Make Temporary Appropriations for The Next Year's Expenses and Other Expenditures of the Village of Ashville, State of Ohio, Based upon the Certificate of Estimated Resources Issued by the Pickaway County Budget Commission for the Fiscal Year Beginning January 1, 2019, and Declaring an Emergency.
- ◆ 01-2019 A resolution approving the restatement of the Madison Township Joint Economic Development District Agreement & Annexation Moratorium Agreement by reference and the Execution of an Amendment to Madison Township Joint Economic Development District Contract with the Township of Madison and the City of Columbus.

Jackie Ray's Grill

On December 19th Jackie Ray's Grill had an event to honor (Jack R.) Hooks, 72. He was born June 14, 1946 in Pickaway County, the son of Ray and Janet (Funk) Hooks. He passed away on November 17, 2018. In our October 28, 2015 Community Newsletter we announced a new restaurant in town, Jackie Ray's Grill. It became a popular destination, see below photo.

In addition to Jackie Ray's, Mr. Hook was the creator and owner of Jimmy Jacks, J.R. Hooks Cafe, and eight additional successful restaurants. He was an Eagle Scout, Rotarian, Elk and a member of the Circleville Heritage Nazarene Church, the Masonic Lodge and the Pumpkin Show Parade Committee. In addition to being an entrepreneur, his hobbies included skiing, scuba, travel, fishing, horses, cooking, and dining. He loved serving others in so many ways. He will be missed but one of his endeavors continues. When you go to 20 Cromley Street, go to the pick-up window, or call 740/983-0020 you are participating in one of his legacies.



ASHVILLE VISION STATEMENT

Remembering our rural heritage, Ashville will be a vibrant and friendly community, offering an enhanced quality of life achieved through planning, progress and collaboration. It will be a welcoming place where people want to live and businesses prosper.



Winter is here and the ponds are freezing over. Or are they? While we have not been able to locate statistics on how many people fall through the ice each year, we have learned that approximately 235 people are killed each year as a result of falling through ice. The ponds in our village have aeration devices that prevent ice from forming in the middle. While the ice on the edges of the ponds may seem thick enough to handle the weight of a person, the ice does get thinner the farther out one goes. The police department has already asked children to stay off of the ice on ponds in the village. Please help us to insure a safe winter and make sure our children stay off the ice.



Chief Jeffrey A. George

We are proud of our police!

Dog Tags

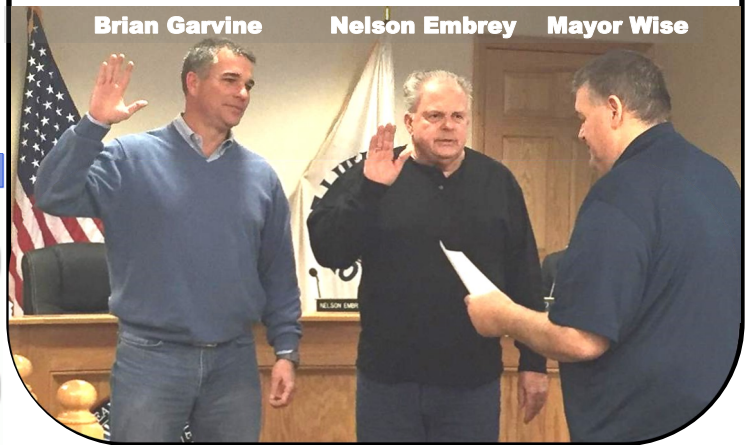
The Pickaway License went on sale December 1st. Purchased prior to January 31-\$15.75. Licenses are available at the Ashville Apothecary at 3400 St. Rt. 752, Wright-Poling Pickaway County Dog Shelter at 21253 Ringgold Southern Rd., Circleville, and Pickaway County Auditors Office. Info. at <http://pickaway.iviewauditor.com>

Brian Garvine Leaves Village Council



A vacancy now exists because a twelve year member of Village Council is moving from Ashville to be near his family. Brian Garvine announced on Monday, December 17th that this would be his last meeting. Brian Garvine took his oath of office on November, 2006. Brian chaired the Public Safety and the Parks & Recreation Committees. He is also a member of the Utility Committee. He was President Pro Tempore of Council. Council members expressed their appreciation for his service.

This has created a vacancy on Village Council. Please send résumés to Mayor Charles Wise, 200 East Station Street or email mayorwise@ashvilleohio.gov. If you wish to find out more about Ashville Government, it can be found throughout our website ashvilleohio.gov under Village Government, Village Departments, Services and the last banner links.



2018 Monthly & YTD Activity Report

The information below can be viewed as a pdf with larger text at www.ashvilleohio.gov under Community & Links "Newsletter"

If you wish to view a different monthly report you can access by going to our website www.ashvilleohio.gov and clicking on the department you wish to visit below:



Auxiliary Officers continue to volunteer supporting full time officers in patrolling the village and providing security for citizens of Ashville. Sergeant Rathburn continues to serve as Bailiff of Mayors Court which has been very busy. All officers completed firearms training with Officer Schmidt as Firearms Qualification Officer.

Submitted by Larry Rathburn Unit S4

Description	Jan	Feb	Mar	Apr	May	Jun	Jul	Aug	Sep	Oct	Nov	Dec	YTD Total	Projection	Ave	Mean	Measure
Incident Report	86	105	124	107	109	95	127	121	124	107	107		1,212	1,322	110.18	107.00	Report
Criminal Arrest/Charges	9	8	10	13	11	12	17	7	5	18	14		124	135	11.27	11.00	Files
Warrant Served/Arrests	3	5	2	2	2	4	2	3	4	5	7		39	43	3.55	3.00	Each
Traffic Citations	37	27	25	33	45	48	32	55	40	43	40		425	464	38.64	40.00	Each
Parking Tickets	1	0	0	17	0	0	0	0	0	0	0		18	20	1.64	0.00	Each
Warning Citations	72	57	64	56	70	56	58	78	74	62	90		737	804	67.00	64.00	Each
Crash Reports	6	3	7	4	4	5	8	6	8	1	7		59	64	5.36	6.00	Each
Code Violations	0	8	11	0	22	13	7	18	4	0	0		83	91	7.55	7.00	Each
Patrolled Miles	7,018	6,529	6,071	6,638	6,834	5,985	5,554	5,618	5,018	5,769	6,278		67,312	73,431	6,119.27	6,071.00	Miles
Auxiliary Hours	119	126	124	127	116	100	154	96	94	78	100		1,234	1,346.18	112.18	116.00	Hours

Description	Jan	Feb	Mar	Apr	May	Jun	Jul	Aug	Sep	Oct	Nov	Dec	YTD Total	Projection	Budget	Ave	Mean
General Revenue Fund Total	\$131,522.18	\$123,419.44	\$242,976.59	\$183,588.19	\$242,392.59	\$169,017.84	\$189,293.23	\$199,775.09	\$130,557.20				\$1,612,542.35	\$2,150,056.47	\$1,687,666.00	\$179,171.37	\$183,588.19
Income Tax Revenue	\$92,593.08	\$87,204.68	\$96,176.13	\$129,542.89	\$196,145.37	\$122,795.12	\$135,254.73	\$85,368.87	\$72,081.45				\$1,017,162.32	\$1,356,216.43	\$1,053,000.00	\$113,018.04	\$96,176.13
Police Expense 1000-110	\$41,510.88	\$72,177.08	\$72,656.58	\$78,238.65	\$68,979.49	\$63,804.65	\$60,607.50	\$59,705.79	\$61,060.04				\$578,740.66	\$771,654.21	\$867,273.00	\$64,304.52	\$63,804.65
Balance	\$90,011.30	\$51,242.36	\$170,320.01	\$105,349.54	\$173,413.10	\$105,213.19	\$128,685.73	\$140,069.30	\$69,497.16				\$1,033,801.69	\$1,378,402.25	\$820,393.00	\$114,866.85	\$119,783.54
Percentage of General Fund	31.56%	58.48%	29.90%	42.62%	28.46%	37.75%	32.02%	29.89%	46.77%				35.89%	35.89%	51.39%	35.89%	34.75%
Percentage of Income Tax	44.83%	82.77%	75.55%	60.40%	35.17%	51.96%	44.81%	69.94%	84.71%				56.90%	56.90%	82.36%	56.90%	66.34%