

Exhibit Three Detailed Description

SCOPE OF WORK – By Tebbe Civil Engineering, LLC



To provide a survey and civil engineering services and to prepare final site design plans, cost estimates and bidding for the proposed park:

Task A – Survey Services:

For this task, this proposal shall involve preparing the following items:

- 1) Control Survey – Control points will be set outside of the work area and be available for construction staking.
- 2) Field Data Collection – Topographic survey will be performed according to National Society of Professional Surveyors Model Standards for Topographic Surveys.
- 3) Utility Survey – Utilities will be surveyed based on Ohio Utilities Protection Service marking and all observed surface utility features.
- 4) CAD Model and Survey Drawing – A model of topographic and utility information will be prepared.

Task B – Concept Plans:

For this task, this proposal shall involve preparing the following items:

- 1) Prepare Concept Plans
 - a. Utilizing the survey information, 3 concept plans will be prepared for review by Village Staff.
- 2) We will meet with Village Staff to review concept plans and prepare a final concept plan based on feedback provided.

Task C – Construction Plans:

For this task, this proposal shall involve preparing the following items:

- 1) Final design plans will be prepared using Village format and specifications. We anticipate the preparation of the following design plans:
 - 1 Title Sheet
 - 2 General Notes and Estimate of Quantities
 - 2 Site Details
 - 1 Existing Conditions Plan
 - 1 Site Dimension Plan
 - 1 Utility Plan
 - 1 Grading Plan
 - 1 Site Grading Details
 - 3 Utility Profiles
 - 1 Basin Plan
 - 1 Basin Details
 - 1 Erosion Control Plan
 - 1 Erosion Control Plan and Details
- 17 Total Estimated Sheets
- 2) Prepare stormwater management report and calculations.
- 3) Prepare Ohio EPA NOI.
- 4) Prepare detailed Construction Cost Estimates.

Exhibit Three Detailed Description Continued

WORK – By POD design for the Pickaway County Park District Master Plan

The Village of Ashville and the Pickaway County Park District worked with Alex Camponeschi of POD design to develop a Master Plan for Ashville that would blend with the over all Master Planning that the Pickaway County Park District was creating. The following pages reflects those results for the Westside Park. The plan also includes the current main park on Station Street and a future park for the growth of the Village of Ashville.

ASHVILLE VILLAGE PARKS | PICKAWAY, OHIO
CONCEPTUAL SITE PLANNING



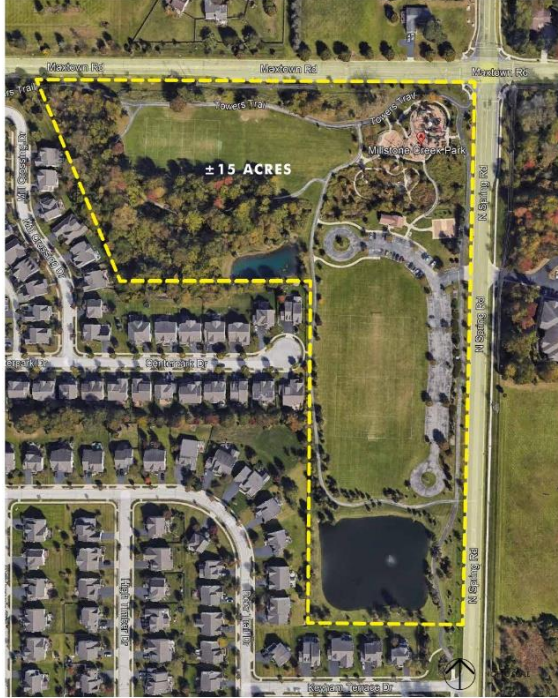
CONCEPTUAL SITE PLANNING | West Side Park



Exhibit Three Detailed Description Continued

PARK PRECEDENTS

Millstone Creek Park Westerville, OH



Current Park Features/Program (± 15 Acres)

- Pathway Network
- Open Green Space
- Multi-use Athletic Field
- Sport Court
- Playground
- Nature Play
- Shelter
- Restroom Facilities

Park Imagery



www.poddesign.net

Ashville Parks Master Planning | 09.06.2023

PARK PRECEDENTS

Community Park Boulder, CO



Current Park Features/Program (± 11 Acres)

- Pathway Network
- Performance Stage
- Open Green Space
- Basketball Courts
- Bocce Ball Courts
- Horseshoe Pit
- Dirt Bike Hill
- Spraground
- Playground
- Picnic Areas
- Restroom Facilities

Park Imagery

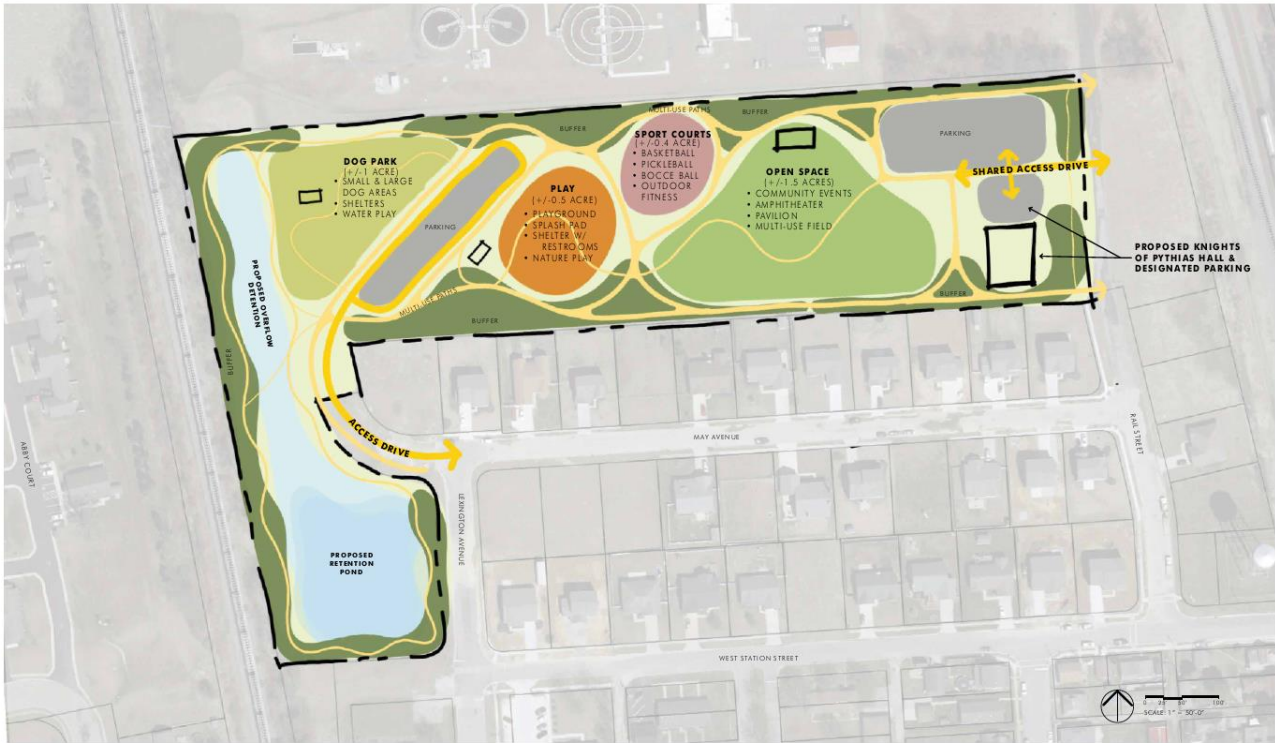


www.poddesign.net

Ashville Parks Master Planning | 09.06.2023

Exhibit Three Detailed Description Continued

CONCEPTUAL SITE DIAGRAM



INSPIRATIONAL IMAGERY | SPORT COURTS



Exhibit Three Detailed Description Continued

INSPIRATIONAL IMAGERY | PLAY FEATURES



INSPIRATIONAL IMAGERY | PAVILIONS



Exhibit Three Detailed Description Continued

INSPIRATIONAL IMAGERY | GREEN SPACE & TRAILS



INSPIRATIONAL IMAGERY | DOG PARK

