

Village of Ashville Construction of a Water Processing Facility



 *Village of Ashville's*
**Water Processing
Facility Project**

 *Ashville*

 *Ashville, Ohio*
Founded 1882



Successful partnerships start with **Fluid thinking**[®]

Jones & Henry Engineers, Ltd. 4357 Ferguson Drive, Suite 220, Cincinnati, Ohio 45245



Fluid Thinking® for Nearly 100 Years



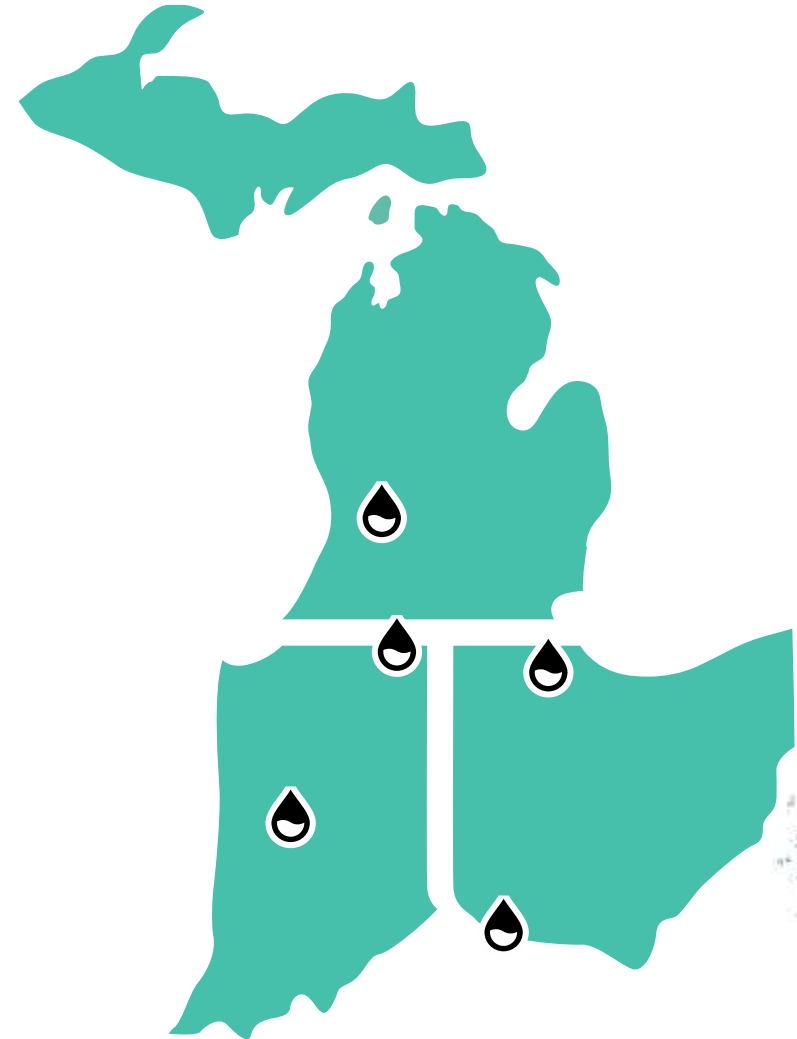
Founded in 1926. Still locally owned and operated today.





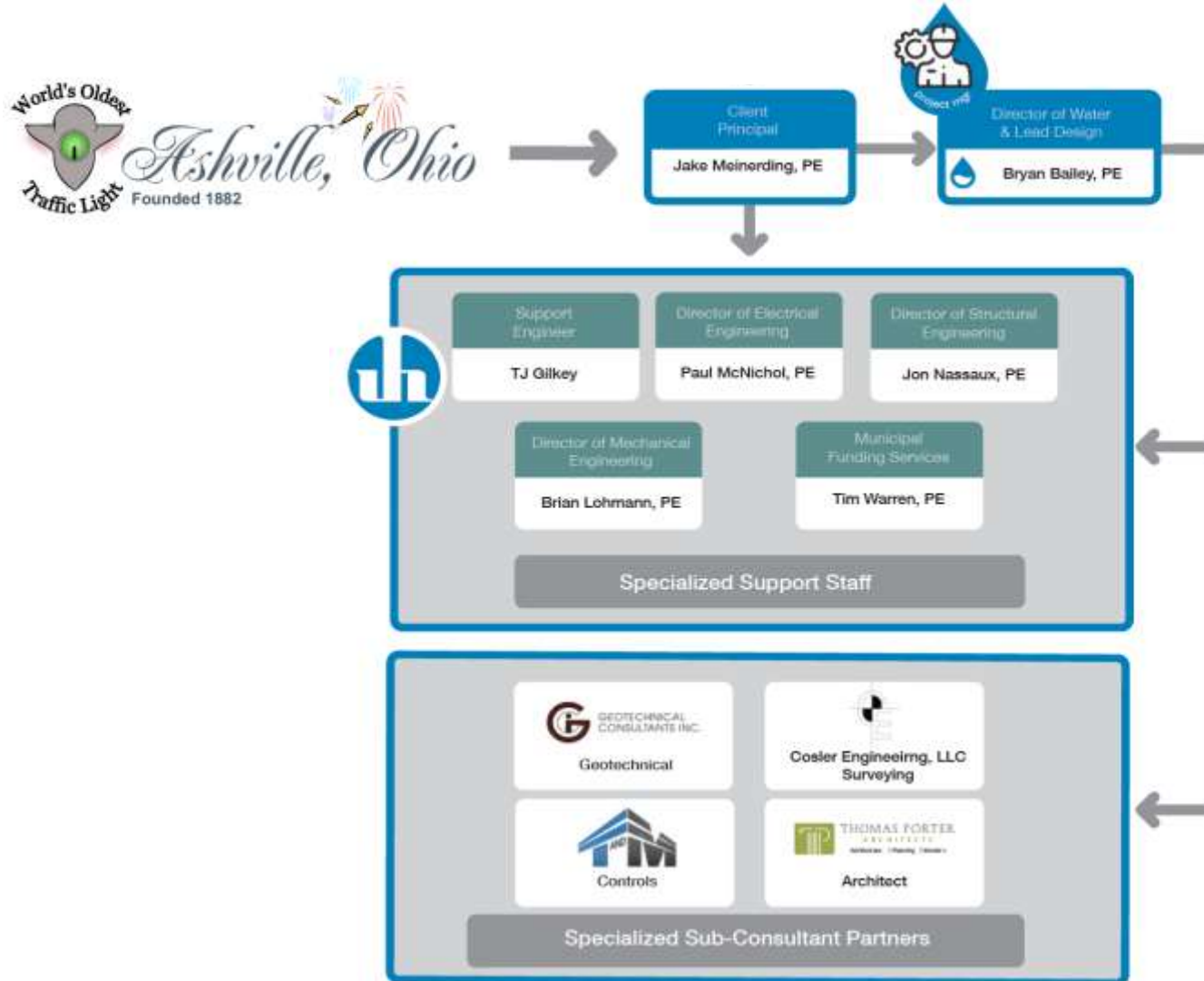
Regional Leadership. Custom Approach.

- Municipal Engineering (even our Discipline Engineers)
- Water Treatment Plant design ranging in capacity from 100 gpm to 32 mgd
- Team members were once public employees – including operators
- Every Job Starts and Ends with You
 - Customer - centric
 - Individual approach
 - Firm Principal on each project





Ashville's Jones & Henry Engineers Team





Project Steps

Planning Stages

- Thorough review of water plant including water quality testing at different stages of treatment.
- Incorporate findings of plant review and testing into alternatives section of General Plan.
- Format General Plan for Ohio EPA WSRLA funding and/or other funding source.
- Identify funding options and assist Village with applications and securing funding

Design & Construction Stages

- Preliminary Design
- Final Design
- Bidding
- Construction
- Commissioning and Operational Phase
- Funding Assistance throughout planning, design and construction phases.





General Plan

- Use the General Plan phase to determine what level of improvements are required.
- Detailed alternatives analysis
 - New facilities and use some existing facilities
 - Type of equipment, layouts, accessories
- Compare Capital, O&M and lifecycle costs
- Complete in format suitable for funding acquisition from WSRLA or other funding source.





Design Phase



Design must :

- Address all water quality issues
- Meet current and future capacity requirements
- Consider typical daily operations

- All aspects of design will be closely coordinated with Village input through monthly design meetings.
- Prepare drawings in Revit 3D to enhance visual illustration and understanding of new buildings.
- Assist with Bidding and ensure all documents meeting funding requirements.





Construction

- Oversee all construction administration.
- Limit disruptions and shut downs to existing system.
- Provide on-site representation during construction to ensure proper installation and document construction activities.
- Ensure equipment and entire water plant is successfully commissioned and assist with operations.



J&H completes projects like St. Marys Water Treatment Plant from the General Plan phase through the plant start up and commissioning.





Funding Assistance

Funding Programs	WPCLF / WSRLA	 OWDA	 COMMUNITY DEVELOPMENT BLOCK GRANT	 USDA Rural Development <small>Committed to the future of our communities.</small>	 OHIO PUBLIC WORKS FOR YOU	 EDA <small>U.S. ECONOMIC DEVELOPMENT ADMINISTRATION</small>
Number of Grants & Loans Achieved	44	29	12	14	51	5





Existing Water Treatment and Planned Improvements

- Current Issues:
 - Undersized
 - Aging facilities
 - Finished water quality is variable
 - Iron and hardness
- New Facilities
 - New Well to consider
 - New treatment facilities on same site
 - Brick buildings to match existing architecture
 - Include area to expand in future
 - Administration area (office, lab, controls)
 - Process (softening, conventional filtration)
 - Automated plant operations



Existing Water Treatment and Planned Improvements





Questions?



Successful partnerships start with Fluid thinking[®]

Jones & Henry Engineers, Ltd. 4357 Ferguson Drive, Suite 220, Cincinnati, Ohio 45245

thank
you

Jake Meinerding, PE

Client Principal

jmeinerding@JHEng.com

513-208-2926

Bryan Bailey, PE

Project Manager

bbailey@JHEng.com

513-528-5599

Sarah Helbig, Executive Director of Sales and Marketing

shelbig@JHEng.com

419-344-1438



Successful partnerships start with **Fluid thinking**[®]

Jones & Henry Engineers, Ltd. 4357 Ferguson Drive, Suite 220, Cincinnati, Ohio 45245