

General Plan Water System Improvements

Village of Ashville, Ohio
Draft March 28, 2023



REPORT 2023



Submitted by Jones & Henry Engineers, Ltd.
4357 Ferguson Drive, Suite 220, Cincinnati, OH 45245

Jones & Henry
Engineers

Table of Contents

Section 1 – Introduction	3
Section 2 – Purpose	4
Section 3 – Existing Situation	5
3.1 Raw Water	5
3.2 Treated Water.....	6
3.3 Drinking Water Problems.....	6
3.4 Existing Service Area and Population Served.....	6
3.5 Existing Water Demand	7
3.6 Existing Facilities	8
Section 4 – Future Conditions	19
4.1 Future Major Construction Projects.	19
4.2 Projected Service Area and Population	19
4.3 Projected Water Demand	20
Section 5 – Alternatives Considered	23
5.1 Regionalization – Connecting to Existing Nearby Water System	23
5.2 New Water Treatment Plant.....	23
5.3 Rehab Existing Facility.....	28
Section 6 – Alternative Selection	30
Section 7 – Basis of Design	31
Section 8 – Preliminary Estimates	34
8.1 New Water Treatment Plant Capital Costs	34
8.2 New Water Tower Capital Costs	35
8.3 User Rates and Funding	35
Section 9 – Public Participation	36
Section 10 – Environmental Issues	37

List of Tables

Table 1 Raw Water Quality	5
Table 2 Treated Water Quality	6
Table 3 Village of Ashville Population Data	7
Table 4 Pickaway County Population Data	7
Table 5 Customer Classification.....	7
Table 6 Water Demand (mgd)	8
Table 7 Filter Media Analysis Data	13
Table 8 Ashville Projected Service Area Population	19
Table 9 Water Projections and Projections	21
Table 10 IX vs. RO Cost Summary	26
Table 11 New Water Treatment Plant Capital Costs	34
Table 12 New Water Tower Capital Costs	35

List of Figures

Figure 1: Chlorine Storage Room
Figure 2: Chlorine Feed Point
Figure 3: Aerator
Figure 4: Access to Detention Tank
Figure 5: Filters 1 & 2
Figure 6: Filters 3 & 4
Figure 7: Clearwell
Figure 8: High Service Pumps
Figure 9: Softeners from 1948
Figure 10: Softeners from 1970
Figure 11: Generator and Electrical Control Panel
Figure 12: Building Conditions
Figure 13: Ashville Population Projection
Figure 14: Historical Production and Future Projections

Appendices

Appendix A – Existing Location Map
Appendix B – Site Plans
Appendix C – Process Flow Diagram

APPENDIX A

Existing Location Map

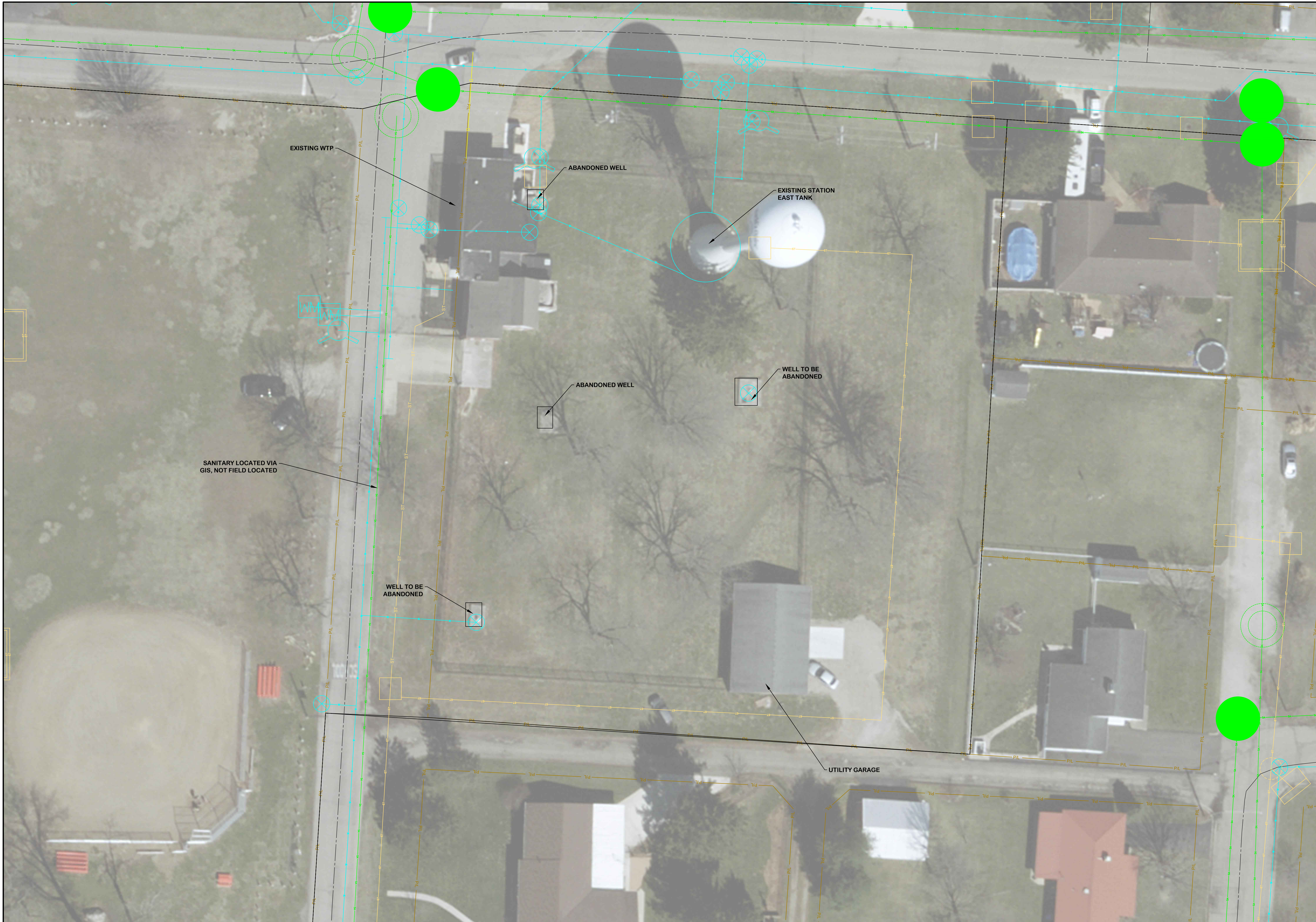
TOL-7988001FIGURES-FIGURE 1
3/6/2023 6:06 AM - BDRILL
3/6/2023 6:07 AM




EXISTING LOCATION MAP		
PROPOSED WTP		
NO. 1 2 3 4 5 6 7 8 9 10 11 12		
DATE		
REVISIONS AFTER ISSUED FOR BID		
BY		
Jones & Henry Engineers, Ltd.		
		
Fluid thinking® www.JHeng.com		
JOB NO.	1000-7988.001	
SCALE	1"=500'	
THIS LINE SCALES IF WHEN PLOTTED TO NOTED SCALE		
DESIGNED	DRAWN	CHECKED
LH	BJD	JDM
STATUS	PRELIMINARY	
DATE	1/3/23	
SHEET NO.		
FIG-1		
1 of 7		

© 2022 Microsoft Corporation © 2022 Maxar © CNES (2022) Distribution Airbus DS

TOL-7988001FIGURES-FIGURE 2
3/6/2023 6:06 AM - BDRILL
3/6/2023 6:07 AM



EXISTING SITE PLAN		PROPOSED WTP	
		NO.	BY
REVISIONS AFTER ISSUED FOR BID		NO.	DATE
Jones & Henry Engineers, Ltd.			
			
Fluid thinking® www.JHeng.com			
JOB NO. 1000-7988.001		SCALE 1"=20'	
THIS LINE SCALES IF WHEN PLOTTED TO NOTED SCALE			
DESIGNED LH	DRAWN BJD	CHECKED JDM	
STATUS: PRELIMINARY			
DATE: 1/3/23			
SHEET NO.			
FIG-2			
2 OF 7			

Please direct any questions
and additional instructions to:
Jake Meinerding, PE
Cincinnati Office Director
JMeinerding@JHEng.com
513-528-5599
direct: 513-208-2926



Jones & Henry
Engineers