

VILLAGE OF ASHVILLE 2ND QUARTERLY F & O REPORT



OhioEPA Director's Final Findings and Orders (F & O)

Construction of new Water Resource Recovery Facility (WRRF) in the orders listed as WWTP

The first section of this quarter report will deal with the status of the Water Resource Recovery Facility (WRRF). The first heading will discuss the design status. The second heading will deal with the status of obtaining funds for the WRRF.


DESIGN STATUS

AECOM replace URS as the name of the Engineering firm. It is still the same team of individuals. Jeffrey Kerr from AECOM reported that the facility has moved from last quarter being 40% complete to now being 60 to 70% complete. The Outfall Sewer and Force Main is 90 to 95% complete. They completed a review report to Village Council on January 26, 2014, see Attachment 1, Agenda and PowerPoint. Mr. Kerr provided council with a detailed report on the location of the Force Main, Outfall Sewer and the Water Resource Recovery Facility Site. The Permit to Install (PTI) will be submitted the third week of February 2015. The next heading will deal with the status of obtaining funds for the WRRF.

FINANCING STATUS

The first funding for this project involved Planning, Design, and Land Acquisition. Ohio Water Development Authority (OWDA) provided 1.11 million dollars for this purpose, Attachment 2. As indicated above land has been acquired and the design is progressing toward completion. So that Ashville can move forward once completed, it has submitted two applications. The first was to submit a Nomination Form to the Ohio Water Pollution Control Loan Fund (WPCLF), Attachment 2. Ashville has been approved for \$12,044,100 by the Ohio Water Development Authority, Attachment 3. Ashville has a Construction Loan and Grant Submitted to the Ohio Public Work Commission for \$500,000 and \$500,000, Attachment 4. A second grant request was made for paying interest during the construction phase. This is known as OPWC Loan Assistance/Credit Enhancement for \$225,523, Attachment 5. AECOM and Ashville has a meeting planned with DEFA on February 2, 2015, to review what is possible for financing this facility. Our plan will be to submit an Application for funding. More detail in next quarterly report.

WATER RESOURCE RECOVERY FACILITY WEBPAGE

This webpage can be accessed at www.ashvilleohio.gov. On the home page you click on the logo that was designed for this project, see above. That page will inform the residents the status of the project. By clicking on this icon  you can find all the following items:

- AECOM (URS) Report
- Planning and Design Items
- Applications for Financing
- In the future it will include the process for selecting the construction contractor

Attachment 1

Welcome to *Ashville's* Update on WRRF



Water Resource Recovery Facility (WRRF) *Village of Ashville*

On Line at:

www.ashvilleohio.gov

Ashville's WRRF Project



Attachment 1



Agenda

AECOM

277 West Nationwide Boulevard

Columbus, OH 43215-2566

Address Line 3

www.aecom.com

614 464 4500

tel

614 464 0588

fax

Subject	Water Resource Recovery Improvements, 2015
Date	January 26, 2015
Time	6:30 p.m.
Location	Ashville, Ohio
AECOM Project No.	14578119
Project Name	Ashville Water Resource Recovery Improvements Design

Ashville's WRRF Project



Attachment 1

DISCUSSION ITEMS:

1. Project Schedule

- The Ohio EPA has issued Findings and Orders that give a schedule for designing and constructing a new treatment facility. These orders were signed and finalized on June 16, 2014. These orders require:
 - 1) Design to be completed in 9 months (by March 2015),
 - 2) Construction to be initiated in 16 months (by October 2015), and
 - 3) Construction to be completed in 40 months (by October 2017).
- We estimate the following schedule based on funding agency requirements:
 - 1) Submit a PTI to Ohio EPA in mid February, 2015.
 - 2) Provide bidding in April/May 2015.
 - 3) Award project in June/July 2015.
 - 4) Begin construction in July/August, 2015.
 - 5) Complete construction in July/August, 2017.
- Funding by OPWC (if offered) will not allow construction to proceed prior to July, 2015.
- A conference call will be held with Ohio EPA, DEFA on February, 2, 2015 to discuss their required funding schedule.

Ashville's WRRF Project



Attachment 1

DISCUSSION ITEMS CONTINUED:

2. Work Completed to Date

- Design of WRRF (Part A) and Outfall Sewer and Force Main (Part B). Sewer and force main design is 90-95% complete.
- WRRF design is 60%-70% complete.

3. Items Required Prior to Bidding

- Sign and record two easements on Scioto Street.
- Complete annexation of WRRF property and assign an address for utilities.
- Obtain Permit to Install and revised NPDES Permit from Ohio EPA.
- Submit plans to utility companies and address their comments.

January 26, 2015

Ashville's WRRF Project



Attachment 1

DISCUSSION ITEMS CONTINUED:

4. Items Required Prior to Construction

- Receive building permit approvals.
- Request and receive Notice to Proceed from OPWC (if funding offered).
- Submit bid packages, bid tabulation, engineer's letter and other documents requested by Ohio EPA DEFA.
- Execute final loan agreement and receive funding approval from DEFA.
- Execute contracts with selected contractor at Preconstruction Meeting. Issue Notice of Award and Notice to Proceed. Receive other documents from contractor.

January 26, 2015

Ashville's WRRF Project

Attachment 1



DISCUSSION ITEMS CONTINUED:

5. Water Resource Recovery Facility (See Part A Plans)

- See attached plan of proposed improvements.
- Removal of trees is needed in fence row south of the plant site due to sewer, force main and driveway construction. Replace deciduous trees with conifers to provide screening of the site.
- Plant driveways currently shown as concrete, asphalt or gravel. Gravel driveways can be provided to reduce cost.
- Extend Rail Street as a drive to the WRRF site. Add farm gate.
- Provide drive from SR 752 to WRRF site. Add farm gate.
- Provide demolition of old WWTP structures and equipment except for Administration Building and Maintenance Building.

January 26, 2015

Ashville's WRRF Project



Attachment 1

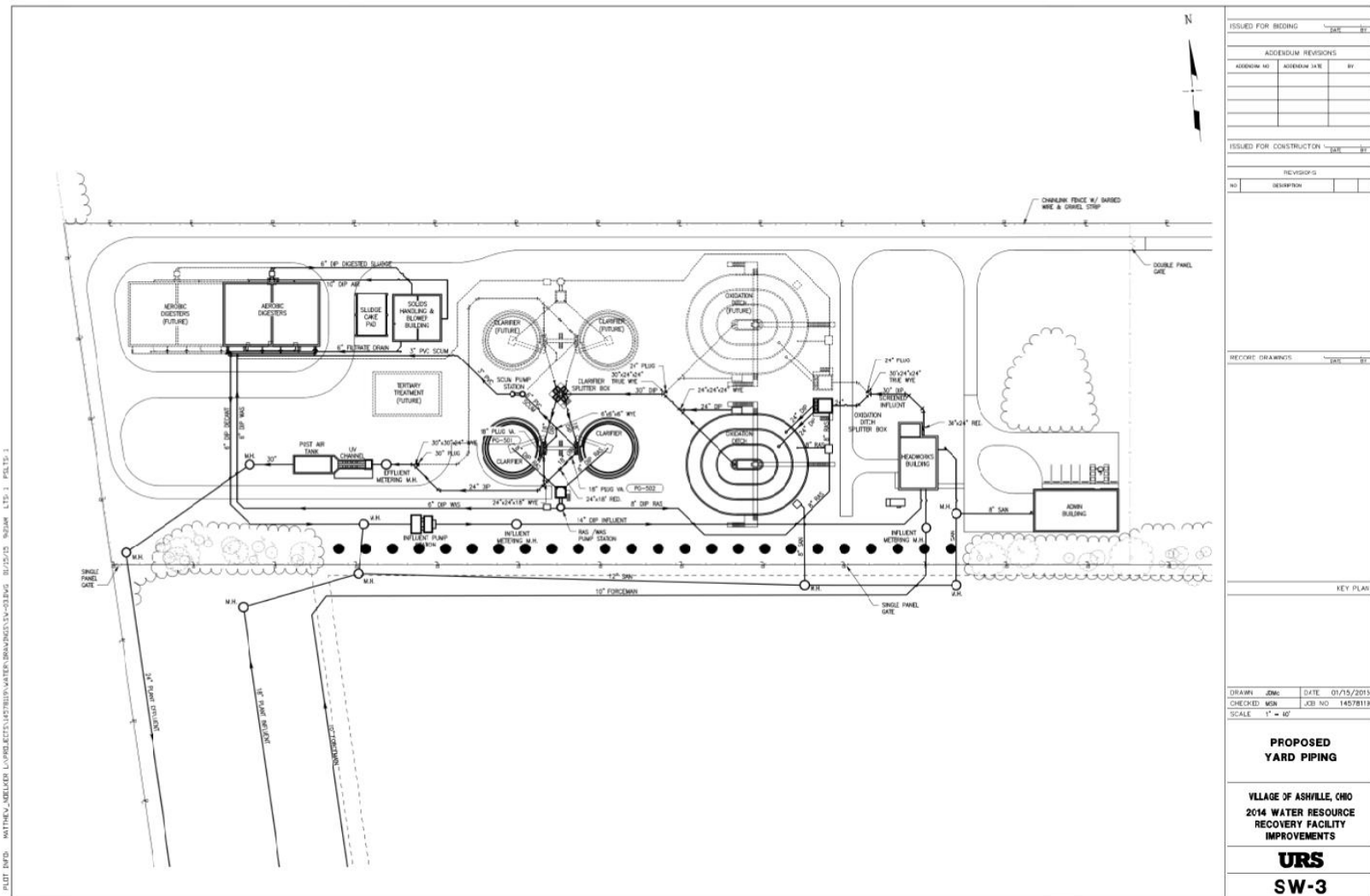
DISCUSSION ITEMS CONTINUED:

6. Force Main and Outfall Sewer Alignments (See Part B Plans)

- See attached plan showing proposed alignments.
- The 10" forcemain alignment runs north along Scioto Street, west along Rich Street, and north along Lexington Street. A new pump station at the old WWTP site will pump north to the new WRRF site
- The 24" outfall sewer will convey treated wastewater east along Station Street, south in alley west of Jefferson Ave, east along Rich Street, and south along Scioto Street and discharge to an existing outfall to Little Walnut Creek.
- Village staff are currently reviewing plans.
- Scioto Street south of Main Street will be completely replaced.
- Water/sewer/storm work in Main Street is required. We propose to maintain one- lane traffic.

Ashville's WRRF Project

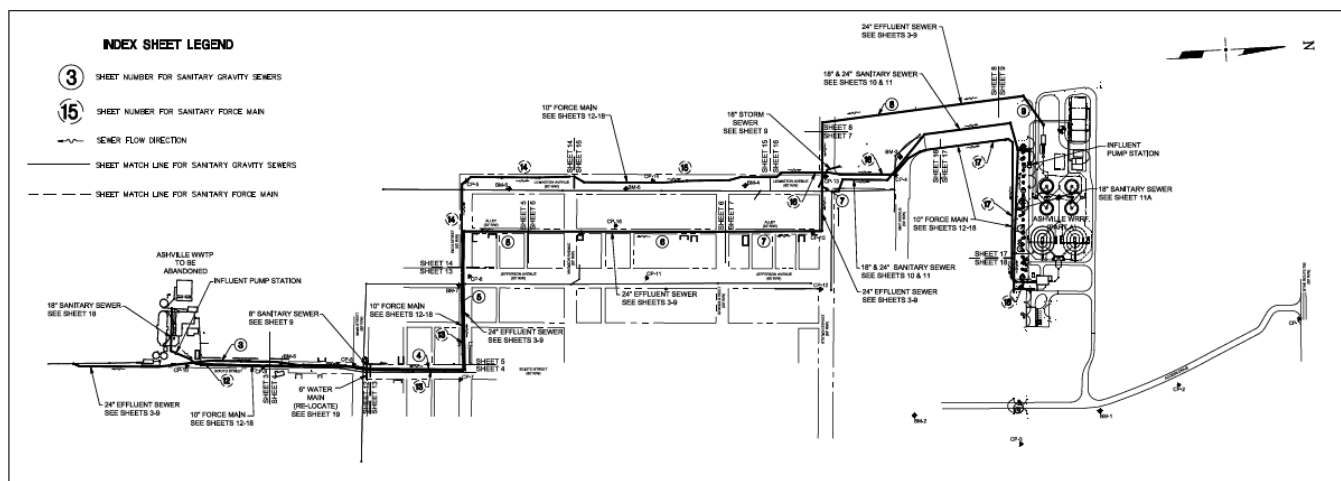
Attachment 1



January 26, 2015

Ashville's WRRF Project

Attachment 1



- INDEX SHEET LEGEND**
- ③ SHEET NUMBER FOR SANITARY GRAVITY SEWERS
 - ⑮ SHEET NUMBER FOR SANITARY FORCE MAIN
 - > SEWER FLOW DIRECTION
 - SHEET MATCH LINE FOR SANITARY GRAVITY SEWERS
 - SHEET MATCH LINE FOR SANITARY FORCE MAIN

PROJECT CONTROL				
Point #	Northing	Easting	Elevation	Desc.
1	628060.48	1838622.78	714.23	L PIN
2	627388.94	1840563.94	713.74	L PIN
3	628940.05	1840289.33	714.08	L PIN
4	628405.88	1839107.10	708.00	MAG NAIL
5	624754.68	1839995.31	705.85	MAG NAIL
6	624746.88	1839615.11	709.06	L PIN
7	624885.87	1839899.00	706.05	MAG NAIL
8	624882.82	1839807.43	706.68	MAG NAIL
9	623882.01	1838800.40	703.68	MAG NAIL
10	623586.72	1839777.83	691.28	MAG NAIL
11	625482.40	1839518.11	708.18	L PIN
12	626184.30	1839601.77	708.75	L PIN
13	626209.38	1839146.00	706.30	MAG NAIL
14	625507.87	1839127.68	708.01	MAG NAIL
15	626142.29	1839374.38	708.85	HPK
16	625347.62	1839301.89	707.70	HPK

PROJECT BENCH MARKS

ALL SURVEY CONTROL ARE BASED ON THE USGS NAVD 83 AND NAD 83(1993) REFERENCE DATUM. SURVEY WAS PERFORMED IN STATE PLANE COORDINATES.

BM-1 RBB IN POLE ELEV=713.58	BM-2 RBBT ON ELEV=713.71	BM-3 ARROW BOLT ON F. IVD. ELEV=708.15	BM-6 ARROW BOLT ON F. IVD. ELEV=707.87
BM-3 ARROW BOLT ON F. IVD. ELEV=711.38	BM-5 ARROW BOLT ON F. IVD. ELEV=709.20	BM-7 RBBT ON F. IVD. ELEV=708.70	BM-8 ARROW BOLT ON F. IVD. ELEV=703.57

SYMBOL LEGEND

EXISTING		EXISTING	
—	FENCE	△	SURVEY CONTROL POINT
—	THEE LINE	⊗	IRON PIPE FOUND
—	PROPERTY LINE	⊗	IRON PIN FOUND
—	RIGHT-OF-WAY	⊗	BENCHMARK
—	EDGE OF PAVEMENT	⊗	DECIDUOUS TREE
—	EDGE OF CURB	⊗	NON-DECIDUOUS TREE
—	EDGE OF SIDEWALK	⊗	SHRUB/BUSH
—	8" SAN	⊗	STUMP
—	18" STM	⊗	SIGN
—	GAS	⊗	GUY WIRE
—	WATER	⊗	STORM MANHOLE
—	TELEPHONE UNDERGROUND	⊗	STORM CURB INLET
—	OVERHEAD UTILITY	⊗	CATCH BASIN SQUARE
—	ELECTRIC UNDERGROUND		

NEW

—	SANITARY & STORM SEWER (18" OR GREATER)
—	SANITARY SEWER (15" OR LESS)
—	8" WATER MAIN
●	SANITARY MANHOLE
⊗	STORM MANHOLE
⊗	CATCH BASIN
⊗	CURB INLET
⊗	TREE REMOVED

ISSUED FOR BIDDING		
NO.	DESCRIPTION	DATE
1	ISSUED FOR BIDDING	05/30/14

ISSUED FOR CONSTRUCTION

REVISIONS

NO. DESCRIPTION DATE

RECORD DRAWINGS

DESIGNED AM DATE 05/30/14
CHECKED MN JOB NO 1457819
SCALE HORIZ: 1"=200'

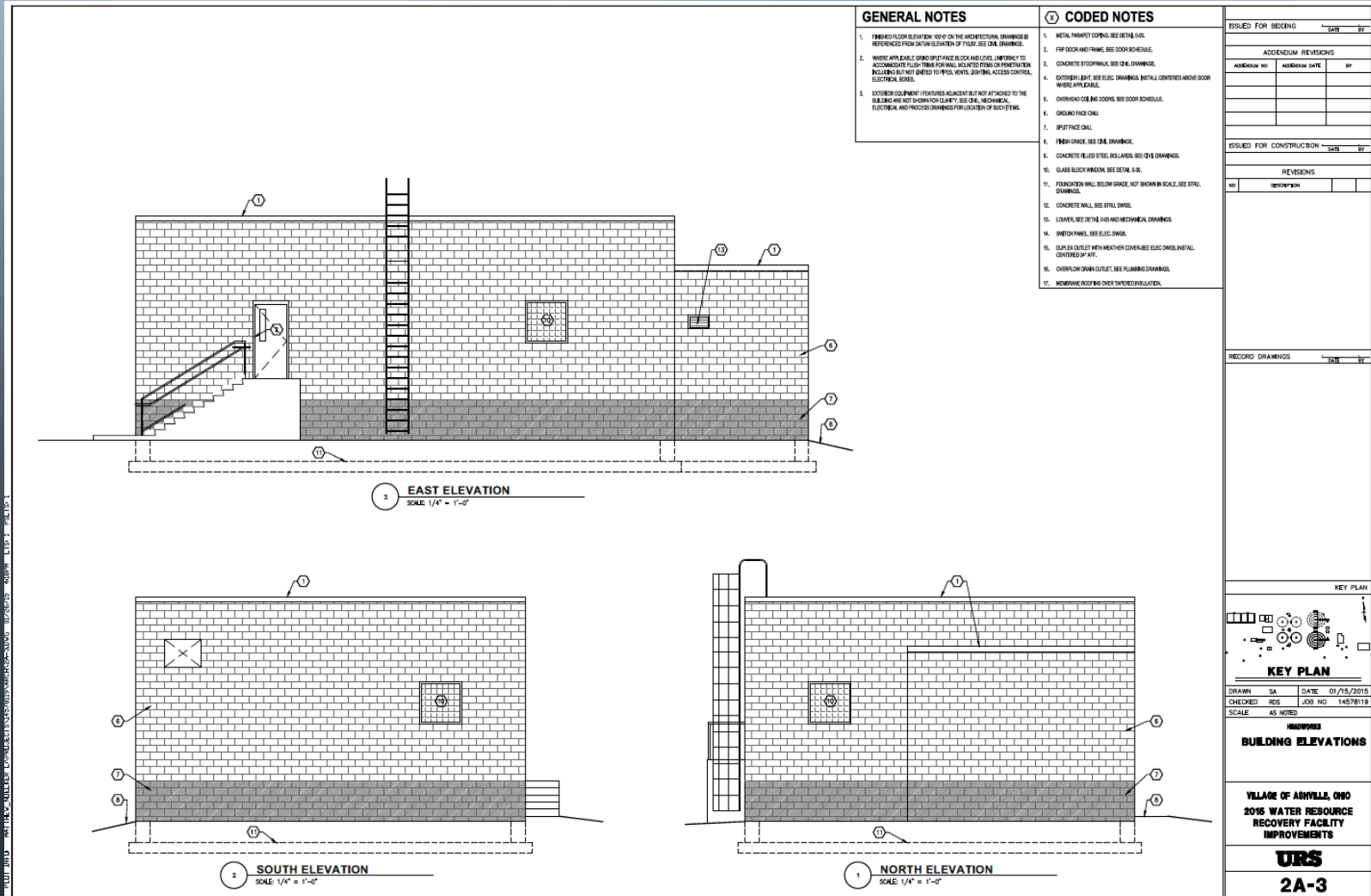
INDEX SHEET SURVEY CONTROL & LEGEND

VILLAGE OF ASHVILLE
SANITARY SEWER
IMPROVEMENTS
(PART B)

URS Corporation

Ashville's WRRF Project

Attachment 1



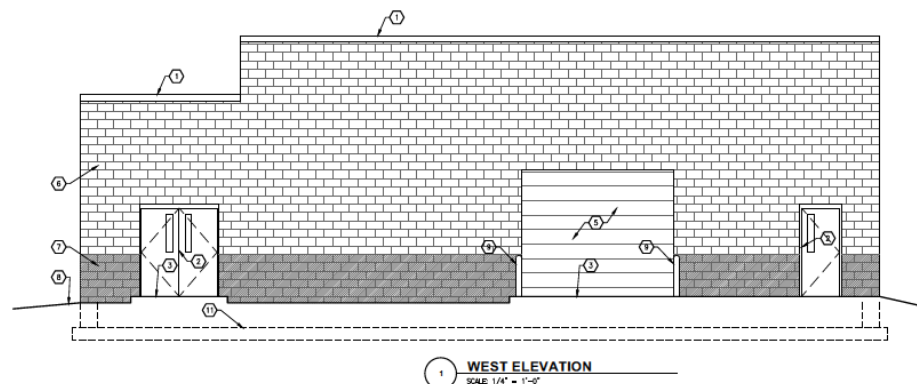
January 26, 2015

Ashville's WRRF Project

Attachment 1



PLUT INFO: MATTHEW ADLER L:\PROJECTS\2015\ASHVILLE\4-DWG_01/15/2015_409PM_LTD-1_PLOT-1



1 WEST ELEVATION
SCALE: 1/4" = 1'-0"

GENERAL NOTES

1. FINISHED FLOOR ELEVATION SHOWN ON THE ARCHITECTURAL DRAWINGS IS REFERENCED FROM DATUM ELEVATION OF 710.00'. SEE CIVIL DRAWINGS.
2. WHERE APPLICABLE, SPRING SPRAY FACE BLOCK AND LEV. UNIFORMITY TO ACCOMMODATE FLOOR FINISH FOR WALL AND CEILING FINISH OR PENETRATION INCLUDING BUT NOT LIMITED TO: PIPES, VENTS, LIFTING, ACCESS CONTROL, ELECTRICAL BOXES.
3. EXTERIOR LIGHT FIXTURES ADJACENT BUT NOT ATTACHED TO THE BUILDING ARE NOT SHOWN ON CLARITY. SEE CIVIL, MECHANICAL, ELECTRICAL AND PROCESS DRAWINGS FOR LOCATION OF SUCH ITEMS.

1 CODED NOTES

1. METAL PANTRY COILING. SEE DETAIL 5-6.
2. FAP DOOR AND FRAME. SEE DOOR SCHEDULE.
3. CONCRETE FLOOR FINISH. SEE CIVIL DRAWINGS.
4. EXTERIOR LIGHT. SEE ELEC. DRAWINGS. DETAIL CENTERED ABOVE DOOR WHERE APPLICABLE.
5. OVERHEAD DOOR. SEE DOOR SCHEDULE.
6. CONCRETE FLOOR FINISH. SEE DETAIL 5-6.
7. SPRAY FACE CHALK.
8. FINISH GRACE. SEE CIVIL DRAWINGS.
9. CONCRETE FLOOR FINISH. SEE CIVIL DRAWINGS.
10. GLASS BLOCK WINDOW. SEE DETAIL 5-6.
11. FOUNDATION WALL. SEE DETAIL 5-6.
12. CONCRETE WALL. SEE DETAIL 5-6.
13. LOUVER. SEE DETAIL 5-6 AND MECHANICAL DRAWINGS.
14. SWITCH PANEL. SEE ELEC. DRAWINGS.
15. OUTLET OUTLET WITH WEATHER COVER. SEE ELEC. DRAWINGS. DETAIL CENTERED AT TOP.
16. OVERFLOW DRAIN OUTLET. SEE PLUMBING DRAWINGS.
17. REMEMBRANCE ROOFING OVER EXTERIOR INSULATION.

ISSUED FOR BIDDING		DATE	BY
ADDENDUM REVISIONS			
ADDENDUM NO.	ADDENDUM DATE	BY	
ISSUED FOR CONSTRUCTION			
DATE	BY		
REVISIONS			
NO.	DESCRIPTION	DATE	BY
RECORD DRAWINGS			
DATE	BY		
KEY PLAN			
KEY PLAN			
DRAWN	SA	DATE	01/15/2015
CHECKED	ROS	JOB NO.	14578119
SCALE: AS NOTED			
IMPROVEMENTS BUILDING ELEVATION & SECTION			
VILLAGE OF ASHVILLE, OHIO 2015 WATER RESOURCE RECOVERY FACILITY IMPROVEMENTS			
URS 2A-4			

January 26, 2015

[illegible]

PLOT INFO MATTHEW ADLER, LVLING, ECTS, USG, HST, WARK, USA - LONG 02/06/2015 4:00PM LITS 1 PLOT 10.1

4 SOUTH ELEVATION
SCALE: 1/4" = 1'-0"

3 NORTH ELEVATION
SCALE: 1/4" = 1'-0"

2 EAST ELEVATION
SCALE: 1/4" = 1'-0"

1 WEST ELEVATION
SCALE: 1/4" = 1'-0"

GENERAL NOTES

- WHERE APPLICABLE GRIND SPILL-FACE BLOCK AND LEVEL UNIFORMLY TO ACCOMMODATE FLUSH TRIMS FOR WALL MOUNTED ITEMS OR PENETRATION INCLUDING BUT NOT LIMITED TO PIPES, VENTS, LIGHTING, ACCESS CONTROLS, ELECTRICAL, ETC.
- SEE SHEET 0-00 FOR WINDOW TYPES & DETAILS.
- EXTENDING GUTTERING / FLOORS ADJACENT BUT NOT ATTACHED TO THE BUILDING ARE NOT SHOWN FOR CLARITY. SEE CHAL, MECHANICAL, ELECTRICAL AND PROCESS DRAWINGS FOR LOCATION OF SUCH ITEMS. REFER TO SHEET 0-00 FOR APPROVED WALL PENETRATION DETAILS.

CODED NOTES

- 4" GROUND FACE CMU VENEER.
- 4" SPILL-FACE CMU VENEER- ACCENT COLOR.
- 4" SPILL-FACE CMU VENEER.
- WINDOW WITH INSULATED GLASS. SEE 10 & 11 ON 6A-5 FOR DETAILS.
- LOWER OPENING OR EXHAUST FAN- COORDINATE LOCATION AND SIZE OF ROUGH OPENING WITH HVAC & STRUCTURAL DRAWINGS. SEE DETAIL 12/6A-5.
- INSULATED & WEATHER SEALED EXTERIOR FRIP DOOR & FRAME. SEE DOOR SCHEDULE FOR DETAILS.
- CONCRETE PROST STOOP, WALK OR DRIVE APRON. COORDINATE WITH CHAL & STRUCTURAL DMS.
- OUTLINE OF FOUNDATION, SHOWN FOR REFERENCE ONLY, COORDINATE WITH STRUCT.
- BUILDING MOUNTED LIGHT FIXTURE. SEE ELEC DMS.
- FINISH GROUND. SEE CHAL DRAWINGS.
- CONCRETE FLOORING. SEE DOOR SCHEDULE FOR MORE INFORMATION.
- STEEL BOLLARD. CONCRETE FILLED AND PAINTED - SEE CHAL DMS FOR TYPICAL DETAIL.
- ALUMINUM GUTTER AND DOWNSPOUT.
- RECE VENT - REF. ROOF PLAN & DETAIL 3/6A-1.
- STANDING SEAM METAL ROOF.
- VENT THROUGH ROOF- SEE VENTING DMS.
- CONTINUOUS SHOWCASE BAR WITH COLOR INSERT ON EACH SLAT. SEE 14" ON THE LATEST POINT OF THE BODY.
- MECHANICAL SHUT PENETRATION AT THE EXTERIOR WALL. SEE DETAIL 3/6A-4. COORDINATE WITH MECHANICAL CONTRACTOR.

KEY PLAN

ADMINISTRATIVE BUILDING
BUILDING ELEVATIONS

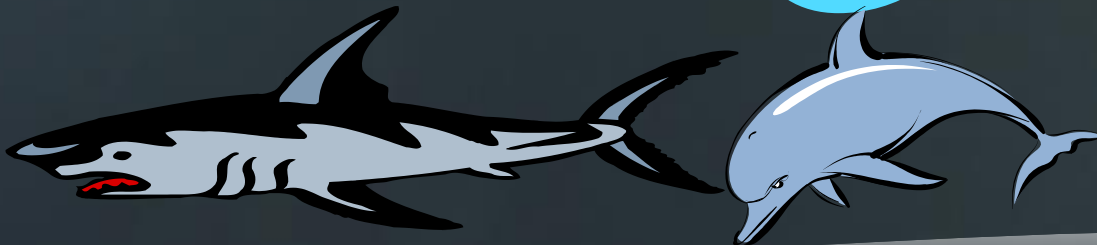
VILLAGE OF ASHVILLE, OHIO
2015 WATER RESOURCE
RECOVERY FACILITY
IMPROVEMENTS

URS
10A-4

January 26, 2015

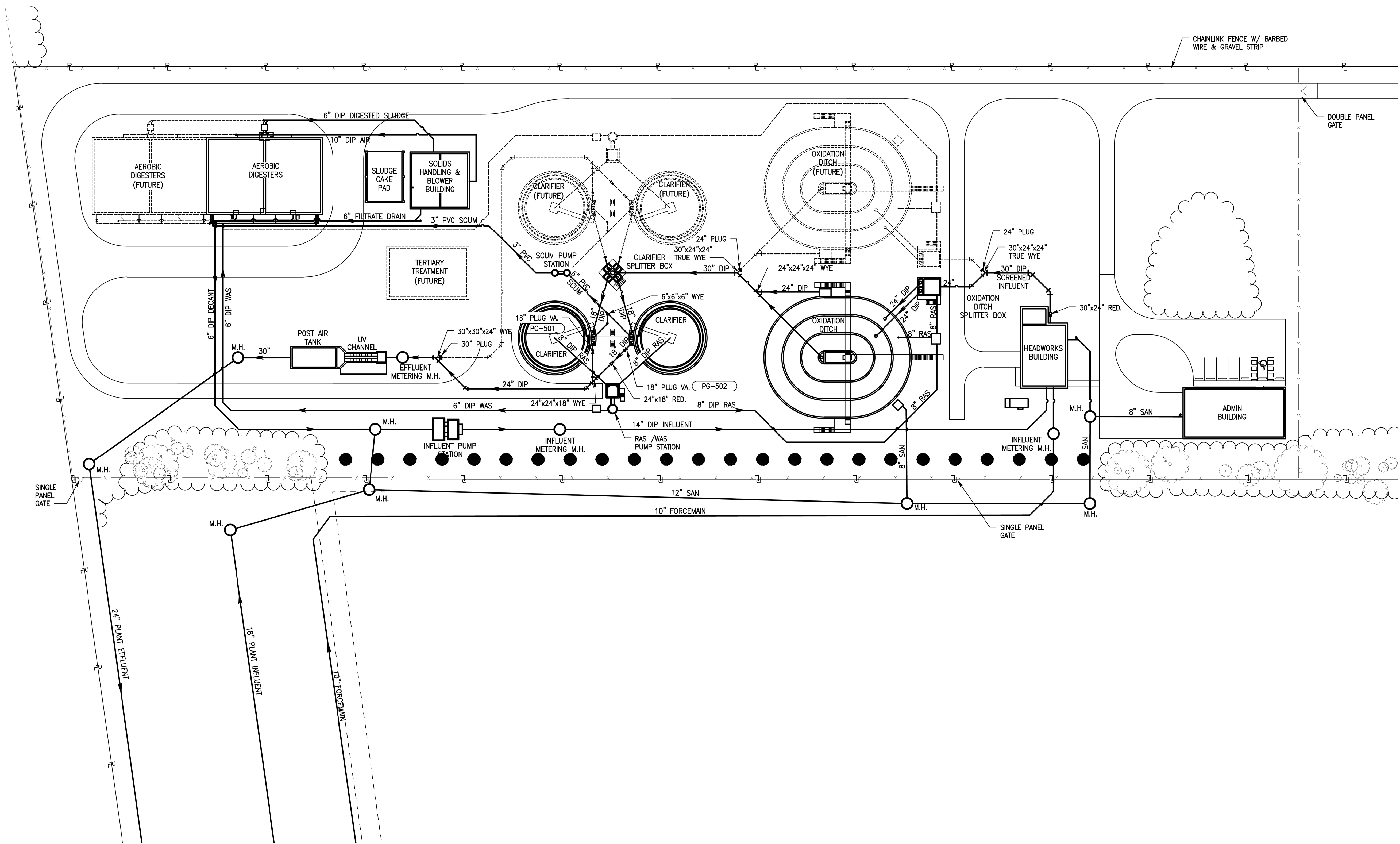


Thank You



August 4, 2014

Attachment One



ISSUED FOR BIDDING		DATE		BY	
ADDENDUM REVISIONS					
ADDENDUM NO	ADDENDUM DATE		BY		
ISSUED FOR CONSTRUCTION					
DATE		BY			
REVISIONS					
NO	DESCRIPTION				
RECORD DRAWINGS					
DATE		BY			
KEY PLAN					
DRAWN		JDMc	DATE		01/15/2015
CHECKED		MSN	JOB NO		14578119
SCALE		1" = 40'			
PROPOSED YARD PIPING					
VILLAGE OF ASHVILLE, OHIO 2014 WATER RESOURCE RECOVERY FACILITY IMPROVEMENTS					
URS					
SW-3					