



**FY21 – PROJECT PHOTO GALLERY**

PROJECT NAME:

PIC-SR 316/752-13.05/0.000

PID: 107824

County:

Route:

SECTION:

PIC

316

13.05-13.68

**1. PROJECT IDENTIFICATION:**

PIC-SR 316 – 13.05-13.68 Functional Class: 05 – Major Collector (Rural)

- Old CB & new CB in front of Ashville Cleaning Center (start of resurfacing project)



- #4 drainage location:
  - North of Cherry Street, on the east side of the roadway



- #6 drainage location:
  - North of Cherry Street, on the west side
  - In the sidewalk/driveway next to houses



- #8 drainage location:
  - North of Plum Street, on the east side of the roadway



- #10 & 11 drainage locations:
  - In between Madison Street & Church Street, on the East side of the roadway



- #15 drainage location:
  - SR-316W & Long Street, on the West side of the roadway (corner)



- #17 drainage location:
  - SR-316W in the middle of the roadway



- #18 drainage location:
  - Once you turn onto SR-316W
- #19 drainage location:
  - Catch basin in an alley on the West side of the roadway



# Ashville, ODOT, & OPWC State Route 316 Project Attachment 1 Continued

- #20 drainage location:
  - In between the RR crossings on the east side of the roadway
- #21 drainage location:
  - In between the RR crossings on the west side on the roadway



- #22 drainage location:
  - In between the RR crossings on the east side of the roadway located by the sistirn



# Ashville, ODOT, & OPWC State Route 316 Project Attachment 1 Continued

- #23 & 24 drainage locations:
  - At Cromley Street, on the East side of the roadway
- Curb built on top of curb – south of Cromley Street



- #25 drainage location:
  - In between Cromley Street and Scioto Street

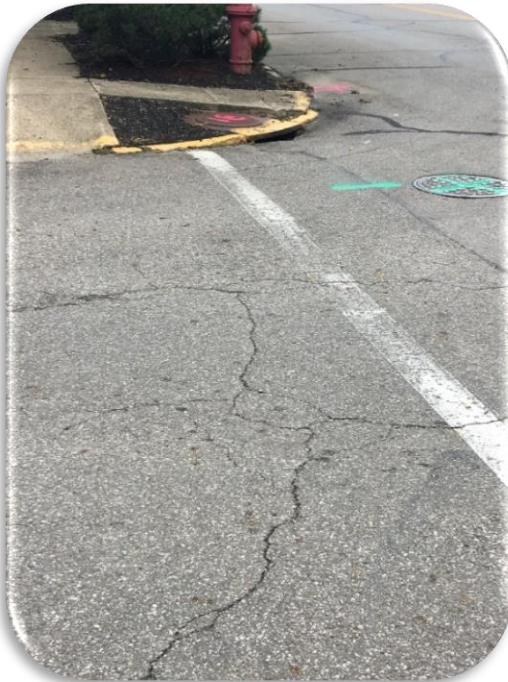


# Ashville, ODOT, & OPWC State Route 316 Project Attachment 1 Continued

- #26 drainage location:
  - Southeast corner of Scioto Street intersection
- #27 & 28 drainage locations:
  - Northeast corner of Scioto Street Intersection



- #32 drainage location:
  - Under the RR on the east side of SR-316
  - This is past what we will resurface with the future project





## Ashville, ODOT, & OPWC State Route 316 Project Attachment 1 Continued

- #33 drainage location:
  - Under the RR on the west side of SR-316
  - This is past what we will resurface with the future project
- #34 drainage location:
  - Down center alley



- #35 drainage location:
  - Down center alley



- #36 drainage location:
  - Down center alley
- #38 core location:
  - On Madison Avenue on the left side (heading toward SR-316)
  - #37 drainage location:
    - On Madison Avenue on the right side (heading toward SR-316)



- #38 drainage location:
  - On Madison Avenue on the left side (heading toward SR-316)



**SR-316 – Drainage Field Review**

**11/15/2017 – Jon Adams, Nick Villaveces & Grace Wesner**

**Jefferson Avenue:**

- One 4'x4' depressed apron (shown in the photo below)





**Scioto Street:**

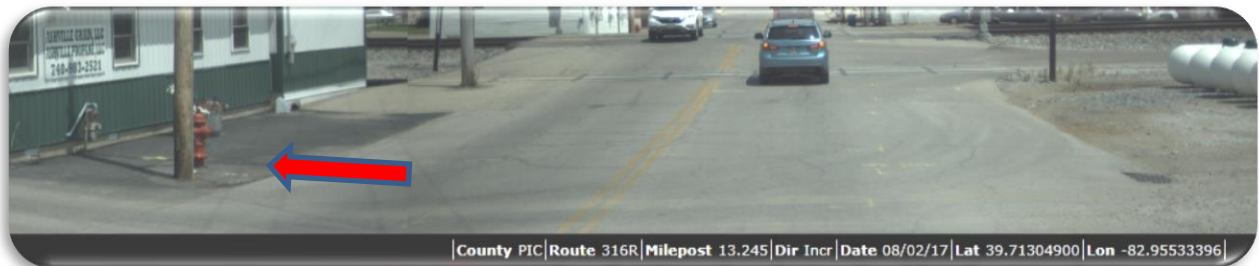
- 4'x4' depressed apron in the following locations:
  - o 1 in the NE corner
  - o 1 in the SW corner
- One 5' wide x 3' long depressed apron in the SE corner
- See photo below:





**In between RR Tracks - ~SLM 13.25:**

- Replace with a CB 6 (see photo below)
  - o This is on the North side of the road (right in front of Ashville Grain, LLC)



**In alley at ~SLM 13.305:**

- Adjust CB to grade (see photo below)



**Main Street/Long Street Intersection (where SR-316 turns):**

- Two 4'x4' depressed aprons
  - o 1 in the NW corner
  - o 1 in the NE corner



**Wright Street:**

- Propose putting a 3A CB in the location on the photo shown below
  - o There is no other drainage at this intersection
- The Village has tried to grind here
  - o If we do more there will be a lip at both curb ramps





**Church Street:**

- One 4'x4' depressed apron in the SE corner
  - o Can't grind anymore here unless we recommend replacing the curb ramp → there is already a lip
- It would be ideal to install a CB 3A on the South side of Church street (it is the low point)
  - o This isn't our street, what do we do here?





# Ashville, ODOT, & OPWC State Route 316 Project Attachment 1 Continued

## Between Church Street and Madison Ave - ~SLM 13.45:

- Add 4'x4' depressed aprons at all 3 CB's shown in the photo below
  - o Replace the CB on the West side with a CB 3A



## Plum Street:

- One 4'x4' depressed apron (shown in the photo below)
- Suggested installing a CB 3A on Plum Street in the location shown in the second photo below





**Cherry Street**

- Three 4'x4' depressed aprons are needed in the locations shown
- Need a CB 6 in the SE corner of the intersection (shown in the second photo below)
- 18' wide lanes in this location
- 6" wide openings at CB's



**Harrison Street:**

- Replace with a 3A CB (use the standard apron detail)
  - o Location shown in the photo below
- Grind 6' around the radius from crosswalk to CB



Grace Wesner  
Transportation Engineer 2  
ODOT District 6, 400 E. William Street, Delaware, Ohio 43015  
Phone: 740.833.8160  
[Grace.Wesner@dot.ohio.gov](mailto:Grace.Wesner@dot.ohio.gov)



# Ashville, ODOT, & OPWC State Route 316 Project Attachment 1 Continued

FRA-71-5.29, PID 84868 - Core Plan

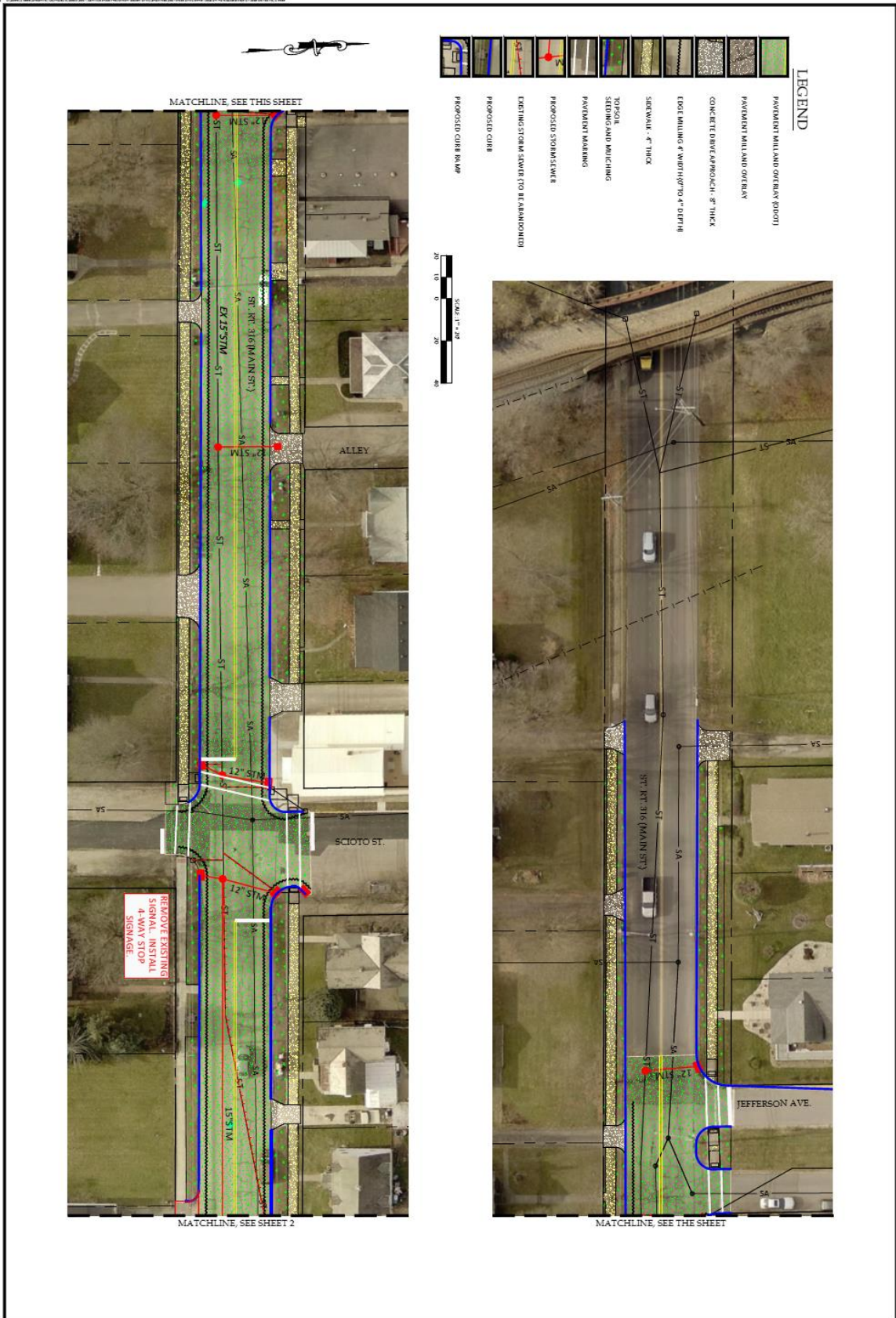
SR - 316 - LONG STREET

SR - 316 - MAIN STREET

SR - 316 - LONG STREET

CORE #	DIR	ROUTE	AsBuild Core SLM	DEPTH to	DEPTH	Depth of Aggregate per Plan	Offset	Notes
				MacAdam	Aggregate			
1	WB	316	13.65		hole - 7.5" asphalt - 5"		right wheel path	can't mill off 3" here, no brick max 3.5" to bad asphalt
2	WB	316	13.65		hole - 7.5" asphalt - 4.5"		left of the continuous longitudinal crack	penetration macadam is the base good material, do not want to disturb
3	WB	316	13.59		hole - 5.5" asphalt - 3"		crown	waterbound macadam - good material structurally
4	WB	316	13.55		hole - 10" asphalt - 4.5"		shoulder/right wheel path - across from Cherry Street	good asphalt concrete under, not sure if it is a gutter
5	WB	316	13.55		hole - 8" asphalt - 5.5"		right wheel path - possible old waterline cut	asphalt and penetration macadam
6	WB	316	13.52		hole - 7" asphalt - 3"		left of the continuous longitudinal crack	asphalt with waterbound macadam
7	WB	316	13.45		hole - 5.5" asphalt - 3"		shoulder/right wheel path - near Church Street	asphalt with waterbound macadam
8	WB	316	13.4		hole - 7.5" asphalt - 5"		right of the continuous longitudinal crack	asphalt with waterbound macadam - different than the trend - still good material
9	WB	316	13.4		hole - 6" asphalt - 3"		left of the continuous longitudinal crack	asphalt on top of possible delaminated asphalt base
10	WB	316	13.36		hole - 5" asphalt - 3"		crown - just before SR-316 turns onto Main Street	3" of asphalt on top of penetration macadam
11	WB	316	13.31		hole - 5" asphalt - 5"		left of the longitudinal crack	5" of asphalt on top of brick
12	WB	316	13.31		hole - 5" asphalt - 5"		right of the longitudinal crack	5" of asphalt on top of brick
13	WB	316	13.23		hole - 4" asphalt - 4"		crown - just past all of the RR tracks	4" of asphalt on top of brick
14	WB	316	13.19		hole - 6" asphalt - 6"		near edge of pavement	6" of asphalt on top of brick
15	WB	316	13.11		hole - 5" asphalt - 5"		right wheel path	5" of asphalt on top of brick
16	WB	316	13.09		hole - 5.5" asphalt - 5.5"		crown	5.5" of asphalt on top of brick
17	EB	316	13.07		hole - 4" asphalt - 4"		near edge of pavement/right wheel path	4" of asphalt on top of brick
18	EB	316	13.15		hole - 9" asphalt - 5"		crown	asphalt on brick
19	EB	316	13.25		hole - 11.5" asphalt - 7"		left wheel path	7" of asphalt on brick
20	EB	316	13.36		hole - 8" asphalt - 8"		next to curb	asphalt on top of concrete
21	EB	316	13.46		hole - 6.5" asphalt - 3"		right of longitudinal crack	3" of asphalt on some base material - possibly macadam - do not want to disturb this
22	EB	316	13.46		hole - 6.5" asphalt - 3"		left of longitudinal crack	3" of asphalt - very thin
23	EB	316	13.57		hole - 7.5" asphalt - 3.5"		right of longitudinal crack	asphalt on top of penetrating macadam (possibly)
24	EB	316	13.65		hole - 7.5" asphalt - 3"		left of longitudinal crack	3" of asphalt on some sort of base

\*The proposed core locations are marker with lath that has orange ribbon  
\*The SLM range for inside shoulder buildup are marked with lath that has white ribbon



**LEGEND**

- PAVED MILL AND OR BLVD (DOT)
- PAVED MILL AND OR BLVD
- CONCRETE DRIVE APPROACH, 8" THICK
- EDGE MILLING 4" WIDTH (7'0" & DEPTH)
- SEED BANK, 4" THICK
- TOPSOIL
- SEEDING AND MULCHING
- PAVED MARKINGS
- PROPOSED SIGNAGE
- EXISTING STORM SEWER (10" DIAMETER)
- PROPOSED CURB
- PROPOSED CURB ROAD

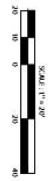
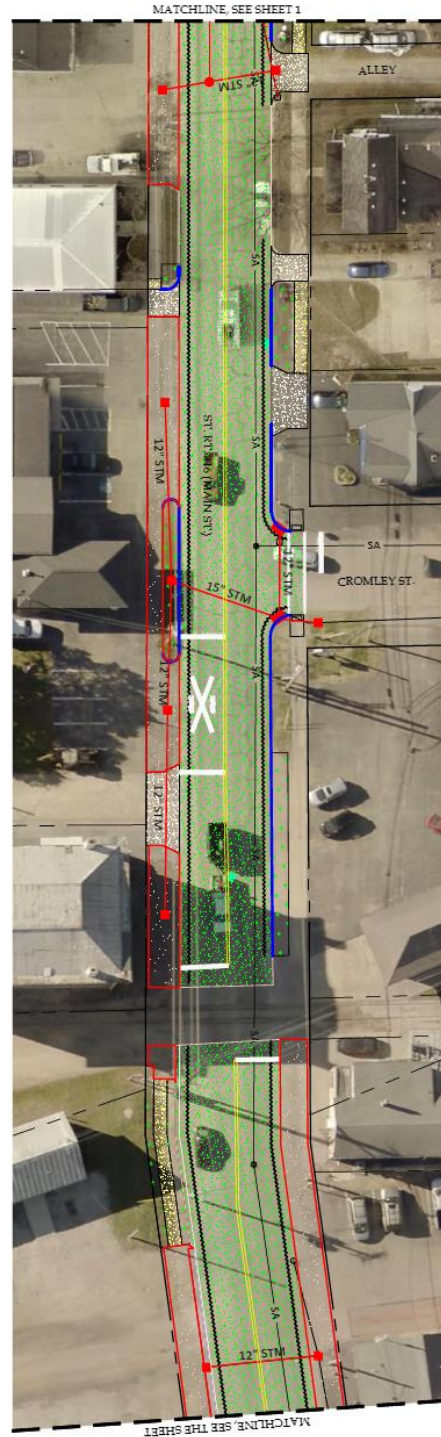


NO.	DATE	BY	CHKD.
1	08/21/2023	JM	JM
2	08/21/2023	JM	JM
3	08/21/2023	JM	JM
4	08/21/2023	JM	JM
5	08/21/2023	JM	JM
6	08/21/2023	JM	JM
7	08/21/2023	JM	JM
8	08/21/2023	JM	JM
9	08/21/2023	JM	JM
10	08/21/2023	JM	JM
11	08/21/2023	JM	JM
12	08/21/2023	JM	JM
13	08/21/2023	JM	JM
14	08/21/2023	JM	JM
15	08/21/2023	JM	JM
16	08/21/2023	JM	JM
17	08/21/2023	JM	JM
18	08/21/2023	JM	JM
19	08/21/2023	JM	JM
20	08/21/2023	JM	JM

EXHIBIT  
 SR 316 RECONSTRUCTION \ OPWC  
 MAIN STREET AND LONG STREET  
 ASHVILLE, OHIO

**TEBBE CIVIL ENGINEERING, LLC**

5700 Gremlin Court  
 Dublin, Ohio 43016  
 Phone (614) 704-5458 • [www.TebbeCivil.com](http://www.TebbeCivil.com)



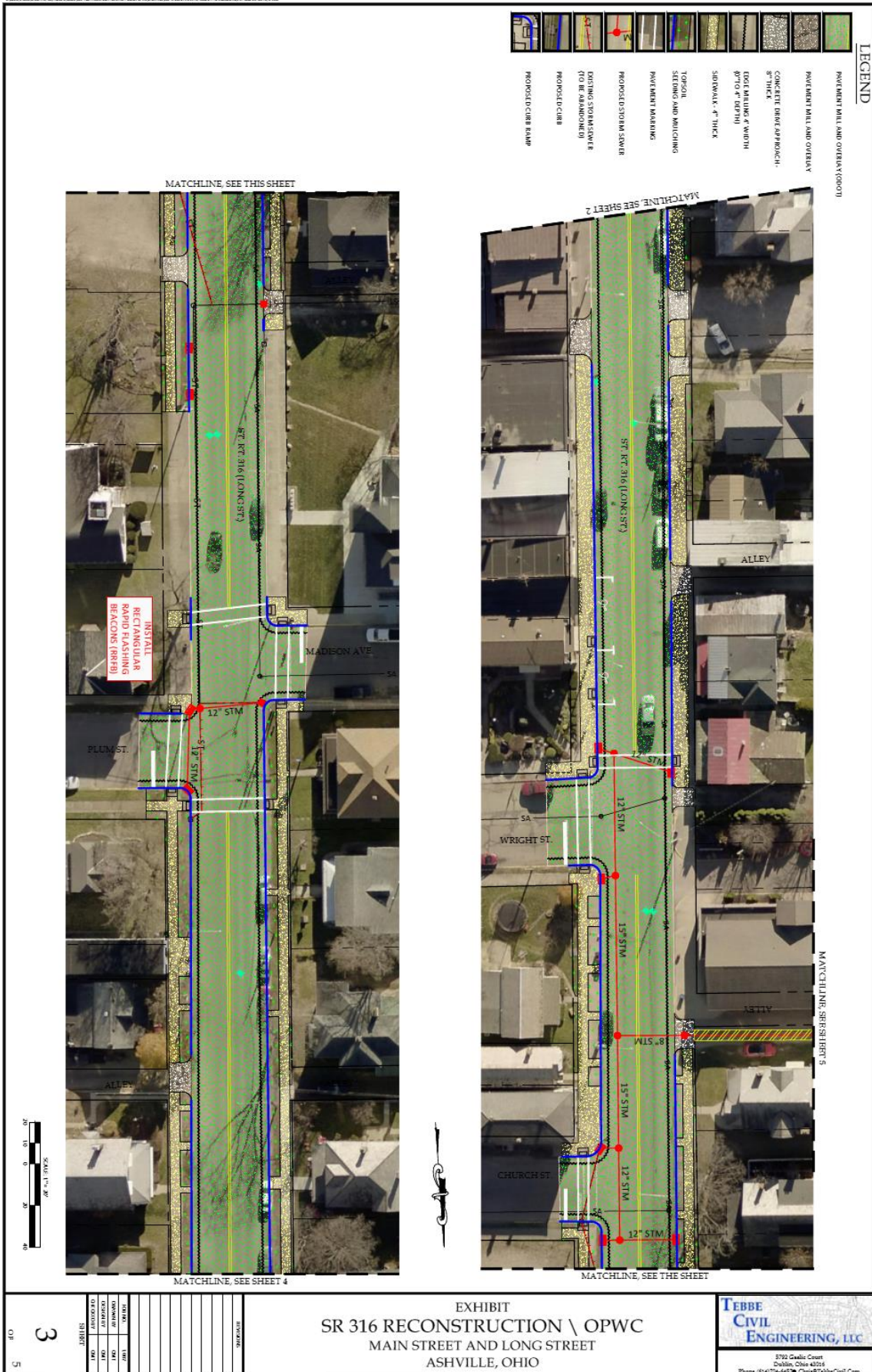
**LEGEND**

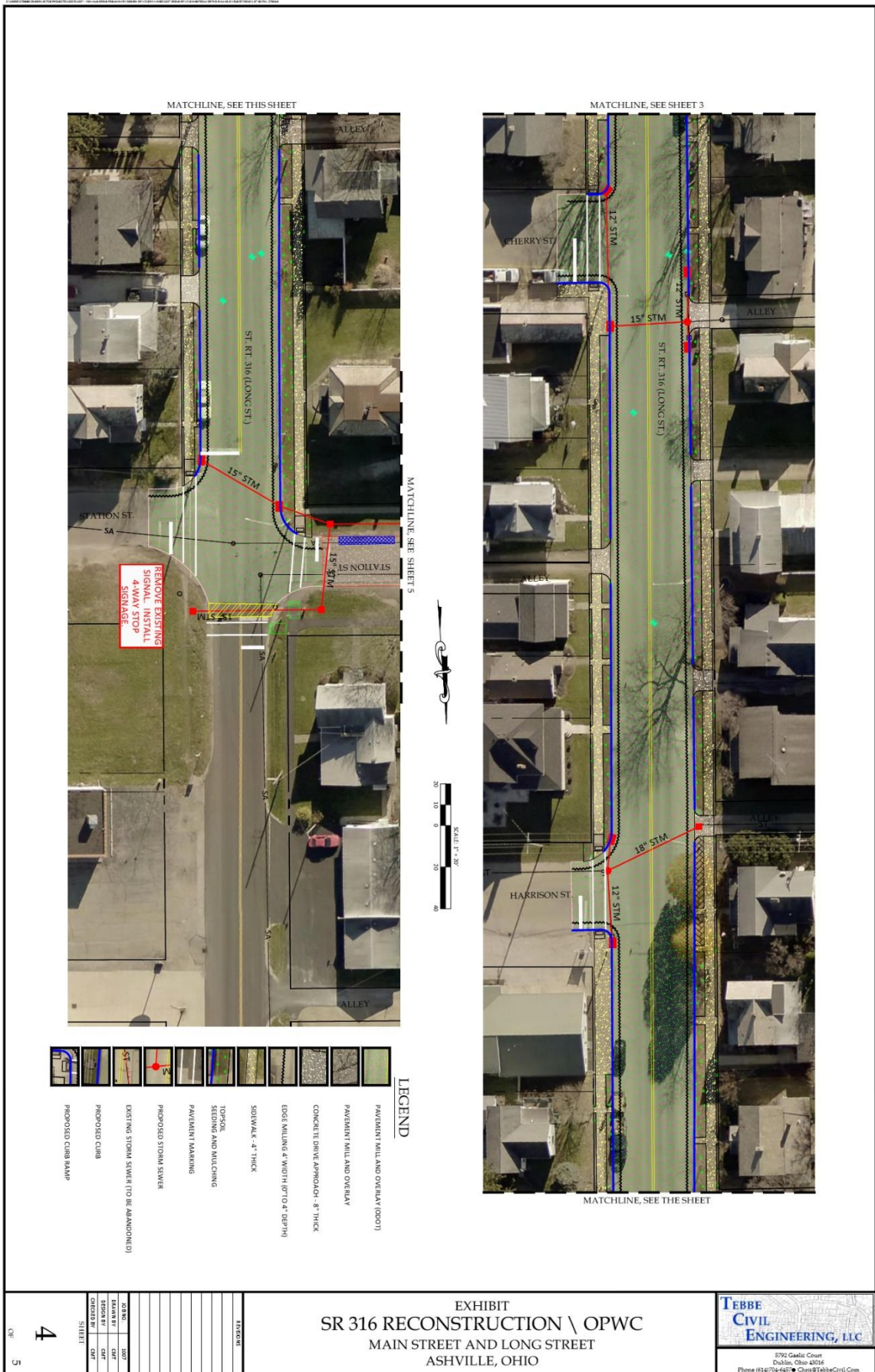
	PAVEMENT MILL AND OVERLAY (1000)
	PAVEMENT MILL AND OVERLAY
	CONCRETE DRIVE APPROACH - 8" THICK
	EDGE MILLING 4" WIDTH @ 10' @ 4" DEPTH
	SIGNAL - 4" THICK
	TOPSOIL SEEDING AND MULCHING
	PAVEMENT MARKINGS
	PROPOSED SIGNAL SIGN
	EXISTING SIGNAL STRUCTURE TO BE RETAINED
	PROPOSED CURB
	PROPOSED CURB RAMP

NO.	DATE	BY	CHKD.

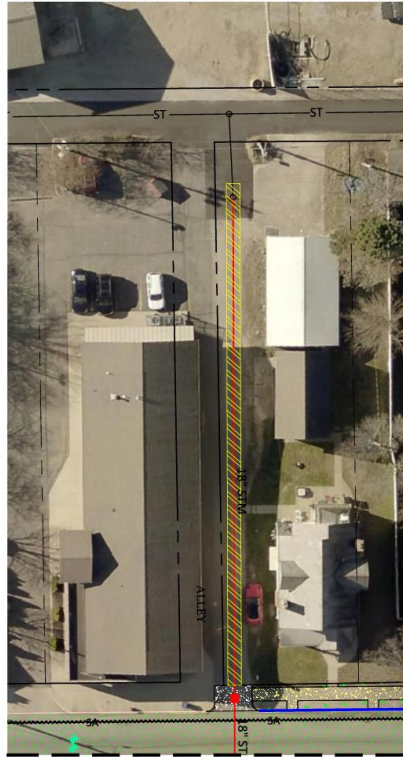
EXHIBIT  
 SR 316 RECONSTRUCTION \ OPWC  
 MAIN STREET AND LONG STREET  
 ASHVILLE, OHIO

**TEBBE CIVIL ENGINEERING, LLC**  
 5792 Cavell Court  
 Dayton, Ohio 45424  
 Phone (513) 794-4476 Fax (513) 794-4476 Email Tebbe@TebbeCivil.com

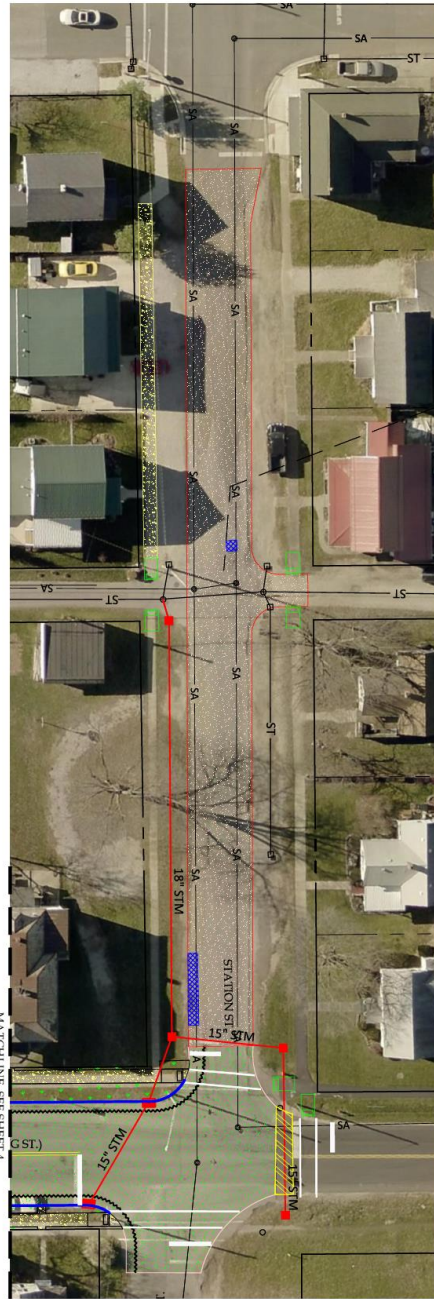




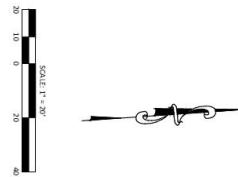




MATCHLINE, SEE SHEET 3



MATCHLINE, SEE SHEET 4



- LEGEND**
- PAVEMENT MILL AND OVERLAY (OOOT)
  - PAVEMENT MILL AND OVERLAY
  - CONCRETE DRIVE APPROACH - 8" THICK
  - EDGE MILLING - 4" WIDTH (TO 4" DEPTH)
  - SIDEWALK - 4" THICK
  - TOPSOIL SPREADING AND MULCHING
  - PAVEMENT MARKING
  - PROPOSED STORM SEWER
  - EXISTING STORM SEWER (TO BE ABANDONED)
  - PROPOSED CURB
  - PROPOSED CURB RAMP

NO.	DATE	BY	REVISION
1	08/11/2011	CMT	ISSUED FOR PERMIT
2	08/11/2011	CMT	ISSUED FOR PERMIT
3	08/11/2011	CMT	ISSUED FOR PERMIT
4	08/11/2011	CMT	ISSUED FOR PERMIT
5	08/11/2011	CMT	ISSUED FOR PERMIT

EXHIBIT  
 SR 316 RECONSTRUCTION \ OPWC  
 MAIN STREET AND LONG STREET  
 CMT

**TEBBE CIVIL ENGINEERING, LLC**  
 8792 Gaelic Court  
 Dublin, Ohio 43016  
 Phone (614) 706-6467 • Chris@TebbeCivil.com