

FY21 – PROJECT PHOTO GALLERY

PROJECT NAME:

PIC-SR 316/752-13.05/0.000

PID: 107824

County:

Route:

SECTION:

PIC

316

13.05-13.68

1. PROJECT IDENTIFICATION:

PIC-SR 316 – 13.05-13.68 Functional Class: 05 – Major Collector (Rural)

- Old CB & new CB in front of Ashville Cleaning Center (start of resurfacing project)



- #4 drainage location:
 - North of Cherry Street, on the east side of the roadway



- #6 drainage location:
 - North of Cherry Street, on the west side
 - In the sidewalk/driveway next to houses



- #8 drainage location:
 - North of Plum Street, on the east side of the roadway



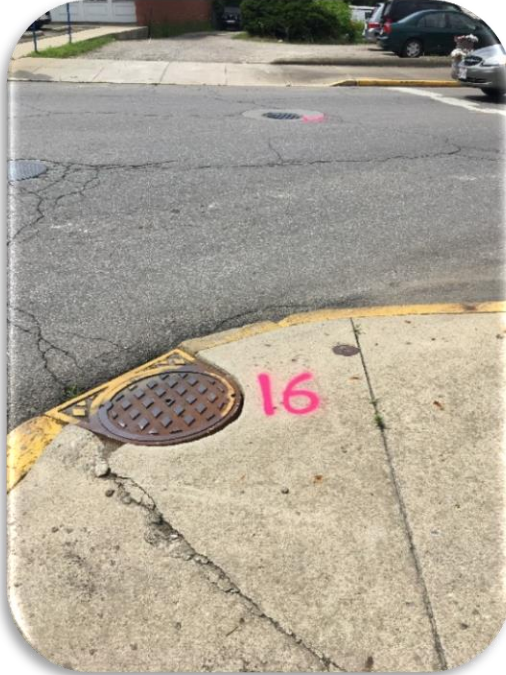
- #10 & 11 drainage locations:
 - In between Madison Street & Church Street, on the East side of the roadway



- #15 drainage location:
 - SR-316W & Long Street, on the West side of the roadway (corner)



- #17 drainage location:
 - SR-316W in the middle of the roadway



- #18 drainage location:
 - Once you turn onto SR-316W
- #19 drainage location:
 - Catch basin in an alley on the West side of the roadway



- #20 drainage location:
 - In between the RR crossings on the east side of the roadway
- #21 drainage location:
 - In between the RR crossings on the west side on the roadway



- #22 drainage location:
 - In between the RR crossings on the east side of the roadway located by the sistirn



- #23 & 24 drainage locations:
 - At Cromley Street, on the East side of the roadway
- Curb built on top of curb – south of Cromley Street



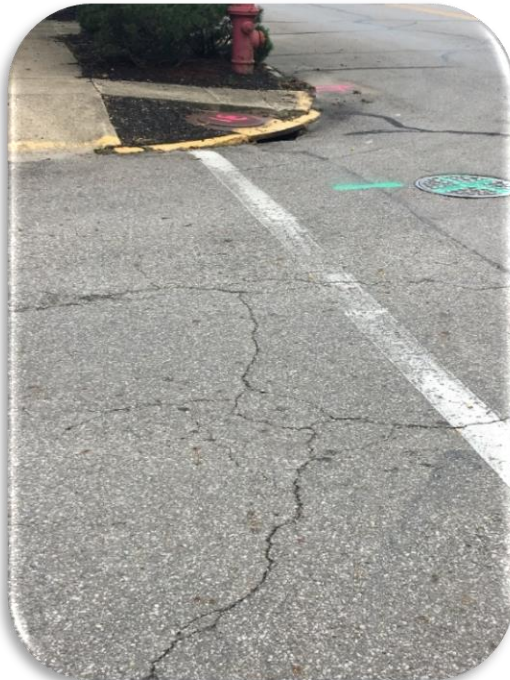
- #25 drainage location:
 - In between Cromley Street and Scioto Street



- #26 drainage location:
 - Southeast corner of Scioto Street intersection
- #27 & 28 drainage locations:
 - Northeast corner of Scioto Street Intersection



- #32 drainage location:
 - Under the RR on the east side of SR-316
 - This is past what we will resurface with the future project



- #33 drainage location:
 - Under the RR on the west side of SR-316
 - This is past what we will resurface with the future project
- #34 drainage location:
 - Down center alley



- #35 drainage location:
 - Down center alley



- #36 drainage location:
 - Down center alley
- #38 core location:
 - On Madison Avenue on the left side (heading toward SR-316)
 - #37 drainage location:
 - On Madison Avenue on the right side (heading toward SR-316)



- #38 drainage location:
 - On Madison Avenue on the left side (heading toward SR-316)



SR-316 – Drainage Field Review

11/15/2017 – Jon Adams, Nick Villaveces & Grace Wesner

Jefferson Avenue:

- One 4'x4' depressed apron (shown in the photo below)





Scioto Street:

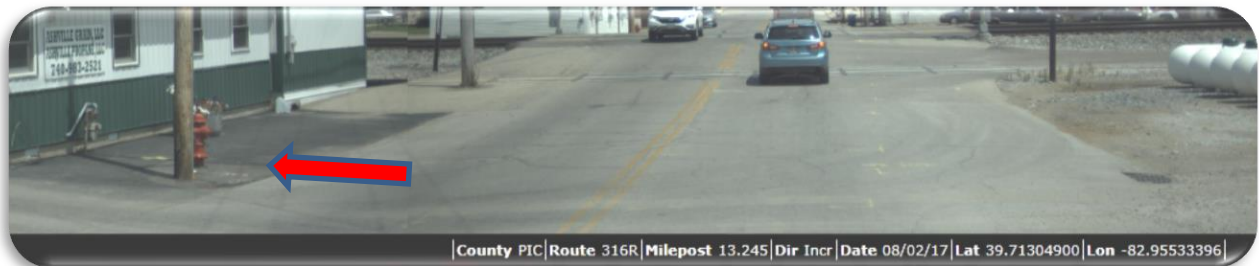
- 4'x4' depressed apron in the following locations:
 - o 1 in the NE corner
 - o 1 in the SW corner
- One 5' wide x 3' long depressed apron in the SE corner
- See photo below:





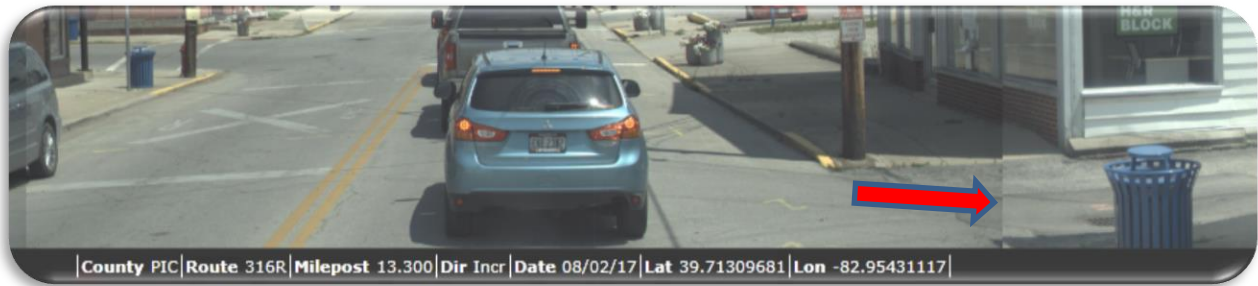
In between RR Tracks - ~SLM 13.25:

- Replace with a CB 6 (see photo below)
 - o This is on the North side of the road (right in front of Ashville Grain, LLC)



In alley at ~SLM 13.305:

- Adjust CB to grade (see photo below)



Main Street/Long Street Intersection (where SR-316 turns):

- Two 4'x4' depressed aprons
 - o 1 in the NW corner
 - o 1 in the NE corner



Wright Street:

- Propose putting a 3A CB in the location on the photo shown below
 - o There is no other drainage at this intersection
- The Village has tried to grind here
 - o If we do more there will be a lip at both curb ramps





Church Street:

- One 4'x4' depressed apron in the SE corner
 - o Can't grind anymore here unless we recommend replacing the curb ramp → there is already a lip
- It would be ideal to install a CB 3A on the South side of Church street (it is the low point)
 - o This isn't our street, what do we do here?



Between Church Street and Madison Ave - ~SLM 13.45:

- Add 4'x4' depressed aprons at all 3 CB's shown in the photo below
 - o Replace the CB on the West side with a CB 3A



Plum Street:

- One 4'x4' depressed apron (shown in the photo below)
- Suggested installing a CB 3A on Plum Street in the location shown in the second photo below





Cherry Street

- Three 4'x4' depressed aprons are needed in the locations shown
- Need a CB 6 in the SE corner of the intersection (shown in the second photo below)
- 18' wide lanes in this location
- 6" wide openings at CB's



Harrison Street:

- Replace with a 3A CB (use the standard apron detail)
 - o Location shown in the photo below
- Grind 6' around the radius from crosswalk to CB



Grace Wesner
Transportation Engineer 2
ODOT District 6, 400 E. William Street, Delaware, Ohio 43015
Phone: 740.833.8160
Grace.Wesner@dot.ohio.gov



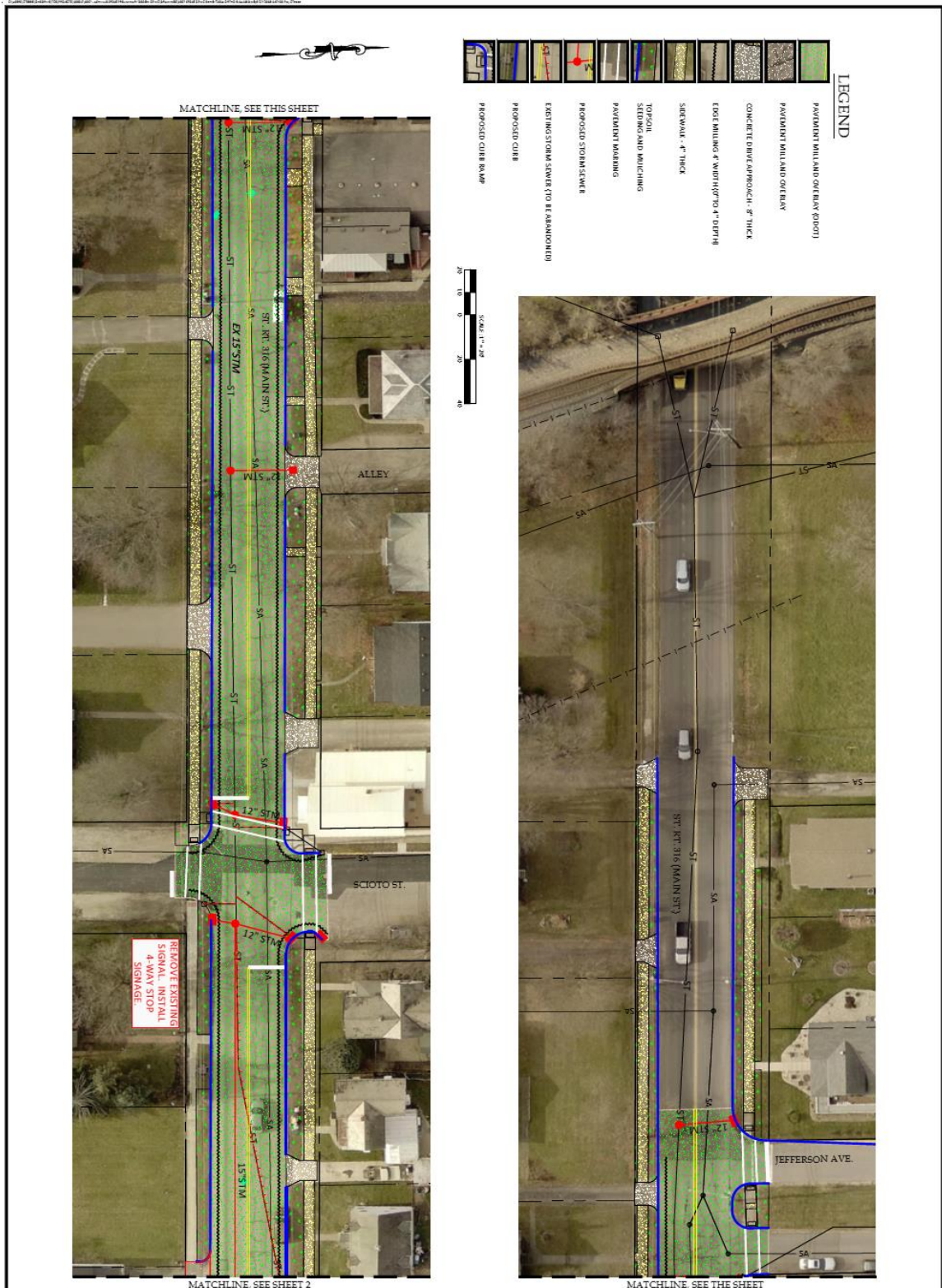
SR - 316 - LONG STREET

SR - 316 - MAIN STREET

SR - 316 - LONG STREET

CORE #	DIR	ROUTE	AsBuild Core SLM	DEPTH to	DEPTH	Depth of Aggregate per Plan	Offset	Notes
				MacAdam	Aggregate			
1	WB	316	13.65		hole - 7.5" asphalt - 5"		right wheel path	can't mill off 3" here, no brick max 3.5" to bad asphalt
2	WB	316	13.65		hole - 7.5" asphalt - 4.5"		left of the continuous longitudinal crack	penetration macadam is the base good material, do not want to disturb
3	WB	316	13.59		hole - 5.5" asphalt - 3"		crown	waterbound macadam - good material structurally
4	WB	316	13.55		hole - 10" asphalt - 4.5"		shoulder/right wheel path - across from Cherry Street	good asphalt concrete under, not sure if it is a gutter
5	WB	316	13.55		hole - 8" asphalt - 5.5"		right wheel path - possible old waterline cut	asphalt and penetration macadam
6	WB	316	13.52		hole - 7" asphalt - 3"		left of the continuous longitudinal crack	asphalt with waterbound macadam
7	WB	316	13.45		hole - 5.5" asphalt - 3"		shoulder/right wheel path - near Church Street	asphalt with waterbound macadam
8	WB	316	13.4		hole - 7.5" asphalt - 5"		right of the continuous longitudinal crack	asphalt with waterbound macadam - different than the trend - still good material
9	WB	316	13.4		hole - 6" asphalt - 3"		left of the continuous longitudinal crack	asphalt on top of possible delaminated asphalt base
10	WB	316	13.36		hole - 5" asphalt - 3"		crown - just before SR-316 turns onto Main Street	3" of asphalt on top of penetration macadam
11	WB	316	13.31		hole - 5" asphalt - 5"		left of the longitudinal crack	5" of asphalt on top of brick
12	WB	316	13.31		hole - 5" asphalt - 5"		right of the longitudinal crack	5" of asphalt on top of brick
13	WB	316	13.23		hole - 4" asphalt - 4"		crown - just past all of the RR tracks	4" of asphalt on top of brick
14	WB	316	13.19		hole - 6" asphalt - 6"		near edge of pavement	6" of asphalt on top of brick
15	WB	316	13.11		hole - 5" asphalt - 5"		right wheel path	5" of asphalt on top of brick
16	WB	316	13.09		hole - 5.5" asphalt - 5.5"		crown	5.5" of asphalt on top of brick
17	EB	316	13.07		hole - 4" asphalt - 4"		near edge of pavement/right wheel path	4" of asphalt on top of brick
18	EB	316	13.15		hole - 9" asphalt - 5"		crown	asphalt on brick
19	EB	316	13.25		hole - 11.5" asphalt - 7"		left wheel path	7" of asphalt on brick
20	EB	316	13.36		hole - 8" asphalt - 8"		next to curb	asphalt on top of concrete
21	EB	316	13.46		hole - 6.5" asphalt - 3"		right of longitudinal crack	3" of asphalt on some base material - possibly macadam - do not want to disturb this
22	EB	316	13.46		hole - 6.5" asphalt - 3"		left of longitudinal crack	3" of asphalt - very thin
23	EB	316	13.57		hole - 7.5" asphalt - 3.5"		right of longitudinal crack	asphalt on top of penetrating macadam (possibly)
24	EB	316	13.65		hole - 7.5" asphalt - 3"		left of longitudinal crack	3" of asphalt on some sort of base

*The proposed core locations are marker with lath that has orange ribbon
 *The SLM range for inside shoulder buildup are marked with lath that has white ribbon



A Larger 11 X 14 Exhibit is available in the Original Tab

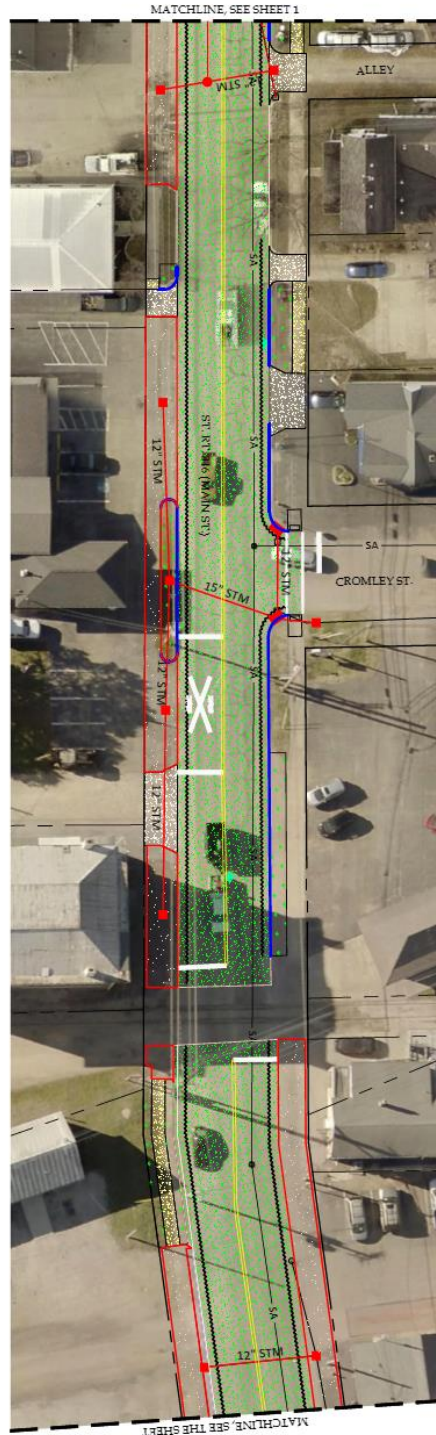
NO.	DATE	BY	CHKD.
1			
2			
3			
4			
5			
6			
7			
8			
9			
10			
11			
12			
13			
14			
15			
16			
17			
18			
19			
20			
21			
22			
23			
24			
25			
26			
27			
28			
29			
30			
31			
32			
33			
34			
35			
36			
37			
38			
39			
40			
41			
42			
43			
44			
45			
46			
47			
48			
49			
50			

EXHIBIT
 SR 316 RECONSTRUCTION \ OPWC
 MAIN STREET AND LONG STREET
 ASHVILLE, OHIO

TEBBE CIVIL ENGINEERING, LLC

5700 Creative Court
 Dublin, Ohio 43016
 Phone (614) 766-5458 • Fax (614) 766-5459

A Larger 11 X 14 Exhibit is available in the Original Tab



LEGEND

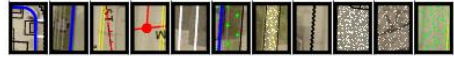
	PAVEMENT MILL AND OVERLAY (1000)
	PAVEMENT MILL AND OVERLAY
	CONCRETE DRIVE APPROACH - 8" THICK
	EDGE MILLING 4" WIDTH @ 10' @ 4" DEPTH
	SIGNAL - 4" THICK
	TOPSOIL SEEDING AND MULCHING
	PAVEMENT MARKINGS
	PROPOSED SIGNAL SIGN
	EXISTING STOP SIGN @ 10' H (ABANDONED)
	PROPOSED CURB
	PROPOSED CURB RAMP

NO. OF SHEETS	2
TOTAL SHEETS	5
DATE	
BY	
CHECKED	
DESIGNED	
IN CHARGE	
APPROVED	
DATE	

EXHIBIT
 SR 316 RECONSTRUCTION \ OPWC
 MAIN STREET AND LONG STREET
 ASHVILLE, OHIO

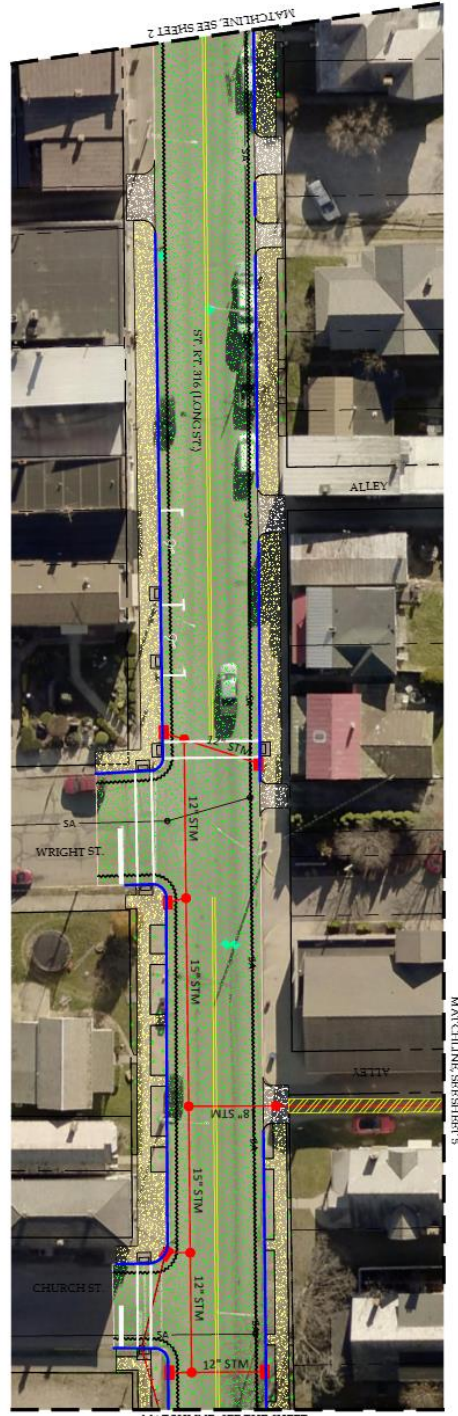
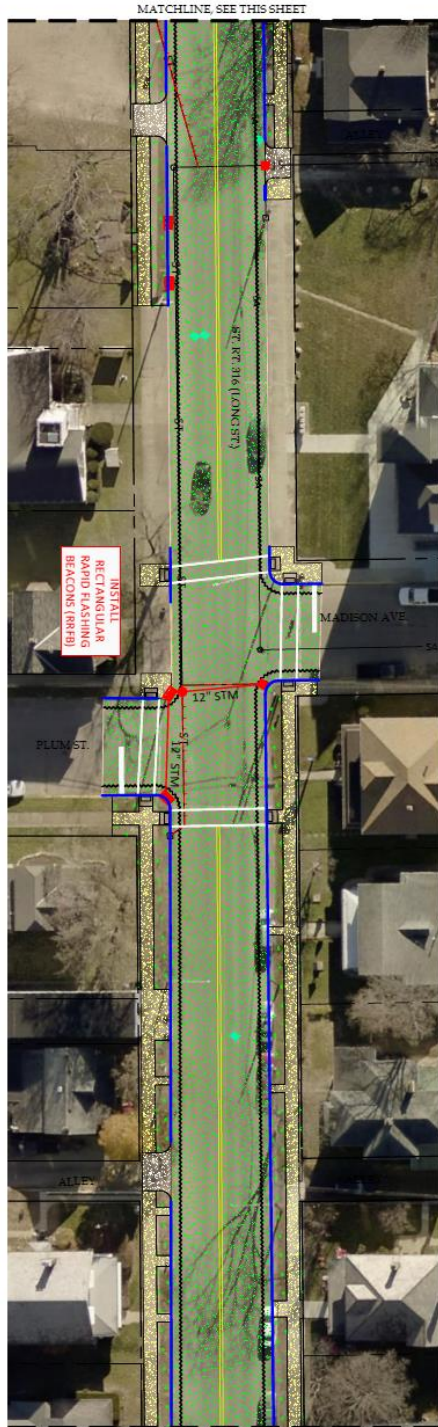
TEBBE CIVIL ENGINEERING, LLC
 5792 Civic Court
 Dayton, Ohio 45424
 Phone (513) 244-4476, Cell (513) 244-0100, Fax (513) 244-0101

A Larger 11 X 14 Exhibit is available in the Original Tab



LEGEND

- PAVEMENT MILL AND OVERLAY (TODAY)
- PAVEMENT MILL AND OVERLAY (FUTURE)
- CONCRETE STREET APPROACH - 8" THICK
- DOT DRAILING (2" WIDTH @ 10' & 20' INT)
- SIDEWALK - 4" THICK
- TORSON
- SECTIONS AND MATCHING
- PAVEMENT MARKINGS
- PROPOSED DOWN SLOPE
- EXISTING STREPS/SLOPE (TO BE ABANDONED)
- PROPOSED CURB
- PROPOSED CURB RAMP

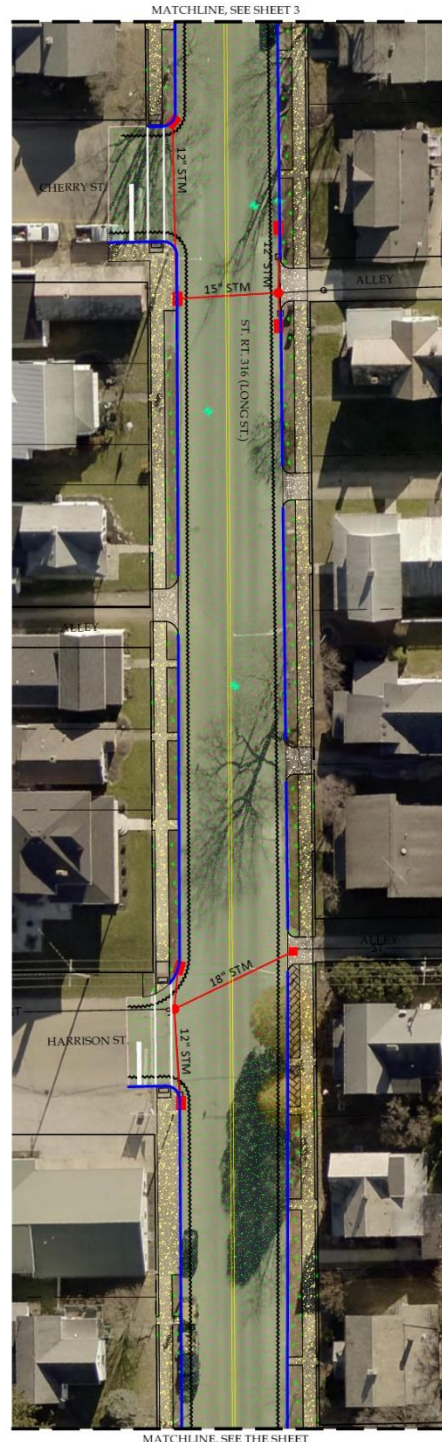
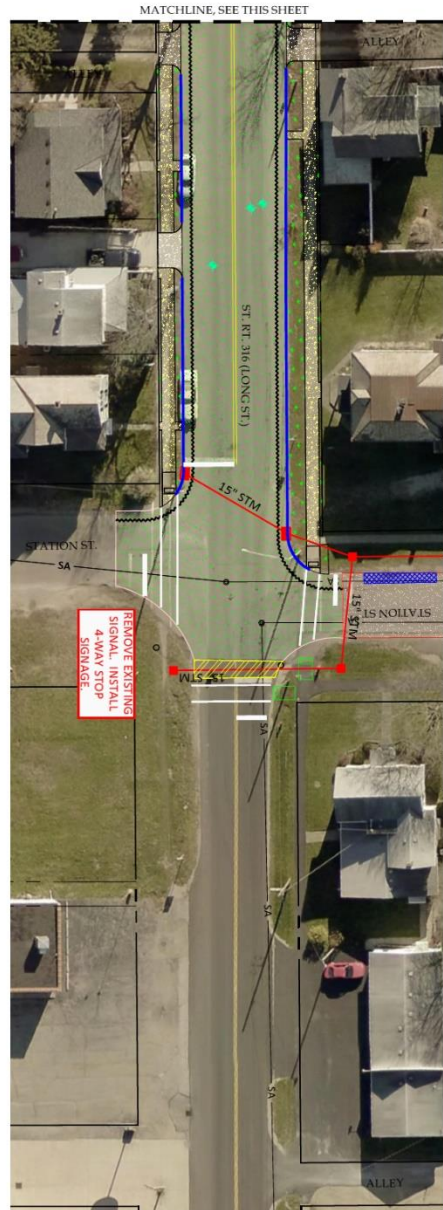


NO.	DATE	DESCRIPTION	BY	CHKD BY

EXHIBIT
SR 316 RECONSTRUCTION \ OPWC
MAIN STREET AND LONG STREET
ASHVILLE, OHIO

TEBBE CIVIL ENGINEERING, LLC
 8702 Galois Court
 Dublin, Ohio 43016
 Phone: (614) 764-4667 Fax: (614) 764-4668
 Email: info@tebbece.com

A Larger 11 X 14 Exhibit is available in the Original Tab



LEGEND

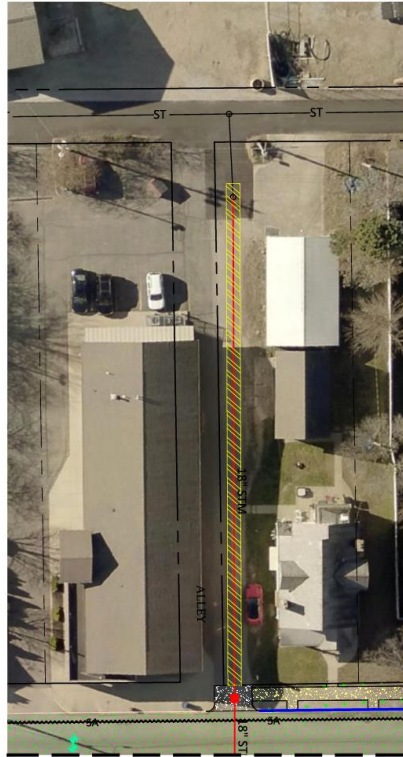
	PAVEMENT MILL AND OVERLAY (DOT)
	PAVEMENT MILL AND OVERLAY
	CONCRETE DRIVE APPROACH - 8" THICK
	EDGE MILLING & WIDTH (8' TO 4' DEPTH)
	SIDEWALK - 4" THICK
	TOPSOIL SEEDING AND MULCHING
	PAVEMENT MARKING
	PROPOSED STORM SEWER
	EXISTING STORM SEWER (TO BE ABANDONED)
	PROPOSED CURB
	PROPOSED CURB RAMP

NO. 001	DATE	BY
NO. 002	DATE	BY
NO. 003	DATE	BY
NO. 004	DATE	BY
NO. 005	DATE	BY
NO. 006	DATE	BY
NO. 007	DATE	BY
NO. 008	DATE	BY
NO. 009	DATE	BY
NO. 010	DATE	BY

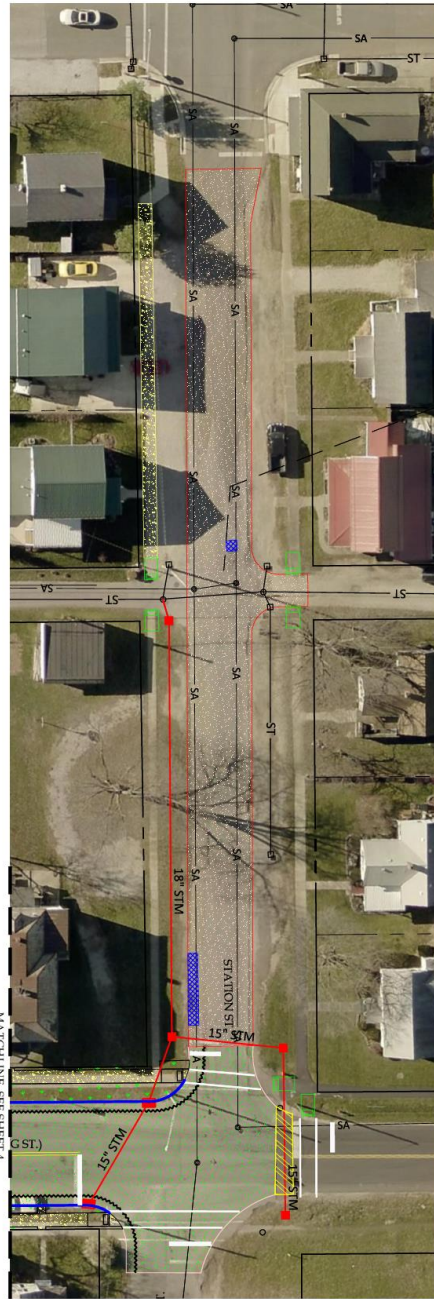
EXHIBIT
SR 316 RECONSTRUCTION \ OPWC
 MAIN STREET AND LONG STREET
 ASHVILLE, OHIO

TEBBE CIVIL ENGINEERING, LLC
 8792 Gallop Court
 Dublin, Ohio 43016
 Phone (614)734-4457 • Fax (614)734-4458 • Email: info@tebbecivil.com

A Larger 11 X 14 Exhibit is available in the Original Tab

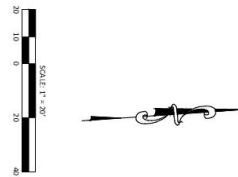


MATCHLINE, SEE SHEET 3



MATCHLINE, SEE SHEET 4

- LEGEND**
- PAVEMENT MILL AND OVERLAY (DOTT)
 - PAVEMENT MILL AND OVERLAY
 - CONCRETE DRIVE APPROACH - 8" THICK
 - EDGE MILLING - 4" WIDTH (OT to 4" DEPTH)
 - SIDEWALK - 4" THICK
 - TOPSOIL SEEDING AND MULCHING
 - PAVEMENT MARKING
 - PROPOSED STORM SEWER
 - EXISTING STORM SEWER (TO BE ABANDONED)
 - PROPOSED CURB
 - PROPOSED CURB RAMP



DATE	BY
DESIGN	CMT
CHECKED BY	CMT
SHEET	5

EXHIBIT
 SR 316 RECONSTRUCTION \ OPWC
 MAIN STREET AND LONG STREET
 CMT

TEBBE CIVIL ENGINEERING, LLC
 8792 Gaelic Court
 Dublin, Ohio 43016
 Phone (614) 704-6467 • Chris@TebbeCivil.com