



# 2017 VILLAGE OF ASHVILLE 4<sup>TH</sup> QUARTERLY F & O REPORT

*Pickaway County 4PC00005*

The Village of Ashville will report on the status of the items identified in the Findings and Orders in Quarterly Reports. The three areas covered include:

- Construction of new Water Resource Recovery Facility (WRRF) in the orders listed as WWTP - Completed
- Create an Infiltration and Inflow (I & I) Plan
- Special Environmental Projects (SEP) - Completed



Section One



**WRRF-Completed**

Section Two



**I & I**

Section Three



**SEP-Completed**

Franklin Christman, Village Administrator

December 2017





In 2010, the Village of Ashville began the journey to replace the existing sanitary plant by selecting URS now AECOM as the Engineering Firm to evaluate and provide the Village Council and Mayor data about our existing facility and provide recommendations on how to proceed.



We look at upgrading, replacing, connecting to an existing facility, or moving to a new location. After extensive research a new location was selected and found. In 2014, the village was placed under the OhioEPA Director's Final Findings and Orders. Three (3) projects were in the Orders:

- Construction of a new Facility
- Infiltration and Inflow (I & I)
- Special Environmental Projects (SEP)



At the end of 2014 the Village of Ashville completed the SEP requirements. We obtained funding from OWDA, OPWC, and DEFA for the construction of the Water Resource Recovery Facility (WRRF). Land was found, purchased, and construction commenced. During the first part of October 2017 the operation of the facility began. By the reporting in this document 100% of the Village of Ashville sanitary waste is going to the WRRF. The next Quarterly Report will specify the fine tuning of the operation of the new facility.

With the completion of the WRRF the Utility Department can concentrate of the I & I Plan. While the WRRF is designed to expand, the work done of I & I will put that expansion further into the future. Therefore, I & I will be a continuous improvement process to enhance collection and to save dollars.

# 2017 VILLAGE OF ASHVILLE 4<sup>TH</sup> QUARTERLY F & O REPORT



## Construction of new Water Resource Recovery Facility (WRRF)

The first section of this quarter report will deal with the status of the Water Resource Recovery Facility (WRRF). The first heading will discuss the design, permit, and bidding status. The second heading will deal with the status of obtaining funds for the WRRF. The third heading will be the Construction section when that began March 2016, see Figure Five.

### PLANNING, DESIGN, PERMIT, AND BID, STATUS - COMPLETED

The Planning, Design, and Permitting phase has been completed.

### FINANCING STATUS - COMPLETED

The majority of the funding for Part A and B is being manage through the Ohio Water Development Authority (OWDA). The \$13,871,722.75 loan for Part A is the Ohio Water Pollution Control Loan Fund (WPCLF) which was acquired with the help of the Division of Environmental & Financial Assistance (DEFA). This loan has interest terms of 0.48%. Land has been acquired and annexed into the Village of Ashville. Construction for Part A of the Water Resource Recovery Facility is underway.

Part B has funding from OPWC for \$500,000.00. The \$989,605.15 balance for Part B is from the Ohio Water Pollution Control Loan Fund (WPCLF) which was acquired through the Division of Environmental & Financial Assistance (DEFA).

1. For Part A the facility a thirty year loan with the Ohio Water Pollution Control Loan Fund (WPCLF) through DEFA was approved for \$13,871,722.75 – See Figure 1.
2. For Part B Round 30 funding request to Ohio Public Works Commission (OPWC) was approved for \$500,000.00 at zero percent interest Loan/Grant CQ39T with a Request to Proceed approved, see Figure 2.
3. For Part B the balance is being requested from Ohio Water Pollution Control Loan Fund (WPCLF) was approved for \$1,064,085, See Figure 3.

3/10/2016

Ohio Water Development Authority



Figure One

## Ashville

Loan	Reports	Other Reports
<b>Description:</b> New Water Resource Recovery Facility NRD	<b>Loan Summary</b>	<b>All Transactions</b>
<b>Purpose:</b> Sewer	<b>Loan Transactions (Detail)</b>	
<b>Account Number:</b> 7256	<b>Disbursement Detail</b>	<b>Forms</b>
<b>EPA ID:</b> CS390122-0010	<b>Audit Confirmation</b>	

## Loan Information

Funding Account Name								Interest Rate	Amount Financed + Interest	Loan Balance Outstanding
Water Pollution Control Loan Fund								0.48%	\$13,871,722.75	\$0.00
Application Status	Loan Status	Disbursement Status	Amortization Status	Term	First Payment Date	Last Payment Date	Pay-Off Method			
Approved			NOT Complete	30	07/01/2018	01/01/2048	Installment			
Total:								\$13,871,722.75	\$0.00	

## Loan Contractor Information

Contractor ID	Contractor Name	Encumbered Amount	Disbursed Amount	Undisbursed Balance Amount
A	Peterson Construction Co.	\$11,580,000.00	\$0.00	\$11,580,000.00
CO	Contingencies	\$644,480.00	\$0.00	\$644,480.00
PL	Planning Loan	\$957,646.75	\$0.00	\$957,646.75
TS	Technical Services	\$642,692.00	\$0.00	\$642,692.00
TS1	Administration	\$46,904.00	\$0.00	\$46,904.00
<b>Total:</b>		<b>\$13,871,722.75</b>	<b>\$0.00</b>	<b>\$13,871,722.75</b>

Figure Two

OHIO PUBLIC WORKS COMMISSION  
APPENDIX E - DISBURSEMENT REQUEST FORM AND CERTIFICATION

DISBURSEMENT REQUEST NUMBER: \_\_\_\_\_

Statement requesting the disbursement of funds from the OPWC pursuant to Section VI of the Project Agreement (the "Agreement") executed between the Director of the Ohio Public Works Commission (the "Director") and **The Village of Ashville, (129-02680 Pickaway County)** (the "Recipient"), dated **July 1, 2016**, for the sole and express purpose of financing the capital improvement project defined and described in Appendix A of the Agreement (the "Project") and named and numbered as **Water Resource Recovery Facility Improve, CQ39T (LOAN)**.

## EXPENDITURES PROGRESS:

	(1) AS PER AGREEMENT	(2) PAID PRIOR TO THIS DRAW	(3) AS PART OF THIS DRAW	(4) PAID TO DATE (Column 2 + 3)
A) Project Engineering Costs				
1) Preliminary Engineering	\$0	\$	\$	\$
2) Final Design	\$0	\$	\$	\$
3) Construction Administration	\$0	\$	\$	\$
B) Right-of-Way	\$0	\$	\$	\$
C) Construction Costs	\$1,553,691	\$	\$	\$
D) Materials Purchased Directly	\$0	\$	\$	\$
E) Permits, Advertising, Legal	\$0	\$	\$	\$
F) Construction Contingencies	\$0	\$ N/A	\$ N/A	\$ N/A
G) Totals	\$1,553,691	\$	\$	\$

## FINANCING PROGRESS:

	(1) AS PER AGREEMENT	(2) USED PRIOR TO THIS DRAW	(3) AS PART OF THIS DRAW	(4) USED TO DATE (Column 2 + 3)
H) OPWC Funds	\$500,000	\$	\$	\$
I) Local Share				
1) In-kind Contributions	\$0	\$	\$	\$
2) Public Revenues	\$0	\$	\$	\$
3) Private Revenues	\$0	\$	\$	\$
J) Other Public Revenues				
1) ODOT/FHWA	\$0	\$	\$	\$
2) OEPA	\$1,053,691	\$	\$	\$
3) OWDA	\$0	\$	\$	\$
4) CDBG	\$0	\$	\$	\$
5) Other	\$0	\$	\$	\$
K) Total Local and Other Public Revenues	\$1,053,691	\$	\$	\$
L) Totals (H+K for each column)	\$1,553,691	\$	\$	\$

(NOTE: Column totals for Line L must be equal to the column totals for Line G.)

**OHIO PUBLIC WORKS COMMISSION**  
Infrastructure Programs  
Request To Proceed

Project Name: Village of Ashville, Ohio  
Project Name: Water Resource Recovery Facility Improve  
Contact: Franklin Christmas, Village Administrator  
Email: fchristmas@ashvilleohio.gov

OPWC Project # C-039T  
Date: 12/20/2016  
Phone: (740) 357-1945

1. Flood Damage Reduction Standards (for projects involving construction or enhancements only)  
A Local Floodplain Permit or approval from ODNR must be issued for this project if it is in a 100-year floodplain.  
Is this project located within a 100-year floodplain? ☐ Yes ☒ No - Proceed to Section 2  
Does this applicant participate in the National Flood Insurance Program? ☐ Yes ☒ No  
If Yes, attach a copy of your local floodplain permit.  
If No, attach a letter from the ODNR stating the requirements of the National Flood Insurance Program have been met.

2. Water Supply Project - Attachment Checklist  
☐ CEPA Plan Approval Letter

3. Request for Change (Include attachments)  
☐ Project Schedule  
☐ Local Officials

4. Vendor Designation ☒ Contractor ☐ Supplier ☐ Consultant ☐ Check F/M/B/C  
Name: Helle Extruding, Inc. Federal Tax ID: 31-3451322  
Address: 177 Twp Rd 191  
City: Kelleys Hill State: OH Zip: 45645  
Contact: Josh Fields Phone: (740) 532-1780  
Scope of Work: Install sewer lines from and to WRRF from current facility Contract Amount: \$1,485,005.15  
If Construction, Start Date: 12/13/2016 Estimated Completion Date: 12/13/2017

5. Local Authorization  
Authorized Signature: *Franklin Christmas* Date: October 26, 2016  
Return form and attachments to OPWC by one of the following methods (original not required)  
Mail: Ohio Risk: Water Commission, 65 E. State Street, Suite 313, Columbus, Ohio 43215  
Email: The appropriate Program Representative  
Tel: 614-455-4554

For OPWC Use Only  
Notice to Proceed ☐ Approved ☐ Disapproved  
Required for Change ☐ Approved ☐ Disapproved  
Notes: \_\_\_\_\_  
Authorized Signature: \_\_\_\_\_ Date: \_\_\_\_\_

Form OPWC003 Rev. 6-12

**OHIO PUBLIC WORKS COMMISSION**  
State of Ohio  
PUBLIC WORKS COMMISSION  
Infrastructure Programs Small Government Programs Emergency Programs Green Space Conservation Programs

Approved Requests To Proceed

OPWC no longer issues the 100-year flood map. It is the responsibility of the applicant to determine if the project is in a 100-year floodplain. The applicant is responsible for obtaining the necessary permits and approvals from the appropriate agencies. The applicant is responsible for obtaining the necessary permits and approvals from the appropriate agencies. The applicant is responsible for obtaining the necessary permits and approvals from the appropriate agencies.

Proj. ID	Date	Project	Amount
00015	11/18/2016	JP 01-001-001	1,111,359
00016	11/18/2016	Benbowe Central Line, Inc.	11,312
00017	11/18/2016	John Johnson, LLC	112,839
00018	11/18/2016	Albion, Ohio, Inc.	75,300
00019	11/18/2016	Thompson, Inc.	10,000
00020	12/13/2016	William, Inc.	265,445
00021	12/13/2016	Albion, Ohio, Inc.	25,300
00022	12/13/2016	Adrian, Inc.	1,401,391
00023	12/13/2016	Benbowe Central Line, Inc.	11,312
00024	12/13/2016	Benbowe Central Line, Inc.	11,312
00025	12/13/2016	Benbowe Central Line, Inc.	11,312
00026	12/13/2016	Benbowe Central Line, Inc.	11,312
00027	12/13/2016	Benbowe Central Line, Inc.	11,312
00028	12/13/2016	Benbowe Central Line, Inc.	11,312
00029	12/13/2016	Benbowe Central Line, Inc.	11,312
00030	12/13/2016	Benbowe Central Line, Inc.	11,312
00031	12/13/2016	Benbowe Central Line, Inc.	11,312
00032	12/13/2016	Benbowe Central Line, Inc.	11,312
00033	12/13/2016	Benbowe Central Line, Inc.	11,312
00034	12/13/2016	Benbowe Central Line, Inc.	11,312
00035	12/13/2016	Benbowe Central Line, Inc.	11,312
00036	12/13/2016	Benbowe Central Line, Inc.	11,312
00037	12/13/2016	Benbowe Central Line, Inc.	11,312
00038	12/13/2016	Benbowe Central Line, Inc.	11,312
00039	12/13/2016	Benbowe Central Line, Inc.	11,312
00040	12/13/2016	Benbowe Central Line, Inc.	11,312
00041	12/13/2016	Benbowe Central Line, Inc.	11,312
00042	12/13/2016	Benbowe Central Line, Inc.	11,312
00043	12/13/2016	Benbowe Central Line, Inc.	11,312
00044	12/13/2016	Benbowe Central Line, Inc.	11,312
00045	12/13/2016	Benbowe Central Line, Inc.	11,312
00046	12/13/2016	Benbowe Central Line, Inc.	11,312
00047	12/13/2016	Benbowe Central Line, Inc.	11,312
00048	12/13/2016	Benbowe Central Line, Inc.	11,312
00049	12/13/2016	Benbowe Central Line, Inc.	11,312
00050	12/13/2016	Benbowe Central Line, Inc.	11,312
00051	12/13/2016	Benbowe Central Line, Inc.	11,312
00052	12/13/2016	Benbowe Central Line, Inc.	11,312
00053	12/13/2016	Benbowe Central Line, Inc.	11,312
00054	12/13/2016	Benbowe Central Line, Inc.	11,312
00055	12/13/2016	Benbowe Central Line, Inc.	11,312
00056	12/13/2016	Benbowe Central Line, Inc.	11,312
00057	12/13/2016	Benbowe Central Line, Inc.	11,312
00058	12/13/2016	Benbowe Central Line, Inc.	11,312
00059	12/13/2016	Benbowe Central Line, Inc.	11,312
00060	12/13/2016	Benbowe Central Line, Inc.	11,312
00061	12/13/2016	Benbowe Central Line, Inc.	11,312
00062	12/13/2016	Benbowe Central Line, Inc.	11,312
00063	12/13/2016	Benbowe Central Line, Inc.	11,312
00064	12/13/2016	Benbowe Central Line, Inc.	11,312
00065	12/13/2016	Benbowe Central Line, Inc.	11,312
00066	12/13/2016	Benbowe Central Line, Inc.	11,312
00067	12/13/2016	Benbowe Central Line, Inc.	11,312
00068	12/13/2016	Benbowe Central Line, Inc.	11,312
00069	12/13/2016	Benbowe Central Line, Inc.	11,312
00070	12/13/2016	Benbowe Central Line, Inc.	11,312
00071	12/13/2016	Benbowe Central Line, Inc.	11,312
00072	12/13/2016	Benbowe Central Line, Inc.	11,312
00073	12/13/2016	Benbowe Central Line, Inc.	11,312
00074	12/13/2016	Benbowe Central Line, Inc.	11,312
00075	12/13/2016	Benbowe Central Line, Inc.	11,312
00076	12/13/2016	Benbowe Central Line, Inc.	11,312
00077	12/13/2016	Benbowe Central Line, Inc.	11,312
00078	12/13/2016	Benbowe Central Line, Inc.	11,312
00079	12/13/2016	Benbowe Central Line, Inc.	11,312
00080	12/13/2016	Benbowe Central Line, Inc.	11,312
00081	12/13/2016	Benbowe Central Line, Inc.	11,312
00082	12/13/2016	Benbowe Central Line, Inc.	11,312
00083	12/13/2016	Benbowe Central Line, Inc.	11,312
00084	12/13/2016	Benbowe Central Line, Inc.	11,312
00085	12/13/2016	Benbowe Central Line, Inc.	11,312
00086	12/13/2016	Benbowe Central Line, Inc.	11,312
00087	12/13/2016	Benbowe Central Line, Inc.	11,312
00088	12/13/2016	Benbowe Central Line, Inc.	11,312
00089	12/13/2016	Benbowe Central Line, Inc.	11,312
00090	12/13/2016	Benbowe Central Line, Inc.	11,312
00091	12/13/2016	Benbowe Central Line, Inc.	11,312
00092	12/13/2016	Benbowe Central Line, Inc.	11,312
00093	12/13/2016	Benbowe Central Line, Inc.	11,312
00094	12/13/2016	Benbowe Central Line, Inc.	11,312
00095	12/13/2016	Benbowe Central Line, Inc.	11,312
00096	12/13/2016	Benbowe Central Line, Inc.	11,312
00097	12/13/2016	Benbowe Central Line, Inc.	11,312
00098	12/13/2016	Benbowe Central Line, Inc.	11,312
00099	12/13/2016	Benbowe Central Line, Inc.	11,312
00100	12/13/2016	Benbowe Central Line, Inc.	11,312



**Ohio Environmental Protection Agency**  
**Division of Environmental & Financial Assistance**  
 50 West Town Street, Suite 700, Columbus, Ohio 43215  
 Ph: (614) 644-2798 Fx: (614) 644-3687  
[www.epa.ohio.gov/default](http://www.epa.ohio.gov/default)

Water Pollution Control Loan Fund (WPCLF) SEWERED CONSTRUCTION APPLICATION					
Community Information					
Project Name	Village of Ashville, Ohio Sanitary Sewer Improvements 2016 (Part B)				
Entity (Village, City or County)	Village of Ashville (Pickaway County)				
Address	200 Station Street East				
City	Ashville	Ohio	Zip	43103	
Authorized Representative	Franklin Christman			Title	Village Administrator
Telephone	740-983-7132			Fax	740-983-7132
Email	<a href="mailto:fchristman@ashvilleohio.gov">fchristman@ashvilleohio.gov</a>				
Community (DUNS) #	41858922				
Consultant Engineer Name of Firm	AECOM				
Engineering Contact	Matthew Noelker, P.E.				
Telephone	614-600-5980			Fax	614-464-0588
Email	<a href="mailto:matthew.noelker@aecom.com">matthew.noelker@aecom.com</a>				
Project Type					
Construction Project	X	Loan Terms: (max. of 20 yrs)	30	Expected Loan Award Date:	12/8/2016
Project Description					
Please provide a narrative describing the project. Attach additional pages if necessary.					
The project consists of a 24-inch gravity outfall sewer and a 10-inch forcemain. The outfall sewer will be constructed from the site of a new WRRF to the Village's existing wastewater treatment plant outfall. The forcemain will be constructed from a pump station at the Village's existing wastewater treatment plant to the new WRRF. Also included are 18-inch and 24-inch gravity influent sewers, storm sewer relocation, and all associated improvements as shown on the plans and specified in the bid documents.					
Project Financing					
WPCLF Loan Amount	\$989,605.15				
Local Share					
Ohio Water Development Authority	(OWDA)				
Ohio Public Works Commission	(OPWC)				
Community Development Block Grant	(CDBG)				
USEPA State and Tribal Assistance Grant	(STAG)				
Appalachian Regional Commission	(ARC)				
Other (Specify)					
Other (Specify)					
<b>Total Project Cost</b>	<b>\$1,489,605.15</b>				

Page 1



## Ashville

Loan	Reports	Other Reports
<b>Description:</b> Effluent Sewer and Force Main <b>Purpose:</b> Sewer <b>Account Number:</b> 7546 <b>EPA ID:</b> C0390122-0011	<b>Loan Summary</b> <b>Loan Transactions (Detail)</b> <b>Disbursement Detail</b> <b>Audit Confirmation</b>	<b>All Transactions</b> <b>Forms</b> <b>Disbursement Request</b>

## Loan Information

Loan Information								Interest Rate	Amount Financed + Interest	Loan Balance Outstanding
Funding Account Name								1.14%	\$1,064,171.35	\$560,792.46
Water Pollution Control Loan Fund										
Application Status	Loan Status	Disbursement Status	Amortization Status	Term	First Payment Date	Last Payment Date	Pay-Off Method			
Approved	Open	Active	NOT Complete	30	01/01/2019	07/01/2048	Installment			
Total:									\$1,064,171.35	\$560,792.46

## Loan Contractor Information

Contractor ID	Contractor Name	Encumbered Amount	Disbursed Amount	Undisbursed Balance Amount
A	Pieds Excavating, Inc.	\$989,605.15	\$560,706.52	\$428,898.63
CO	Continucon's	\$74,480.26	\$0.00	\$74,480.26
TS	Technical Services	\$0.00	\$0.00	\$0.00
<b>Total:</b>		<b>\$1,064,085.41</b>	<b>\$560,706.52</b>	<b>\$503,378.89</b>

Home -&gt; Loan List

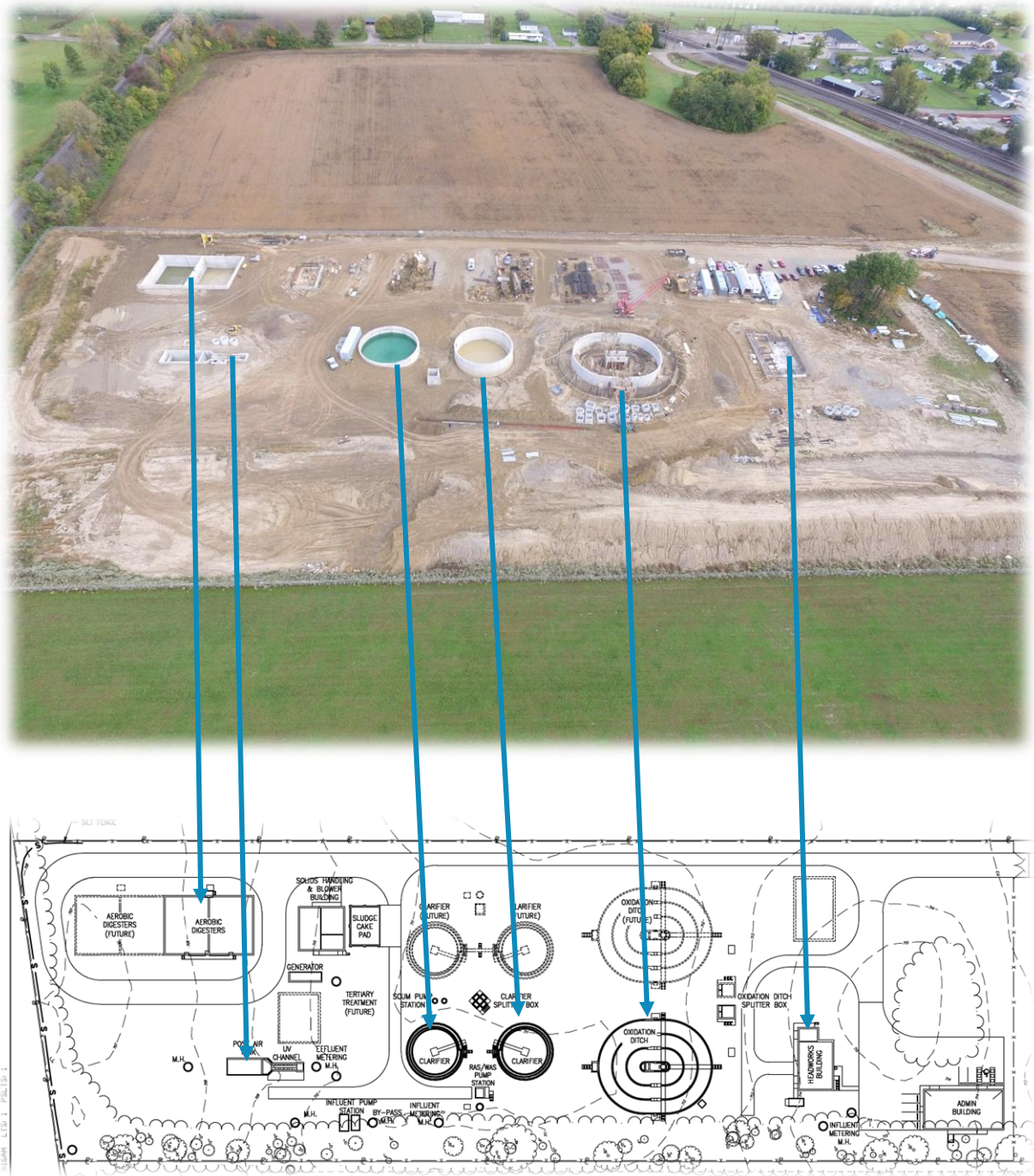
All of the above applications and support material can be found on the webpage for this project: <http://www.ashvilleohio.gov/index.php/water-resource-recovery-facility>

## CONSTRUCTION STATUS - COMPLETED

### Part A Construction:

Peterson Construction started construction on March 21, 2016. Progress has been made on the site, see Figure Four.

Figure Four

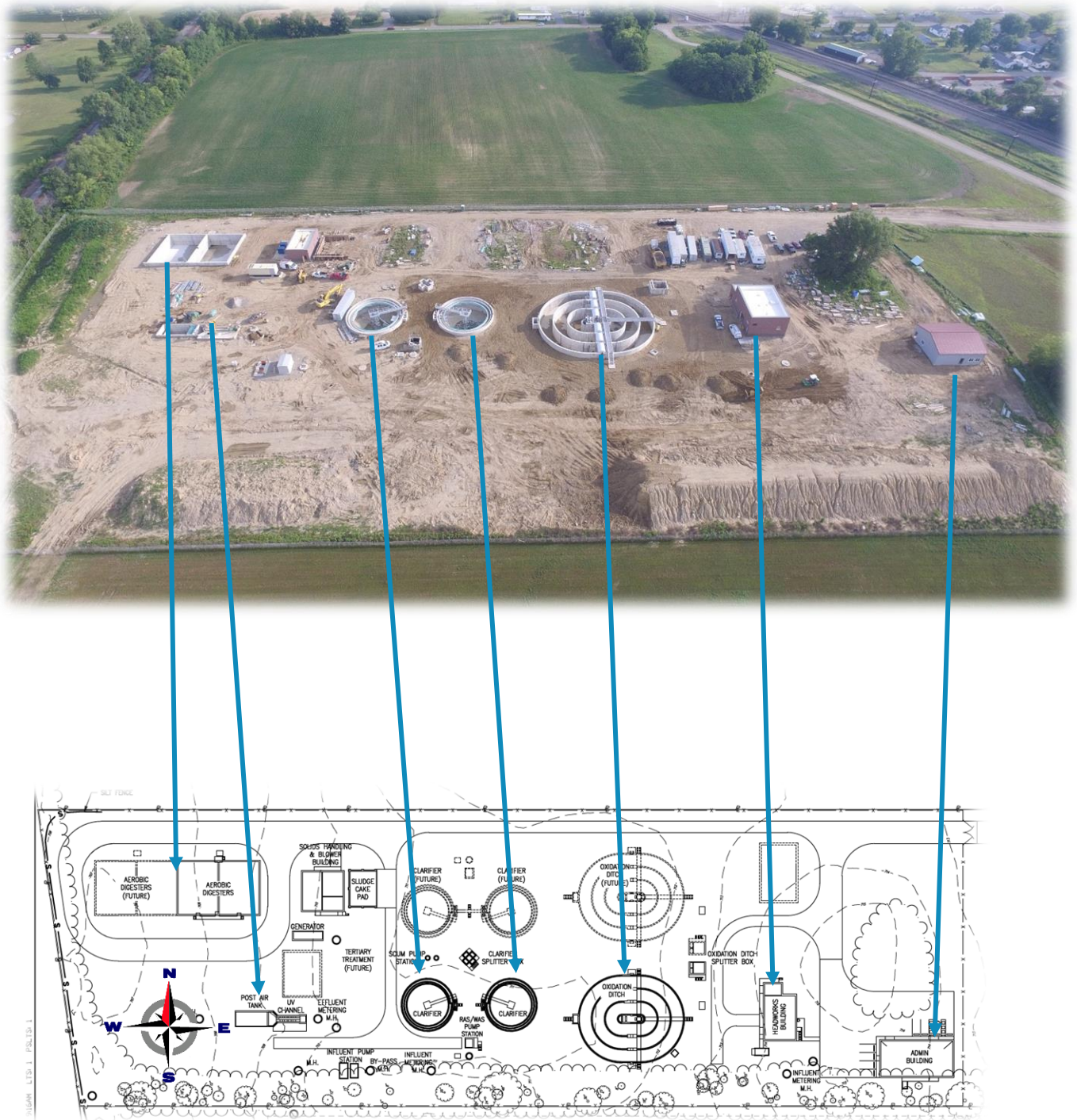


## CONSTRUCTION STATUS

### Part A Construction:

### Figure Four Continued

Peterson Construction started construction on June 22, 2017. Progress has been made on the site, see Figure Four.

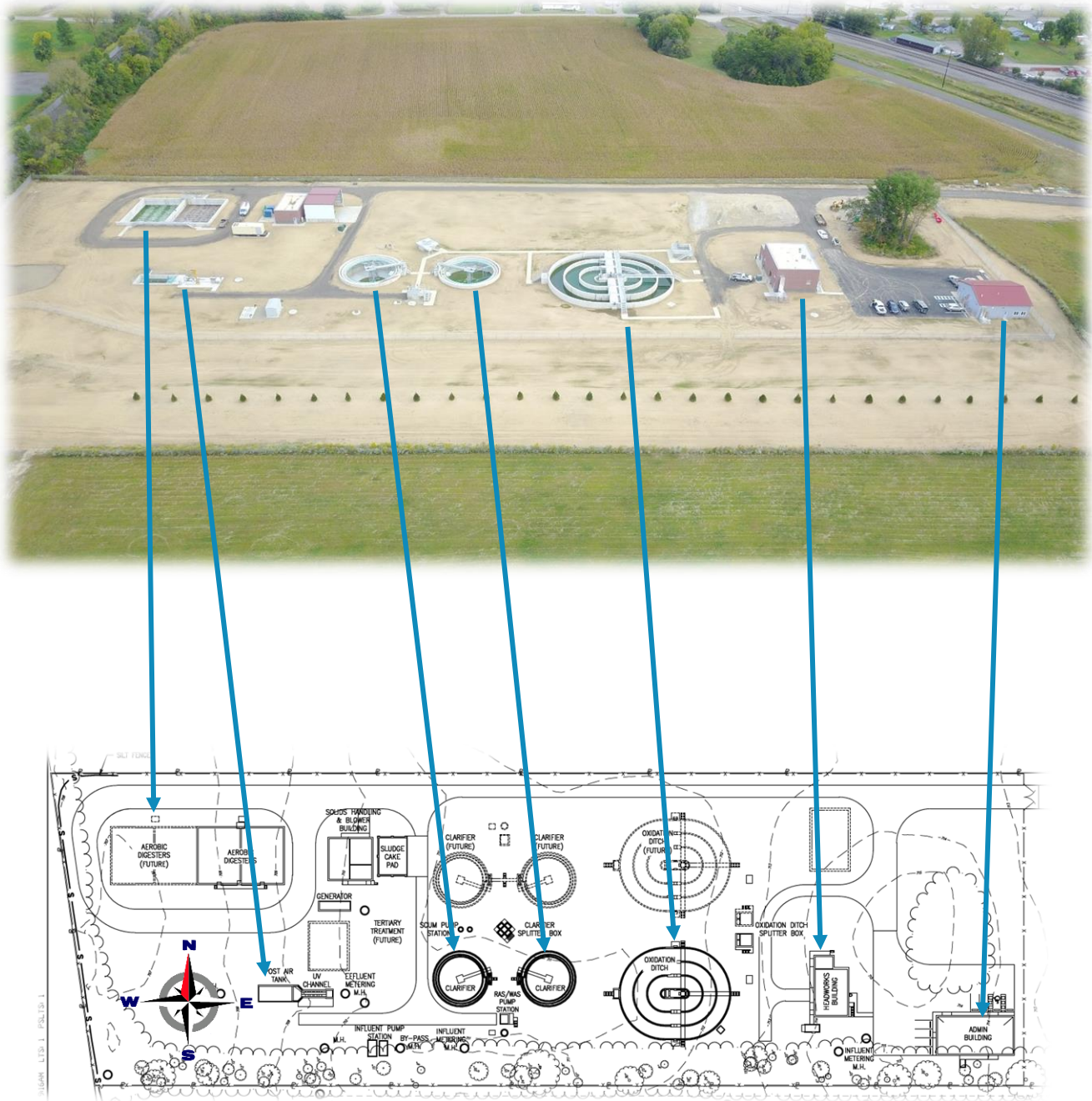


## CONSTRUCTION STATUS

Figure Four Continued

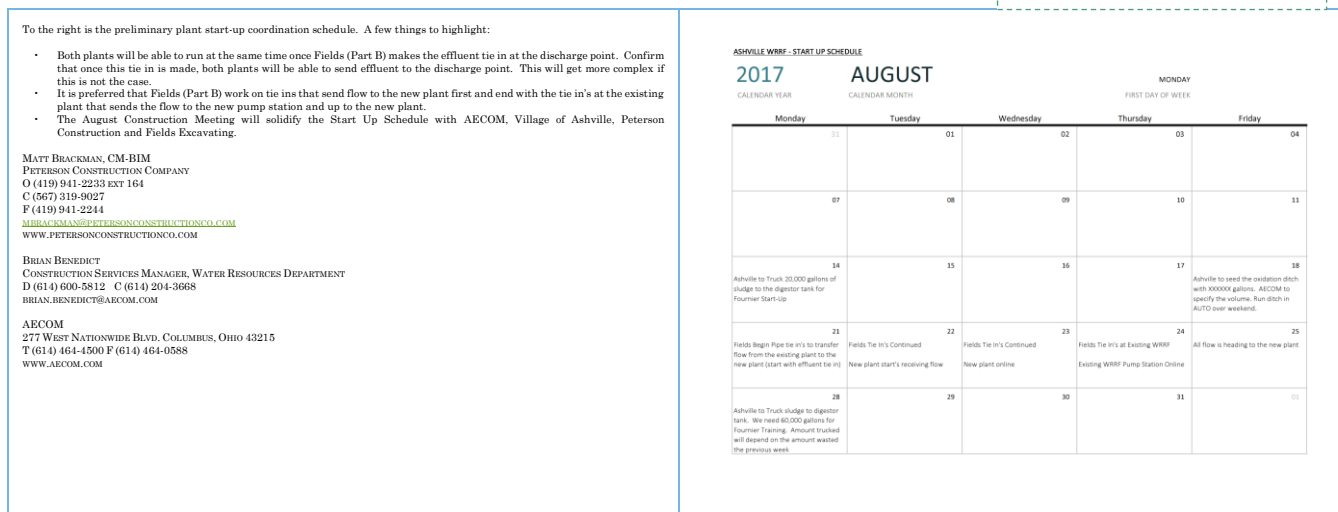
### Part A Construction:

Peterson Construction started construction on March 21, 2016. The aerial view is from late September. The week of October 2, 2017 various portion of the facility were place in operation. By Friday, October 6<sup>th</sup> half the village, south of Station Street was being feed into the facility. The Force Main was place in service and by Monday October 9<sup>th</sup> all areas of the village were going to the WRRF.

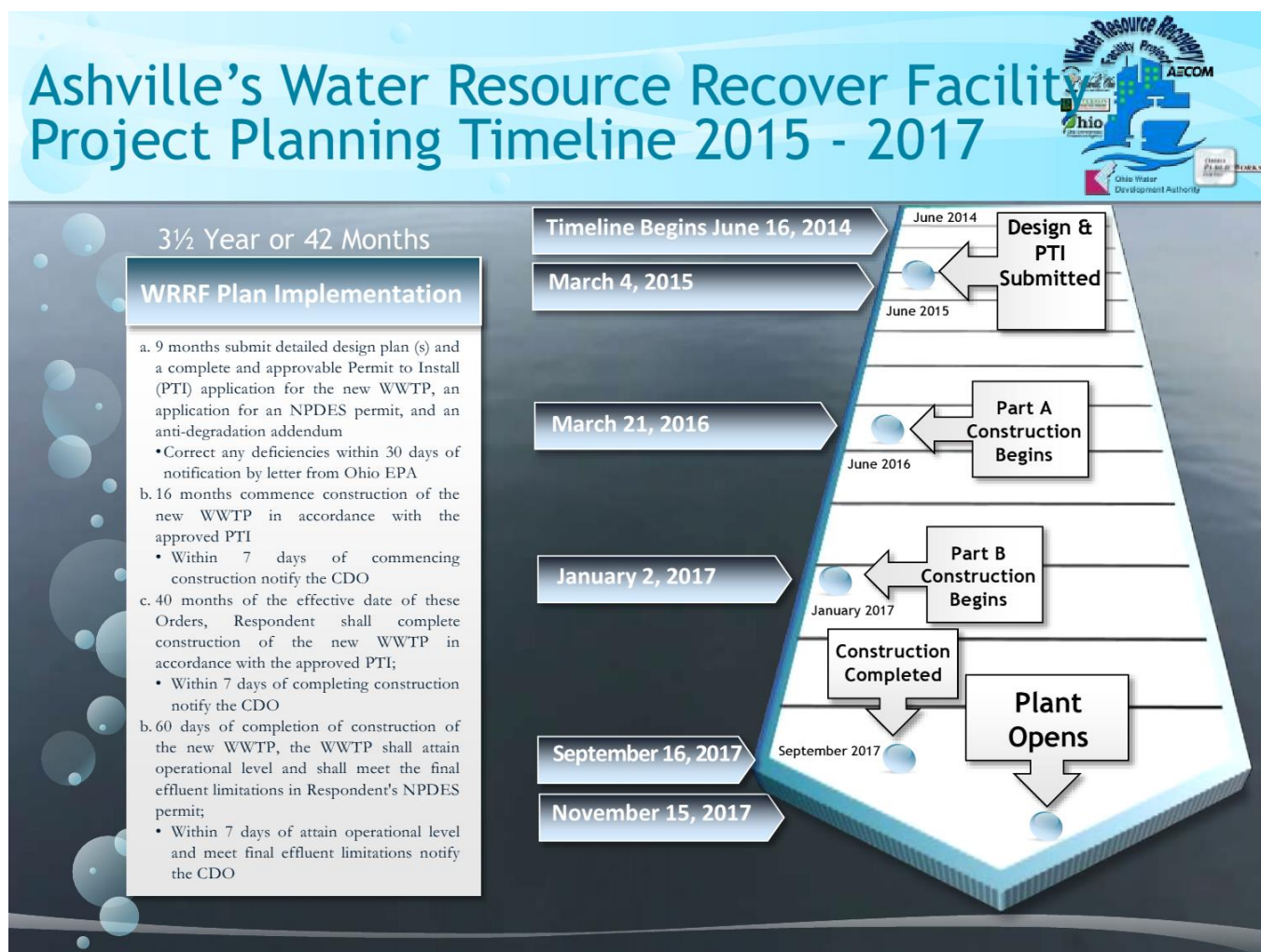


Peterson Construction started construction on March 21, 2016. During the Monthly Construction Meeting progress is reviewed and reflected in the updated Peterson Schedule, see Figure Five.

Figure Five



The above schedule was an update presented by Peterson Construction at the July 2017 monthly construction meeting and through email communication.



## WATER RESOURCE RECOVERY FACILITY WEBPAGE - COMPLETED

This webpage can be accessed at [www.ashvilleohio.gov](http://www.ashvilleohio.gov). On the home page you click on the logo that was designed for this project, see image to the right. That page will inform the residents on the status of this project. Figure Eight represents the WRRF Project Home Webpage You can assess through the indicated logo or <http://www.ashvilleohio.gov/index.php/water-resource-recovery-facility>



Figure Eight

Water Resource Recovery Facility

Page 1 of 11

This page is established to provide you information on this project.

Water Resource Recovery Facility

The construction of the WRRF in Pictures

Water Resource Recovery Facility

The construction of the WRRF in Pictures

Construction Photos for Part A

Construction Process from Bidding to Construction for Part B

Part B in Photos

Construction Process from Bidding to Construction for Part A

WRRF EA and FONSI

Property Acquisition

Ohio EPA Director's Final Finding and Orders Quarterly Report

OWDA, DEFA, WPCLF, and OPWC Loan Information

URS and AECOM Information

All Pages

page updated April 24, 2017 >> photos on Part A & B progress

page updated April 14, 2017 >> Part A Schedule

page updated February 17, 2017 >> Part B

page updated February 17, 2017 >> Timeline

page updated November 16, 2016 >> Loan Documents

page updated November 2, 2016 >> Bid Documents

page updated October 7, 2016 >> Pre-bid Agenda

page updated August 25, 2016 >> Construction Schedule

page updated August 4, 2016 >> OWPC Loan Contract and Information

page updated October 10, 2016 >> Construction Photos

page updated April 12, 2016 >> DEFA Loan Documents

By clicking on many of the images below you can access pdfs of the items indicated.

# 2017 VILLAGE OF ASHVILLE 4<sup>TH</sup> QUARTERLY F & O REPORT



## Infiltration and Inflow (I & I) Reduction Plan

The second section of this quarterly report will deal with the status of I & I. The first heading will discuss the work being done on the I & I Reduction Plan Procedure Manual and the I & I Tool Box. The second heading will deal with the funding for an I & I Program.

## INFILTRATION AND INFLOW (I & I) PLAN IMPLEMENTATION

In the previous quarterly reports there was a focus on the I & I Reduction Plan which included an I & I Tool Box. That plan included monitoring “Metersheds” from that metering the Village has decided to contract with Hunt Engineering to LLC to do the following for Beaver Alley:

### Scope of Services

1. Develop cost analysis of feasible alternatives for inflow and infiltration mitigation in the Village of Ashville gravity wastewater collection system of the sewerage serving the east side of East Street and the west side of Walnut Street from the northern terminal end at Station Street to the southern extent of the south flow direction to Church Street. Alternatives will be developed by evaluation of existing conditions from data and information collected by the Village.
2. Design and prepare professional engineering drawings of the proposed mitigation strategy for the inflow and infiltration repairs/replacement of the Village of Ashville collection system in the above referenced section of the system. Survey data for design plans will be based on original contract drawings of the system unless they cannot be located. If a professional survey of the alignment is required due to the lack of existing plans, an additional fee will be required as specified below.
3. Draft contractor specifications for use in bid documents for public bidding of repair/replacement project.
4. Coordinate with Ohio EPA regarding the mitigation measures chosen and complete any required Permit-to-Install or Plan Review application for Ohio EPA approval for this project as necessary.



The intent with the Scope of Service of Hunt Engineering would be to completely evaluate the connections to the storm and sanitary lines in Beaver Alley. This includes mains and laterals. The main will be completely rehabilitated. At the same time any problem outside the main that is identified will be corrected. Mr. Hunt has begun survey and evaluation of the Beaver Alley storm and sanitary lines. We expect a recommendation from him by the next quarterly report.

While the Beaver Alley Project is designed and completed another line for rehabilitation will be identified to move forward within the I & I Reduction Plan Manual and Toole Box.



Another Alley that the Utility Department has begun working on I & I involves Griffith Alley, see above Map. It has been videoed and a plan to remove identified areas of I & I are being formulated and implemented. Exact actions will be included in future Quarterly Reports.

## FINANCING STATUS

There are two internal funding sources for I & I. First the Village has created in their Appropriation Budget an I & I Fund Account 34¢ for every 1000 gallons of water used will go exclusively to I & I Reduction. The effect of this can be seen in the Revenue Status Report through October 2016, see Figure Nine. The I & I account generated \$102,161.25 in revenue. The second source of funding will be an existing Stormwater Fund and through October 2016 that fund collected \$70,767.40, see Figure Nine. The two funding sources will be used to establish a \$50,000 per year appropriation budget for I & I. Some of this will be directly used. Another portion will be used as seed money for Grants and Loans.

The Quality Monitor “Dashboard” is still being developed in Excel to quantify this process. This Dashboard will be used to measure how much is spent in relationship to how affective the I & I intervention has been.

## I & I REDUCTION WEBPAGE

Since that Plan and Tool Box is already submitted this quarterly report will not repeat that entire plan. The entire Plan and Tool Box can be accessed at [www.ashvilleohio.gov](http://www.ashvilleohio.gov). On the home page you click on the logo that was designed for the Plan, see above. That page will inform the residents the status of the project. As the Beaver Alley Project moves forward it will be added as a Project Webpage. All the items above can be found on this webpage by clicking on the following icon.

