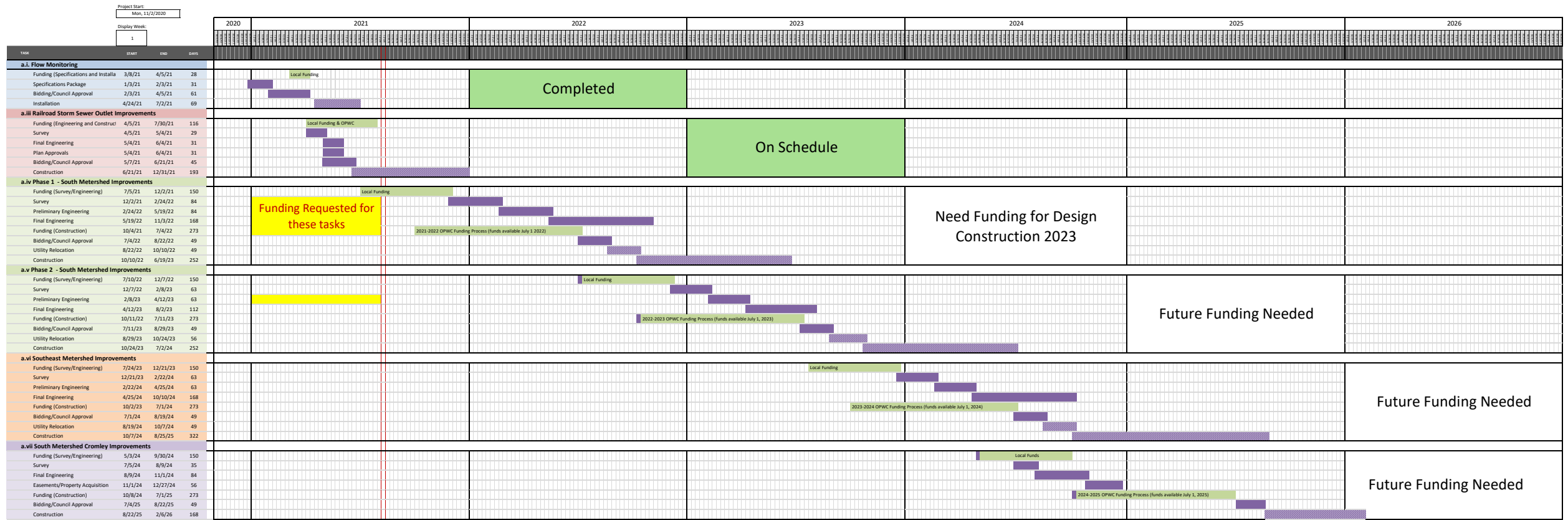


ASHVILLE DFFO PROJECT TIMELINE



FUTURE

Maple Street Sanitary Improvements
Part 1 - North Metershed sanitary tributary re-direction upsize force main
Part 2 - North Metershed sanitary tributary re-direction from Ashton Village
Main Street to East Storm re-direction
Main Street Sanitary under railroad upsting

Project	2020		2021		2022		2023		2024		2025		2026		Total
	Survey/Design	Construction	Survey/Design	Construction	Survey/Design	Construction	Survey/Design	Construction	Survey/Design	Construction	Survey/Design	Construction	Survey/Design	Construction	
c.i. Flow Monitoring	\$10,000		\$5,000	\$61,500	\$5,000	-	\$5,000	-	\$5,000	-	\$5,000	-	\$5,000	-	\$101,500
c.ii Railroad Storm Sewer Outlet Improvements	\$10,000		\$4,670	\$105,000	-	-	-	-	-	-	-	-	-	-	\$119,670
c.iii Phase 1 - South Metershed Improvements	-	-	\$150,000	-	\$160,000	\$1,600,000	-	-	-	-	-	-	-	-	\$1,910,000
c.iii Phase 2 - South Metershed Improvements	-	-	-	-	\$150,000	-	\$160,000	\$1,600,000	-	-	-	-	-	-	\$1,910,000
c.iv Southeast Metershed Improvements	-	-	-	-	-	-	\$0	-	\$120,000	-	\$1,400,000	-	-	-	\$1,640,000
c.v South Metershed Cromley Improvements	-	-	\$0	-	\$15,000	\$0	\$15,000	-	\$15,000	-	\$15,000	-	-	\$440,000	\$500,000
	\$20,000	\$0	\$159,670	\$166,500	\$330,000	\$1,600,000	\$180,000	\$1,600,000	\$140,000	\$0	\$140,000	\$1,400,000	\$5,000	\$440,000	\$6,181,170
	\$20,000		\$326,170		\$1,930,000		\$1,780,000		\$140,000		\$1,540,000		\$445,000		\$6,161,170

* costs are estimates based on preliminary project research