



Ashville, Ohio



Village of Ashville

P.O. Box 195

200 East Station Street

Ashville, OH 43103

Office: 740/983-6367 • Fax: 740/983-4703

Website: www.ashvilleohio.gov



Ashville's Project Page

This page will link you to all projects in the Village of Ashville

Park



Street



Utility



Ashville, Ohio
www.ashvilleohio.gov



Ashville, Ohio



Village of Ashville

P.O. Box 195

200 East Station Street

Ashville, OH 43103

Office: 740/983-6367 • Fax: 740/983-4703

Website: www.ashvilleohio.gov



State Route 316 Resurface, Sidewalk (ADA), Stormwater Improvement Project



Ashville, Ohio

www.ashvilleohio.gov

Village of Ashville Service Department

200 East Station Street

Ashville, OH 43103

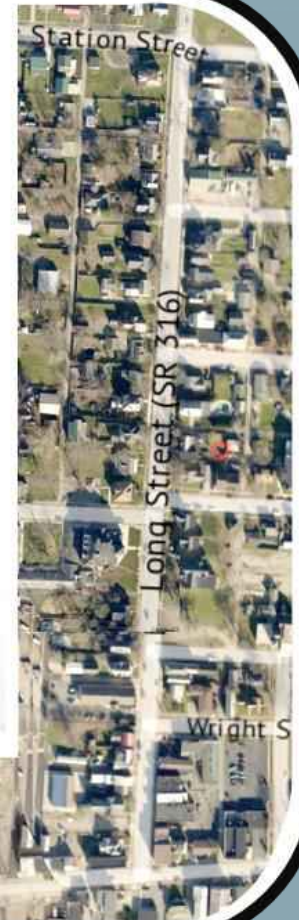
Phone: (740) 983-6367

Charles K. Wise,

Mayor of Ashville



<http://www.ashvilleohio.gov/index.php/16-village-of-ashville/264-state-route-316-resurface-long-sidewalk-ada-stormwater-improvement-project>





Ashville, Ohio



Village of Ashville

P.O. Box 195

200 East Station Street

Ashville, OH 43103

Office: 740/983-6367 • Fax: 740/983-4703

Website: www.ashvilleohio.gov



West Main Street Sidewalks





Ashville, Ohio



Village of Ashville

P.O. Box 195

200 East Station Street

Ashville, OH 43103

Office: 740/983-6367 • Fax: 740/983-4703

Website: www.ashvilleohio.gov



West Main Street Sidewalks





Ashville, Ohio



Village of Ashville

P.O. Box 195

200 East Station Street

Ashville, OH 43103

Office: 740/983-6367 • Fax: 740/983-4703

Website: www.ashvilleohio.gov



West Main & Cromley Street





Ashville, Ohio



Village of Ashville

P.O. Box 195

200 East Station Street

Ashville, OH 43103

Office: 740/983-6367 • Fax: 740/983-4703

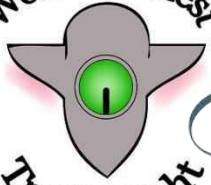
Website: www.ashvilleohio.gov



West Main Street & Alley



World's Oldest
Traffic Light



Ashville, Ohio



Village of Ashville

P.O. Box 195

200 East Station Street

Ashville, OH 43103

Office: 740/983-6367 • Fax: 740/983-4703

Website: www.ashvilleohio.gov



Long Street (Southwest)





Ashville, Ohio



Village of Ashville

P.O. Box 195

200 East Station Street

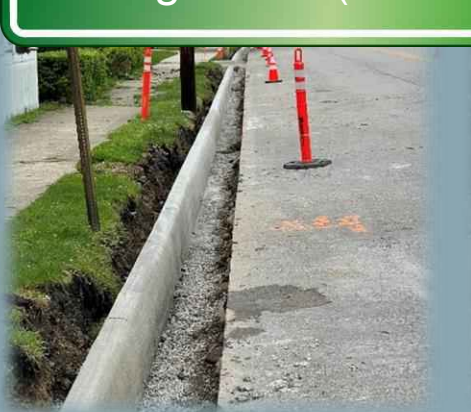
Ashville, OH 43103

Office: 740/983-6367 • Fax: 740/983-4703

Website: www.ashvilleohio.gov



Long Street (Southwest)





Ashville, Ohio



Village of Ashville

P.O. Box 195

200 East Station Street

Ashville, OH 43103

Office: 740/983-6367 • Fax: 740/983-4703

Website: www.ashvilleohio.gov



Long Street (Southwest)





Ashville, Ohio



Village of Ashville

P.O. Box 195

200 East Station Street

Ashville, OH 43103

Office: 740/983-6367 • Fax: 740/983-4703

Website: www.ashvilleohio.gov



Long Street (Southwest)





Ashville, Ohio



Village of Ashville

P.O. Box 195

200 East Station Street

Ashville, OH 43103

Office: 740/983-6367 • Fax: 740/983-4703

Website: www.ashvilleohio.gov



Long & Station Street (south)





Ashville, Ohio



Village of Ashville

P.O. Box 195

200 East Station Street

Ashville, OH 43103

Office: 740/983-6367 • Fax: 740/983-4703

Website: www.ashvilleohio.gov

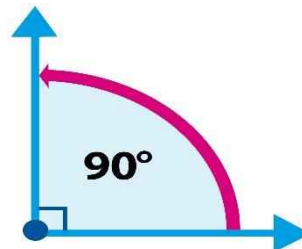


Project

Issue

Every 90° Curb Cut on the Westside of Long Street

Resolution:
All have to be replaced.





Ashville, Ohio



Village of Ashville

P.O. Box 195

200 East Station Street

Ashville, OH 43103

Office: 740/983-6367 • Fax: 740/983-4703

Website: www.ashvilleohio.gov



Station	Milled Surface Elevations			Proposed Elevations			Difference +1.5"		
	Edge of Pavement Left	Centerline	Edge of Pavement Right	Edge of Pavement Left	Centerline	Edge of Pavement Right	Edge of Pavement Left	Centerline	Edge of Pavement Right
84+00.00	699.18	699.37	699.07	699.29	699.54	699.25	0.01	-0.04	-0.05
84+50.00	700.34	700.62	700.35	700.52	700.76	700.41	-0.06	-0.02	-0.07
85+00.00	701.54	701.87	701.56	701.77	702.00	701.69	-0.11	0.00	0.00
85+50.00	702.80	703.12	702.79		703.26	702.96		-0.02	-0.04
86+00.00		704.33	703.96		704.46	704.09		-0.01	-0.01
86+50.00	704.48	705.02	704.39	704.60	705.10	704.58	0.01	0.04	-0.06
87+00.00	704.78	705.29	704.68	704.87	705.45	704.72	0.03	-0.04	0.08
87+50.00	704.82	705.44	704.68	705.04	705.56	704.85	-0.10	0.00	-0.05
88+00.00	705.01	705.58	704.84	705.14	705.72	704.98	-0.01	-0.01	-0.01
88+50.00	705.17	705.74	704.98	705.28	705.89	705.11	0.02	-0.03	0.00
89+00.00	705.29	705.88	705.10	705.45	706.05	705.34	-0.04	-0.05	-0.12
89+50.00	705.76	706.00	705.46		706.22			-0.09	
90+00.00	705.73	706.12	705.43	705.87	706.28	705.60	-0.01	-0.03	-0.05
90+50.00	705.95	706.33	705.70	706.07	706.50	705.80	0.01	-0.04	0.02
91+00.00	706.08	706.60	705.93	706.20	706.77	706.00	0.00	-0.05	0.06
91+50.00	706.30	706.80	706.26	706.40	706.98	706.39	0.02	-0.05	0.00
92+00.00	706.57	707.02	706.42	706.77	707.15	706.65	-0.07	0.00	-0.11
92+50.00	706.69	707.23	706.72	707.00	707.36		-0.08	0.00	
93+00.00	706.68	707.41	706.92	706.73	707.53	707.09	0.08	0.00	-0.04
93+50.00	707.04	707.60	707.16	707.35	707.75	707.24	-0.19	-0.02	0.04
94+00.00	707.50	707.77		707.61	707.91		0.01	-0.01	
94+50.00	707.82	707.98	707.57	707.89	708.10	707.77	0.06	0.00	-0.07

Station	Difference +1.5" (Fractional)		
	Edge of Pavement Left	Centerline	Edge of Pavement Right
84+00.00	1/8	-4/8	-5/8
84+50.00	-5/8	-2/8	7/8
85+00.00	-13/8	0	0
85+50.00	0	-2/8	-4/8
86+00.00	0	-1/8	-1/8
86+50.00	1/8	4/8	-6/8
87+00.00	3/8	-4/8	1
87+50.00	-11/8	0	-5/8
88+00.00	-1/8	-1/8	-1/8
88+50.00	2/8	-3/8	0
89+00.00	-4/8	-5/8	-13/8
89+50.00	0	-11/8	0
90+00.00	-1/8	-3/8	-5/8
90+50.00	1/8	-4/8	2/8
91+00.00	0	-5/8	5/8
91+50.00	2/8	-5/8	0
92+00.00	-7/8	0	-12/8
92+50.00	-22/8	0	0
93+00.00	7/8	0	-4/8
93+50.00	-22/8	-2/8	4/8
94+00.00	1/8	-1/8	0
94+50.00	6/8	0	-7/8

Resolution: Each will be evaluated based upon the criteria-will it work

Curb Elevations





Ashville, Ohio



Village of Ashville

P.O. Box 195

200 East Station Street

Ashville, OH 43103

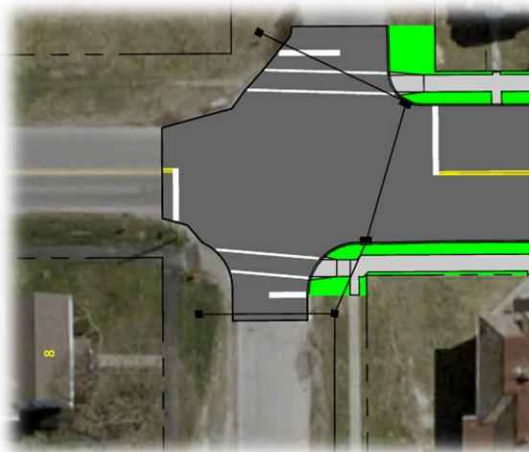
Office: 740/983-6367 • Fax: 740/983-4703

Website: www.ashvilleohio.gov



Project

Issue



Station Street Curb Cut





Ashville, Ohio



Village of Ashville

P.O. Box 195

200 East Station Street

Ashville, OH 43103

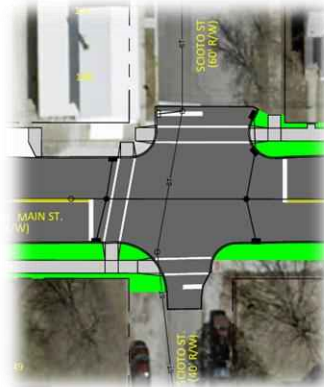
Office: 740/983-6367 • Fax: 740/983-4703

Website: www.ashvilleohio.gov



Project

Issue



Scioto Street Curb Cut





Ashville, Ohio



Village of Ashville

P.O. Box 195

200 East Station Street

Ashville, OH 43103

Office: 740/983-6367 • Fax: 740/983-4703

Website: www.ashvilleohio.gov



Project

Issue

Scioto Street Curb Cut





Ashville, Ohio



Village of Ashville

P.O. Box 195

200 East Station Street

Ashville, OH 43103

Office: 740/983-6367 • Fax: 740/983-4703

Website: www.ashvilleohio.gov





Ashville, Ohio



Village of Ashville

P.O. Box 195

200 East Station Street

Ashville, OH 43103

Office: 740/983-6367 • Fax: 740/983-4703

Website: www.ashvilleohio.gov



Project

Issue



- Curb issue involving drive and alley
- Curb issue involving curb in front of property
- Curb issue width in front of property
- Basement drainage
- Sanitary connection
- New sidewalk being removed

Calls & Emails from Residents & Businesses



Resolution: Each will be evaluated on a case by case basis's

Criteria: ODOT Standard, Location History & Cost



Ashville, Ohio



Village of Ashville

P.O. Box 195

200 East Station Street

Ashville, OH 43103

Office: 740/983-6367 • Fax: 740/983-4703

Website: www.ashvilleohio.gov





Ashville, Ohio



Village of Ashville

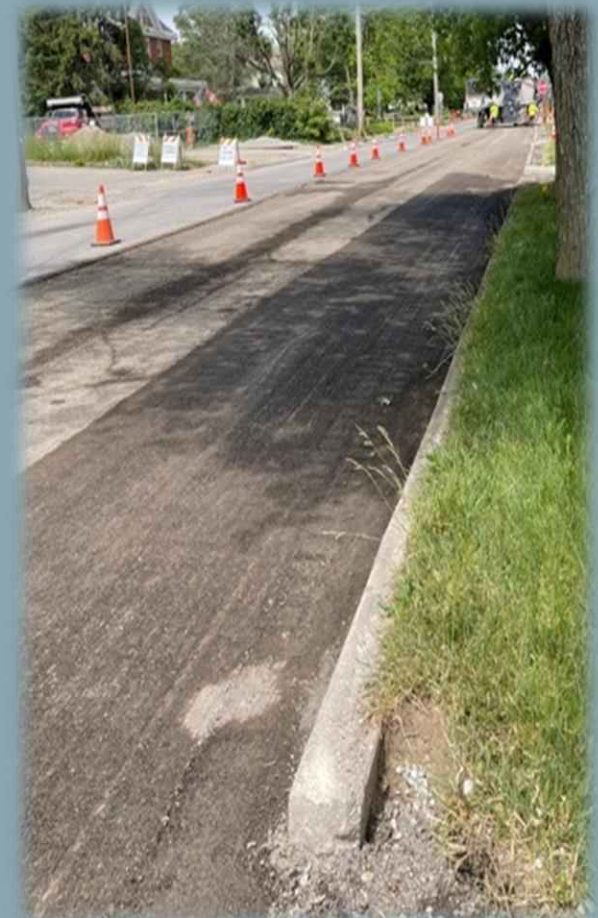
P.O. Box 195

200 East Station Street

Ashville, OH 43103

Office: 740/983-6367 • Fax: 740/983-4703

Website: www.ashvilleohio.gov





Ashville, Ohio



Village of Ashville

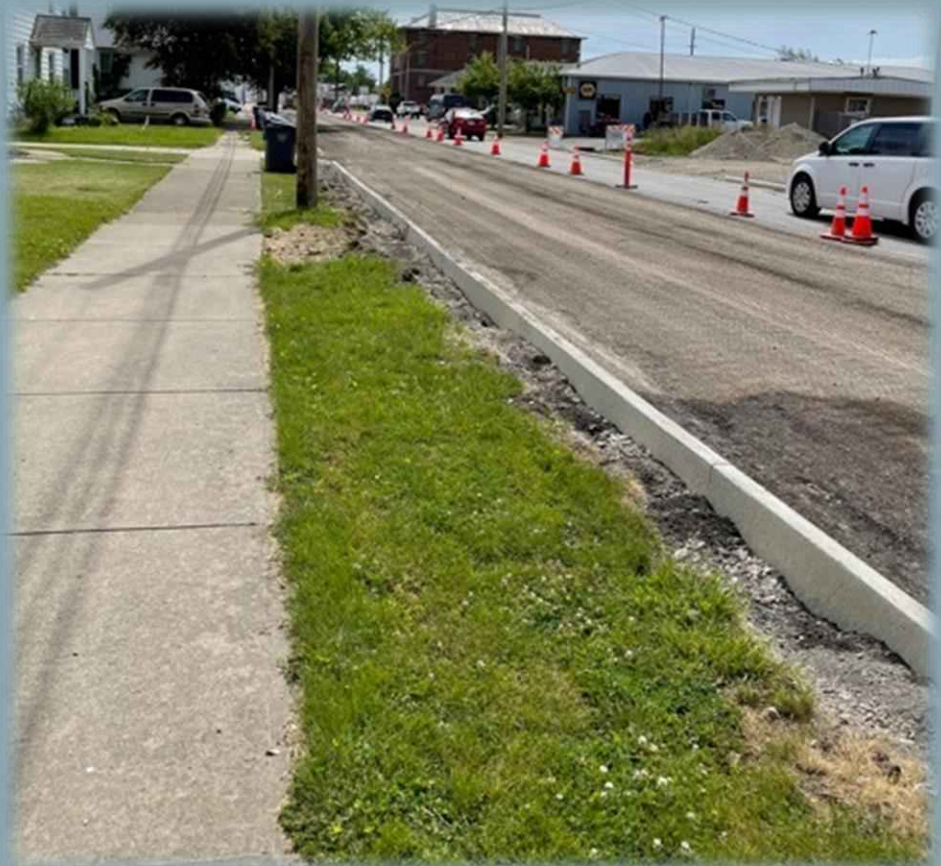
P.O. Box 195

200 East Station Street

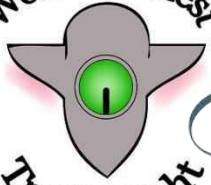
Ashville, OH 43103

Office: 740/983-6367 • Fax: 740/983-4703

Website: www.ashvilleohio.gov



World's Oldest
Traffic Light



Ashville, Ohio



Village of Ashville

P.O. Box 195

200 East Station Street

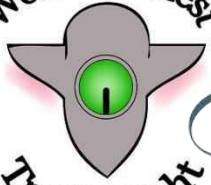
Ashville, OH 43103

Office: 740/983-6367 • Fax: 740/983-4703

Website: www.ashvilleohio.gov



World's Oldest
Traffic Light



Ashville, Ohio



Village of Ashville

P.O. Box 195

200 East Station Street

Ashville, OH 43103

Office: 740/983-6367 • Fax: 740/983-4703

Website: www.ashvilleohio.gov

