



Ashville, Ohio



Village of Ashville

P.O. Box 195

200 East Station Street

Ashville, OH 43103

Office: 740/983-6367 • Fax: 740/983-4703

Website: www.ashvilleohio.gov



Welcome
to the August 9th
Ashville

Committee of the Whole



Ashville, Ohio



Village of Ashville

P.O. Box 195

200 East Station Street

Ashville, OH 43103

Office: 740/983-6367 • Fax: 740/983-4703

Website: www.ashvilleohio.gov



State Route 316 Resurface, Sidewalk (ADA), Stormwater Improvement Project



Ashville, Ohio

www.ashvilleohio.gov

Village of Ashville Service Department

200 East Station Street

Ashville, OH 43103

Phone: (740) 983-6367

Charles K. Wise,

Mayor of Ashville



<http://www.ashvilleohio.gov/index.php/16-village-of-ashville/264-state-route-316-resurface-long-sidewalk-ada-stormwater-improvement-project>





Ashville, Ohio



Village of Ashville

P.O. Box 195

200 East Station Street

Ashville, OH 43103

Office: 740/983-6367 • Fax: 740/983-4703

Website: www.ashvilleohio.gov



Project

Issue



- Curb issue involving drive and alley
- Curb issue involving curb in front of property
- Curb issue width in front of property
- Basement drainage
- Sanitary connection
- New sidewalk being removed

Calls & Emails from Residents & Businesses

Resolution: Each will be evaluated on a case by case basis's

Criteria: ODOT Standard, Location History & Cost





Ashville, Ohio



Village of Ashville

P.O. Box 195

200 East Station Street

Ashville, OH 43103

Office: 740/983-6367 • Fax: 740/983-4703

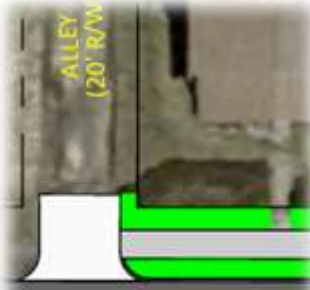
Website: www.ashvilleohio.gov



Ortho

Project

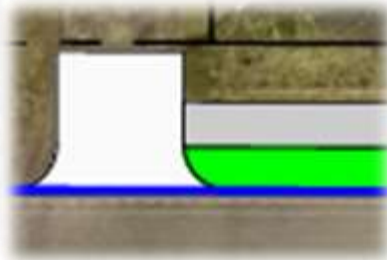
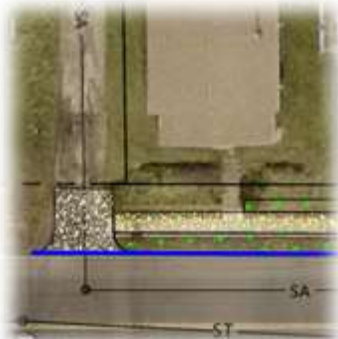
Issue



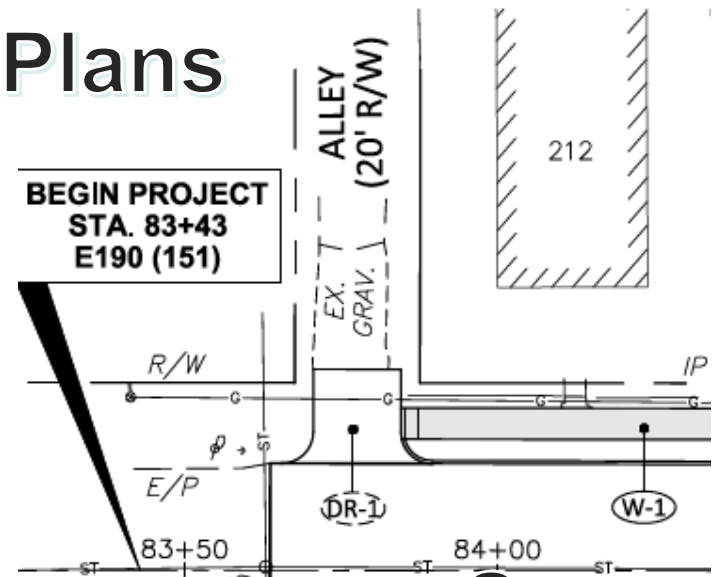
X 212 West Main Street **✓**



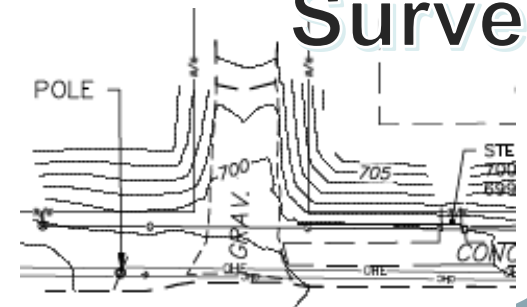
OPWC Exhibit



Plans



Survey





Ashville, Ohio



Village of Ashville

P.O. Box 195

200 East Station Street

Ashville, OH 43103

Office: 740/983-6367 • Fax: 740/983-4703

Website: www.ashvilleohio.gov



Project

Issue

X 212 West Main Street **✓**



Does not like alley approach or finished product



Ashville, Ohio



Village of Ashville

P.O. Box 195

200 East Station Street

Ashville, OH 43103

Office: 740/983-6367 • Fax: 740/983-4703

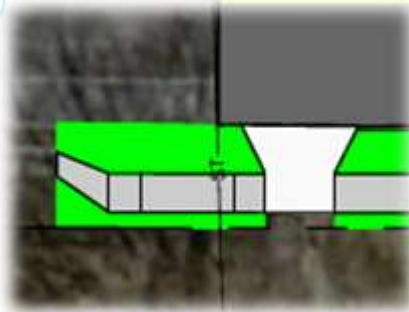
Website: www.ashvilleohio.gov



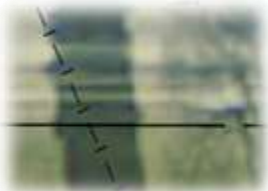
Ortho

Project

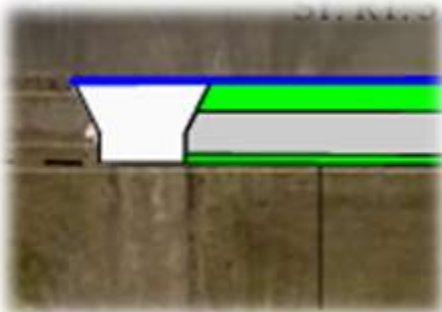
Issue



X 213 West Main Street **✓**

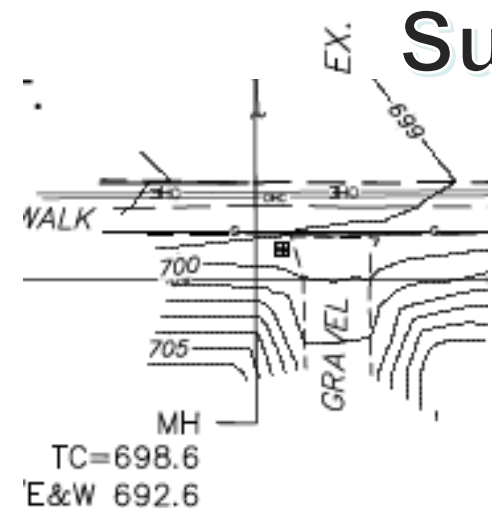
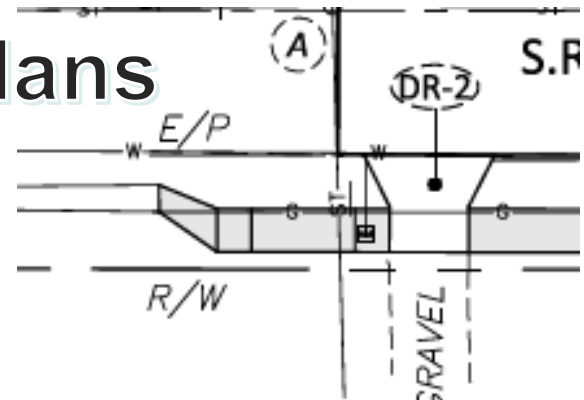


OPWC
Exhibit



Concern about hill – retention wall

Plans



Survey



Ashville, Ohio



Village of Ashville

P.O. Box 195

200 East Station Street

Ashville, OH 43103

Office: 740/983-6367 • Fax: 740/983-4703

Website: www.ashvilleohio.gov



X 213 West Main Street **✓**



Concerned about mowing hill and retaining wall



Ashville, Ohio



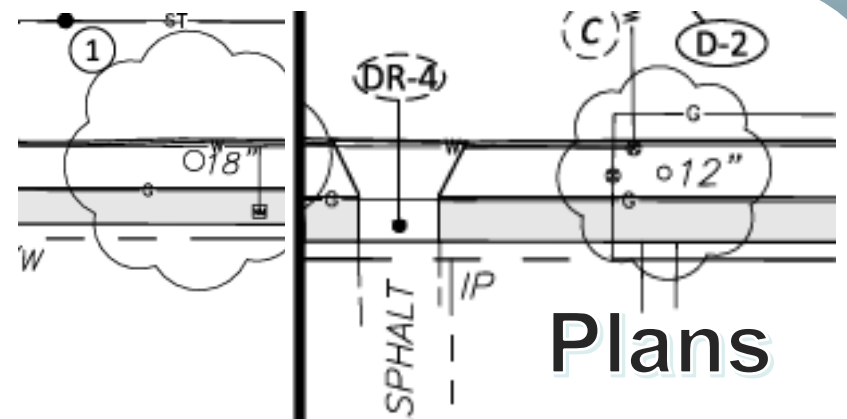
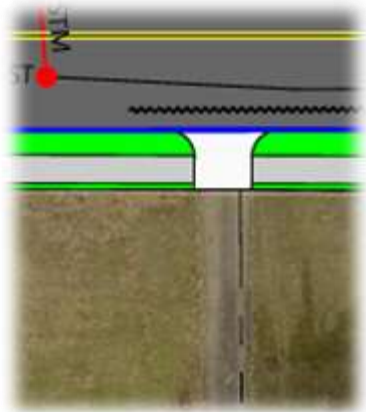
Village of Ashville
P.O. Box 195
200 East Station Street
Ashville, OH 43103
Office: 740/983-6367 • Fax: 740/983-4703
Website: www.ashvilleohio.gov



Ortho

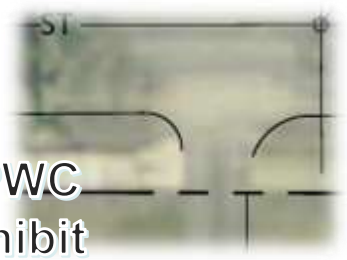
Project

Issue

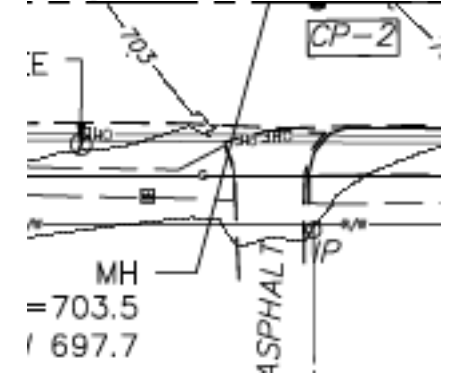
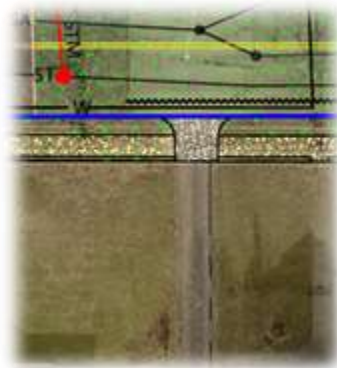
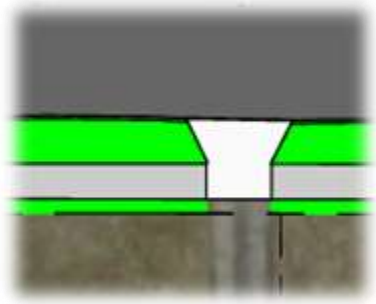


Plans

X 195 West Main Street **✓**



OPWC
Exhibit



Survey

Does not like driveway approach, concerned about mowing hill



Ashville, Ohio



Village of Ashville

P.O. Box 195

200 East Station Street

Ashville, OH 43103

Office: 740/983-6367 • Fax: 740/983-4703

Website: www.ashvilleohio.gov



Project

Issue



X 195 West Main Street ✓



Does not like driveway approach, concerned about mowing hill



Ashville, Ohio



Village of Ashville

P.O. Box 195

200 East Station Street

Ashville, OH 43103

Office: 740/983-6367 • Fax: 740/983-4703

Website: www.ashvilleohio.gov



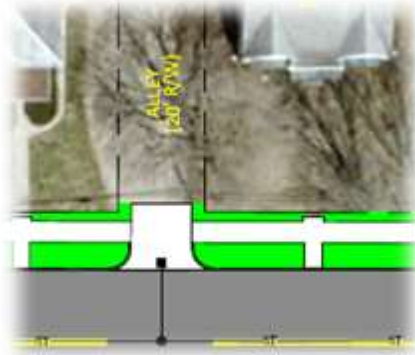
Ortho

Project

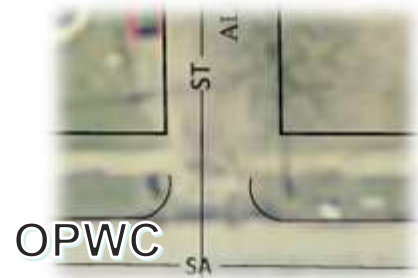
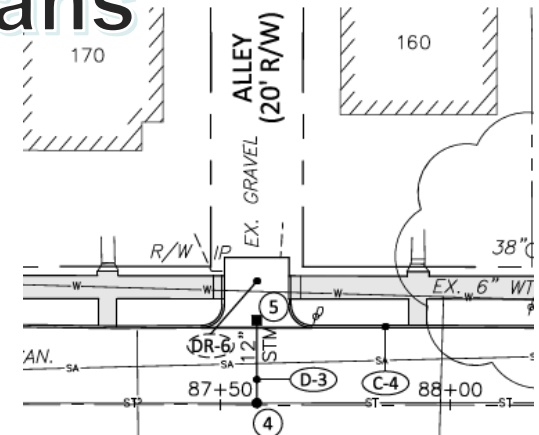
Issue



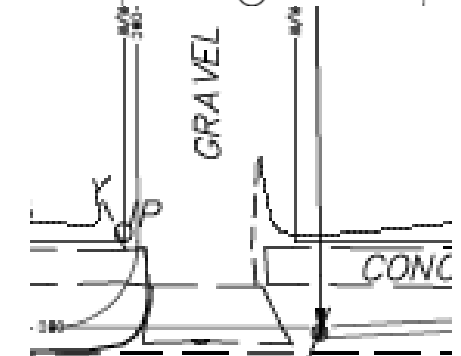
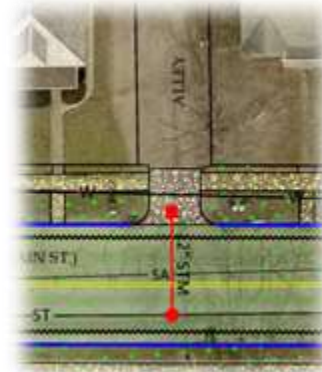
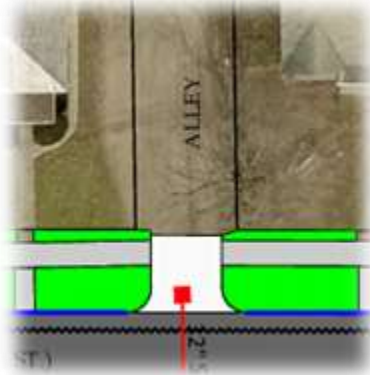
160 West Main Street



Plans



OPWC Exhibit



Does not like location of alley approach

Survey

C/L SURVEY



Ashville, Ohio



Village of Ashville

P.O. Box 195

200 East Station Street

Ashville, OH 43103

Office: 740/983-6367 • Fax: 740/983-4703

Website: www.ashvilleohio.gov



Project

Issue



X 160 West Main Street **✓**



Does not like location of alley approach



Ashville, Ohio



Village of Ashville

P.O. Box 195

200 East Station Street

Ashville, OH 43103

Office: 740/983-6367 • Fax: 740/983-4703

Website: www.ashvilleohio.gov



Project

Issue

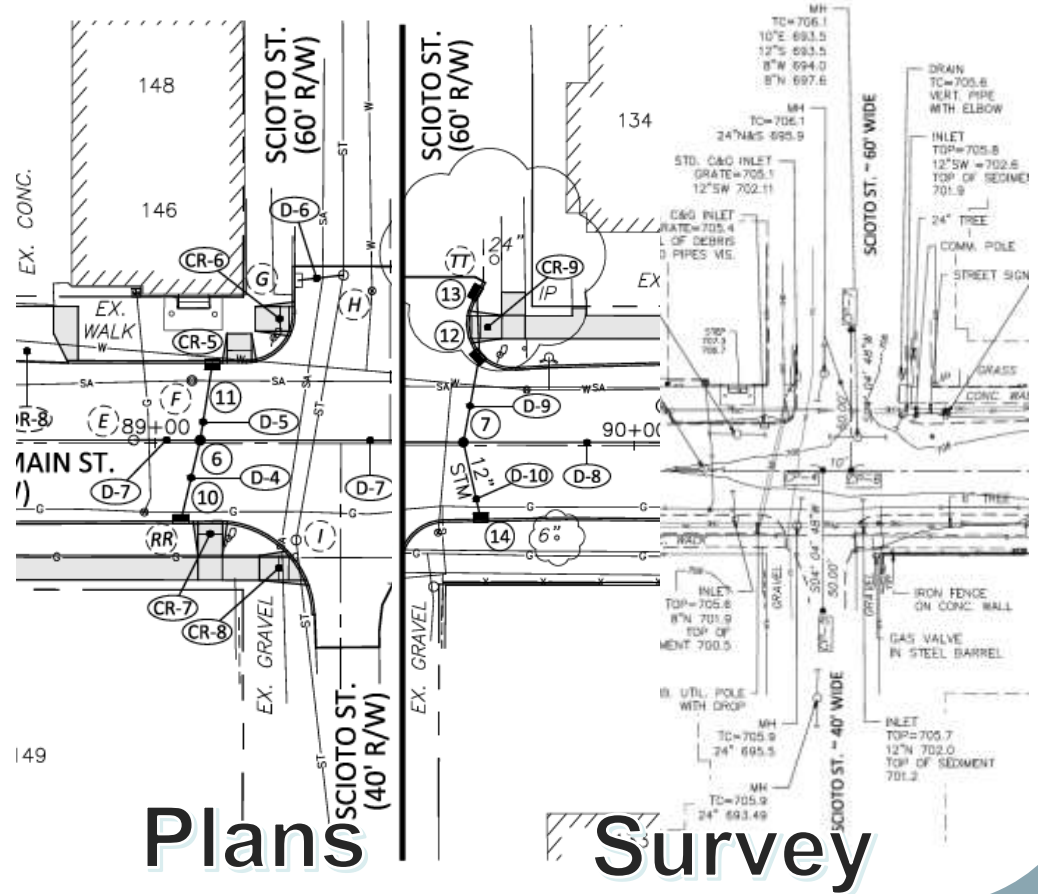
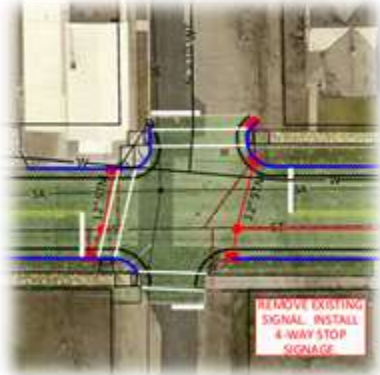


Scioto Street Curb Cut

Ortho



OPWC Exhibit



Plans

Survey



Ashville, Ohio



Village of Ashville

P.O. Box 195

200 East Station Street

Ashville, OH 43103

Office: 740/983-6367 • Fax: 740/983-4703

Website: www.ashvilleohio.gov



Project

Issue



PHOTOS

Scioto Street Curb Cut





Ashville, Ohio



Village of Ashville

P.O. Box 195

200 East Station Street

Ashville, OH 43103

Office: 740/983-6367 • Fax: 740/983-4703

Website: www.ashvilleohio.gov



July 1, 2021





Ashville, Ohio



Village of Ashville

P.O. Box 195

200 East Station Street

Ashville, OH 43103

Office: 740/983-6367 • Fax: 740/983-4703

Website: www.ashvilleohio.gov





Ashville, Ohio



Village of Ashville

P.O. Box 195

200 East Station Street

Ashville, OH 43103

Office: 740/983-6367 • Fax: 740/983-4703

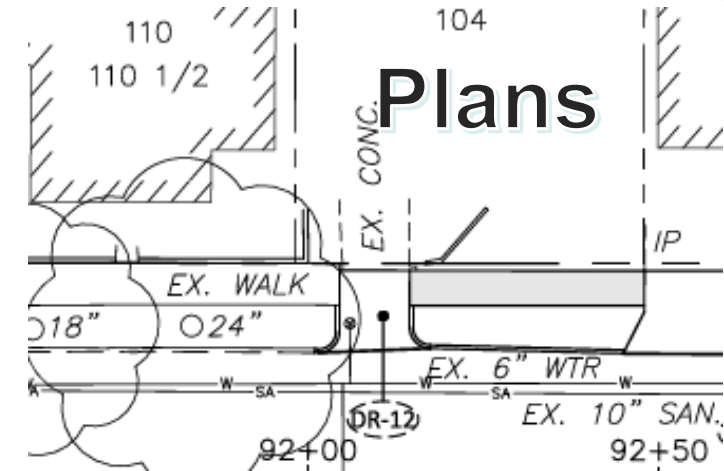
Website: www.ashvilleohio.gov



Project

Issue

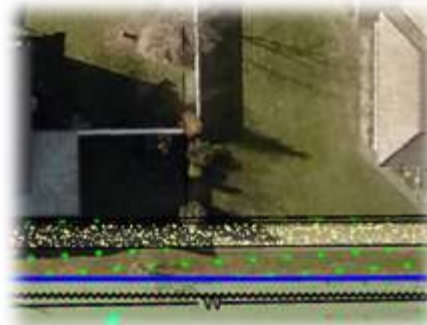
Ortho



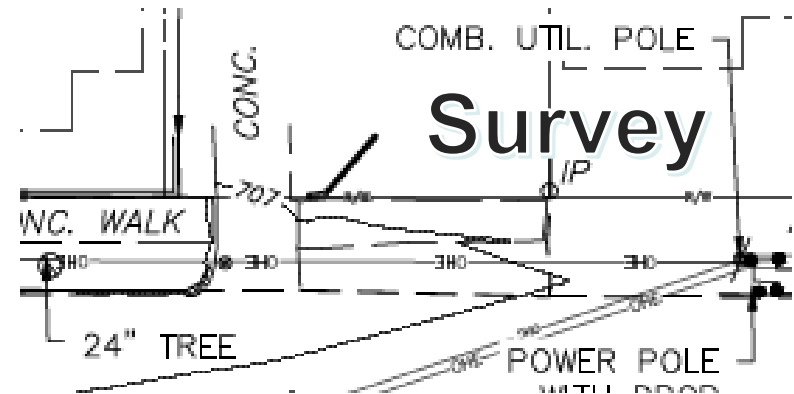
X 104 West Main Street **✓**



OPWC Exhibit



Does not like location of alley approach





Ashville, Ohio



Village of Ashville

P.O. Box 195

200 East Station Street

Ashville, OH 43103

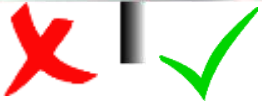
Office: 740/983-6367 • Fax: 740/983-4703

Website: www.ashvilleohio.gov



Project

Issue



104 West Main Street



Want curb removed





Ashville, Ohio



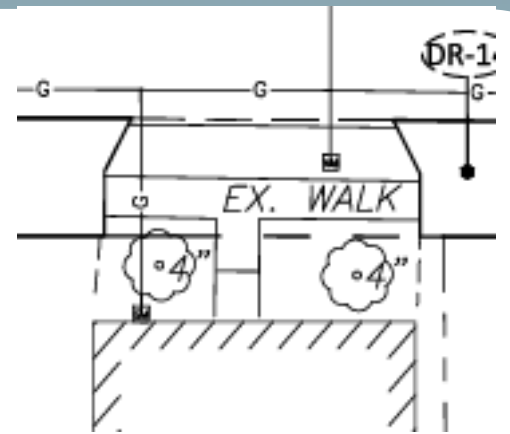
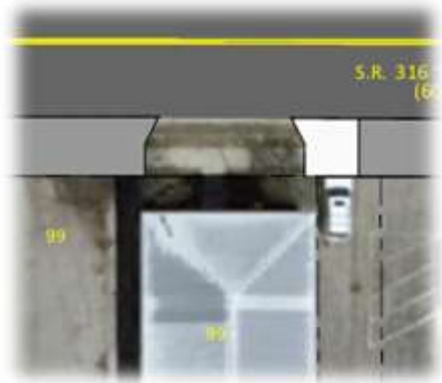
Village of Ashville
P.O. Box 195
200 East Station Street
Ashville, OH 43103
Office: 740/983-6367 • Fax: 740/983-4703
Website: www.ashvilleohio.gov



Project

Ortho

Issue

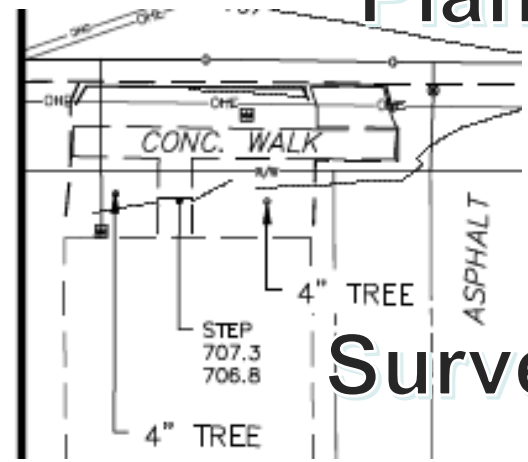
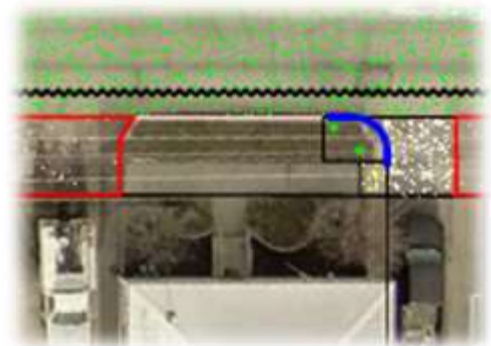


99 West Main Street (NAPA)

Plans



OPWC Exhibit



Survey



Ashville, Ohio



Village of Ashville

P.O. Box 195

200 East Station Street

Ashville, OH 43103

Office: 740/983-6367 • Fax: 740/983-4703

Website: www.ashvilleohio.gov



Project

Issue

X ✓

99 West Main Street (NAPA)





Ashville, Ohio



Village of Ashville

P.O. Box 195

200 East Station Street

Ashville, OH 43103

Office: 740/983-6367 • Fax: 740/983-4703

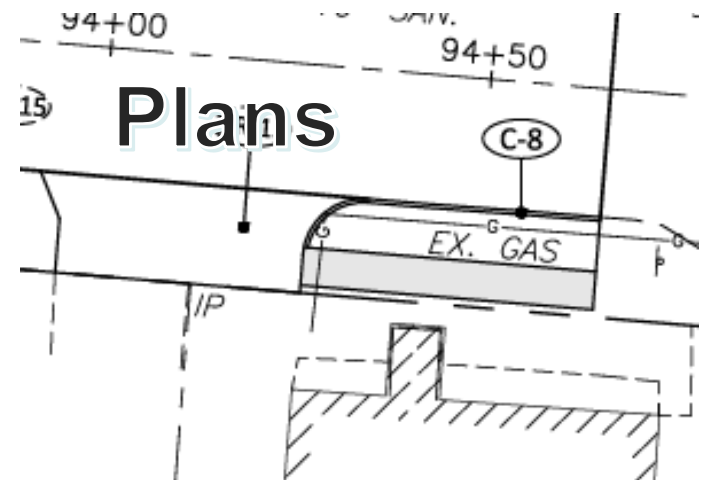
Website: www.ashvilleohio.gov



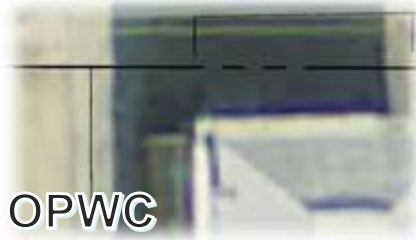
Project

Issue

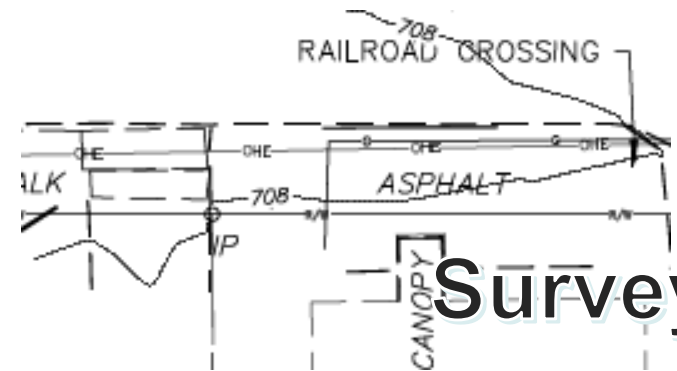
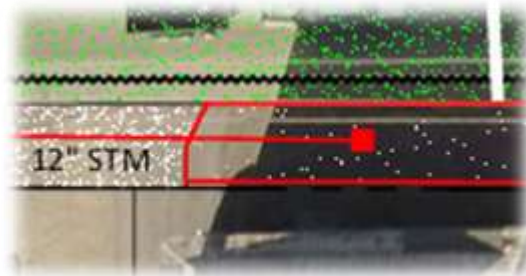
Ortho



73 West Main Street



OPWC Exhibit



Survey



Ashville, Ohio



Village of Ashville

P.O. Box 195

200 East Station Street

Ashville, OH 43103

Office: 740/983-6367 • Fax: 740/983-4703

Website: www.ashvilleohio.gov



Project

Issue



73 West Main Street



Did not like curb cut for drive/alley





Ashville, Ohio



Village of Ashville

P.O. Box 195

200 East Station Street

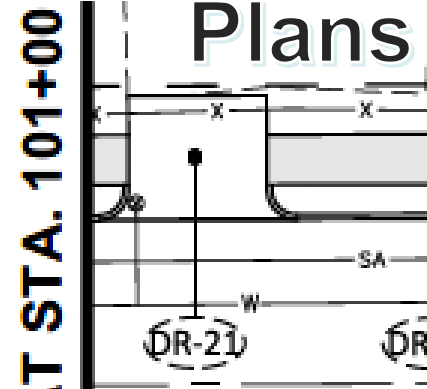
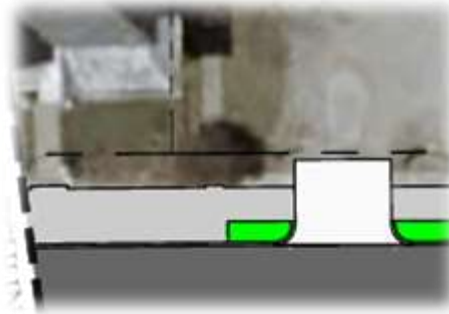
Ashville, OH 43103

Office: 740/983-6367 • Fax: 740/983-4703

Website: www.ashvilleohio.gov



Ortho



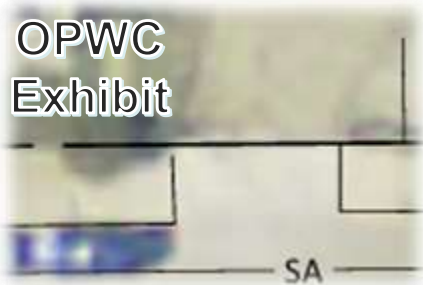
Project

Issue

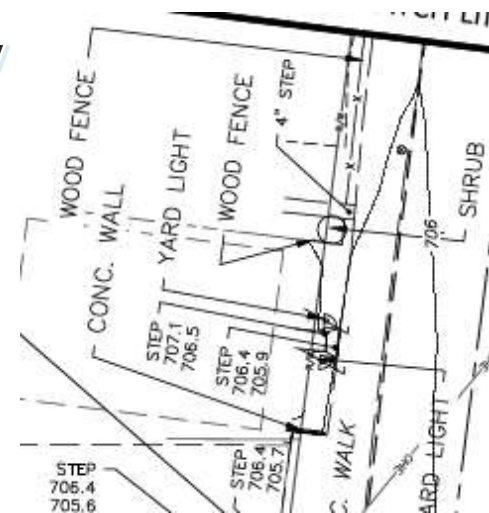
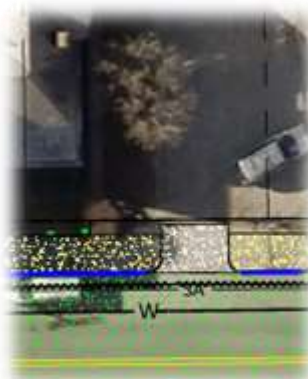


15 Long Street

OPWC Exhibit



Survey



Did not like curb cut for driveway



Ashville, Ohio



Village of Ashville

P.O. Box 195

200 East Station Street

Ashville, OH 43103

Office: 740/983-6367 • Fax: 740/983-4703

Website: www.ashvilleohio.gov



Did not like curb cut for driveway



Ashville, Ohio



Village of Ashville

P.O. Box 195

200 East Station Street

Ashville, OH 43103

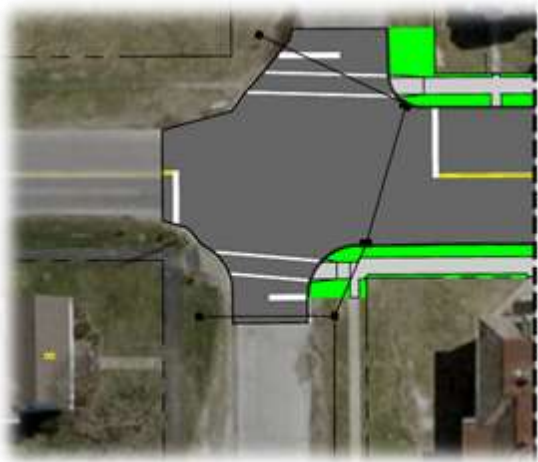
Office: 740/983-6367 • Fax: 740/983-4703

Website: www.ashvilleohio.gov



Project

Issue



Station Street Curb Cut





Ashville, Ohio



Village of Ashville

P.O. Box 195

200 East Station Street

Ashville, OH 43103

Office: 740/983-6367 • Fax: 740/983-4703

Website: www.ashvilleohio.gov





Ashville, Ohio



Village of Ashville

P.O. Box 195

200 East Station Street

Ashville, OH 43103

Office: 740/983-6367 • Fax: 740/983-4703

Website: www.ashvilleohio.gov



July 23, 2021

Long Street South to North





Ashville, Ohio



Village of Ashville

P.O. Box 195

200 East Station Street

Ashville, OH 43103

Office: 740/983-6367 • Fax: 740/983-4703

Website: www.ashvilleohio.gov



West Main Street Sidewalks

June 24, 2021





Ashville, Ohio



Village of Ashville

P.O. Box 195

200 East Station Street

Ashville, OH 43103

Office: 740/983-6367 • Fax: 740/983-4703

Website: www.ashvilleohio.gov

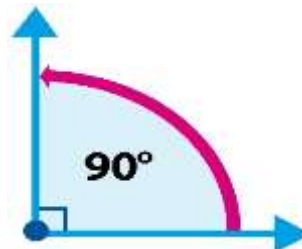


Project

Issue

Every 90° Curb Cut on the Westside of Long Street

Resolution:
All have to be replaced.





Ashville, Ohio



Village of Ashville

P.O. Box 195

200 East Station Street

Ashville, OH 43103

Office: 740/983-6367 • Fax: 740/983-4703

Website: www.ashvilleohio.gov



Station	Milled Surface Elevations			Proposed Elevations			Difference +1.5"		
	Edge of Pavement Left	Centerline	Edge of Pavement Right	Edge of Pavement Left	Centerline	Edge of Pavement Right	Edge of Pavement Left	Centerline	Edge of Pavement Right
84+00.00	699.18	699.37	699.07	699.29	699.54	699.25	0.01	-0.04	-0.05
84+50.00	700.34	700.62	700.35	700.52	700.76	700.41	-0.06	-0.02	-0.07
85+00.00	701.54	701.87	701.56	701.77	702.00	701.69	-0.11	0.00	0.00
85+50.00	702.80	703.12	702.79		703.26	702.96		-0.02	-0.04
86+00.00		704.33	703.96		704.46	704.09		-0.01	-0.01
86+50.00	704.48	705.02	704.39	704.60	705.10	704.58	0.01	0.04	-0.06
87+00.00	704.78	705.29	704.68	704.87	705.45	704.72	0.03	-0.04	0.08
87+50.00	704.82	705.44	704.68	705.04	705.56	704.85	-0.10	0.00	-0.05
88+00.00	705.01	705.58	704.84	705.14	705.72	704.98	-0.01	-0.01	-0.01
88+50.00	705.17	705.74	704.98	705.28	705.89	705.11	0.02	-0.03	0.00
89+00.00	705.29	705.88	705.10	705.45	706.05	705.34	-0.04	-0.05	-0.12
89+50.00	705.76	706.00	705.46		706.22			-0.09	
90+00.00	705.73	706.12	705.43	705.87	706.28	705.60	-0.01	-0.03	-0.05
90+50.00	705.95	706.33	705.70	706.07	706.50	705.80	0.01	-0.04	0.02
91+00.00	706.08	706.60	705.93	706.20	706.77	706.00	0.00	-0.05	0.06
91+50.00	706.30	706.80	706.26	706.40	706.98	706.39	0.02	-0.05	0.00
92+00.00	706.57	707.02	706.42	706.77	707.15	706.65	-0.07	0.00	-0.11
92+50.00	706.69	707.23	706.72	707.00	707.36		-0.18	0.00	
93+00.00	706.68	707.41	706.92	706.73	707.53	707.09	0.08	0.00	-0.04
93+50.00	707.04	707.60	707.16	707.35	707.75	707.24	-0.19	-0.02	0.04
94+00.00	707.50	707.77		707.61	707.91		0.01	-0.01	
94+50.00	707.82	707.98	707.57	707.89	708.10	707.77	0.06	0.00	-0.07

Station	Difference +1.5" (Fractional)		
	Edge of Pavement Left	Centerline	Edge of Pavement Right
84+00.00	1/8	-4/8	-5/8
84+50.00	-5/8	-2/8	7/8
85+00.00	-1 3/8	0	0
85+50.00	0	-2/8	-4/8
86+00.00	0	-1/8	-1/8
86+50.00	1/8	4/8	-6/8
87+00.00	3/8	-4/8	1
87+50.00	-1 1/8	0	-5/8
88+00.00	-1/8	-1/8	-1/8
88+50.00	2/8	-3/8	0
89+00.00	-4/8	-5/8	-1 3/8
89+50.00	0	-1 1/8	0
90+00.00	-1/8	-3/8	-5/8
90+50.00	1/8	-4/8	2/8
91+00.00	0	-5/8	5/8
91+50.00	2/8	-5/8	0
92+00.00	-7/8	0	-1 2/8
92+50.00	-2 2/8	0	0
93+00.00	7/8	0	-4/8
93+50.00	-2 2/8	-2/8	4/8
94+00.00	1/8	-1/8	0
94+50.00	6/8	0	-7/8

Resolution: Each will be evaluated based upon the criteria-will it work

Curb Elevations





Ashville, Ohio



Village of Ashville

P.O. Box 195

200 East Station Street

Ashville, OH 43103

Office: 740/983-6367 • Fax: 740/983-4703

Website: www.ashvilleohio.gov



June 25, 2021



Long Street South to North

