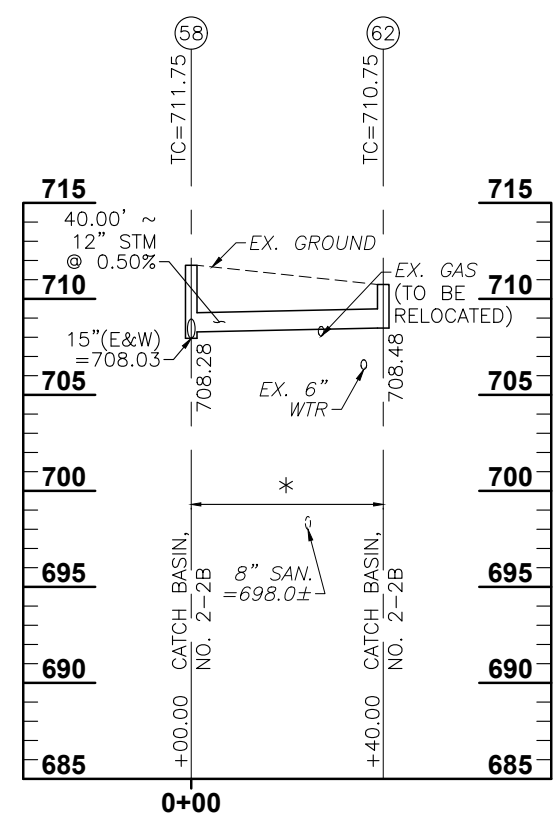
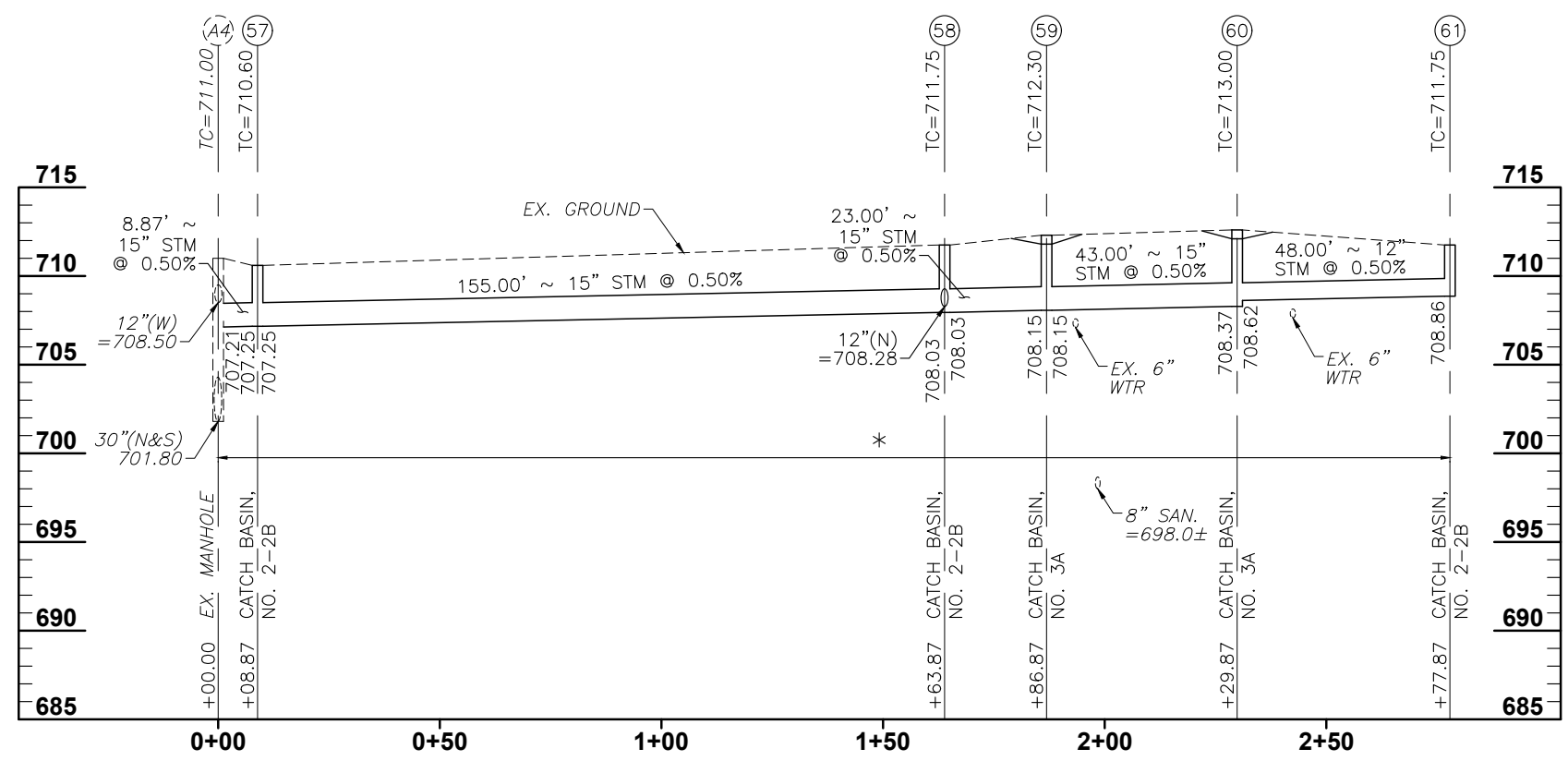
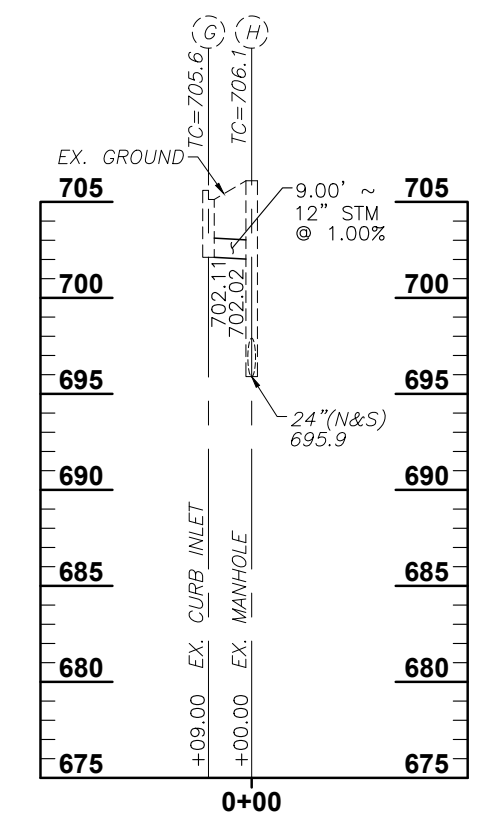
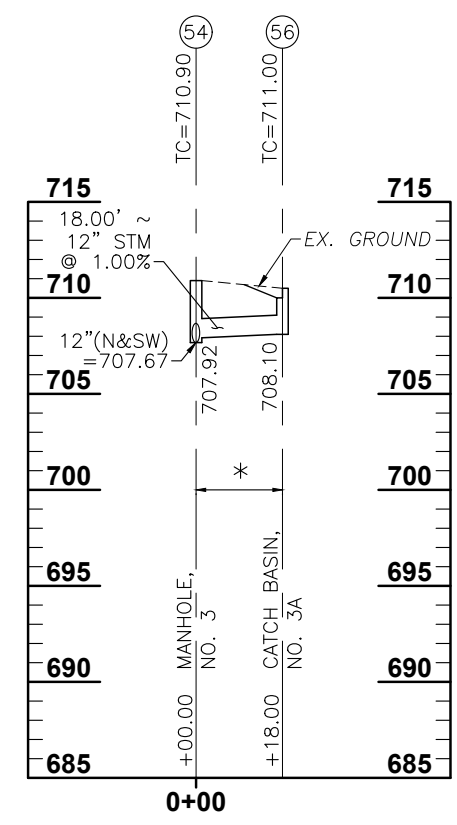
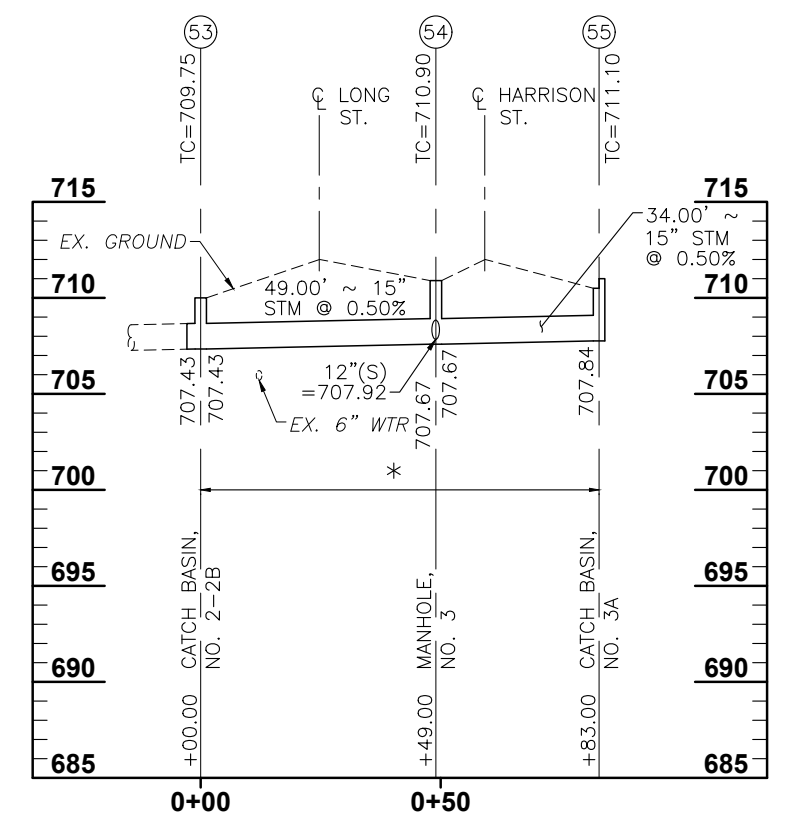
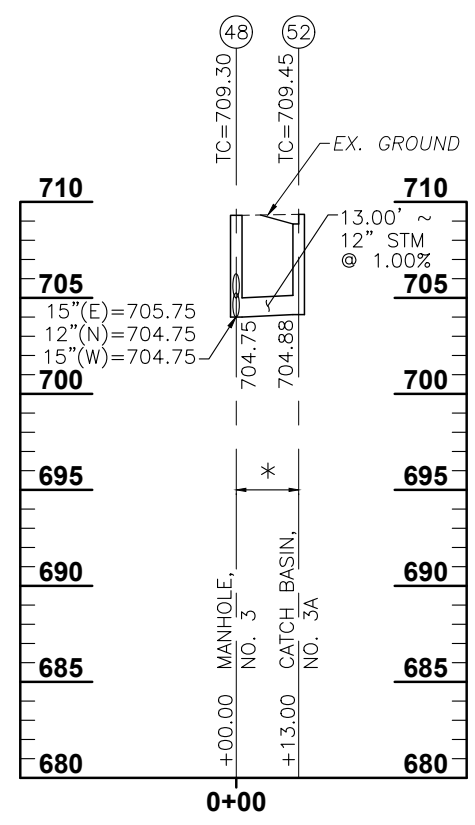


CALCULATED
CHECKED

STORM SEWER PROFILES

PIC-316 - 13.05-13.68
PART 2

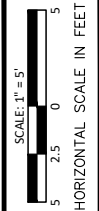


NOTE
ITEM 611, CONDUIT TYPE B, AS PER PLAN;
ALL CONDUIT 12", 15" AND 18" SHALL BE
TYPE B, 706.02 OR 707.33.

* = ALL STORM SEWER SHALL BE TYPE B
CONDUIT, REINFORCED CONCRETE
CIRCULAR PIPE, 706.02

NOTE:
MAINTAIN MINIMUM OF 10'-0" HORIZONTAL
(OUT-TO-OUT) AND 1'-6" VERTICAL
CLEARANCE FROM ALL WATER LINES.

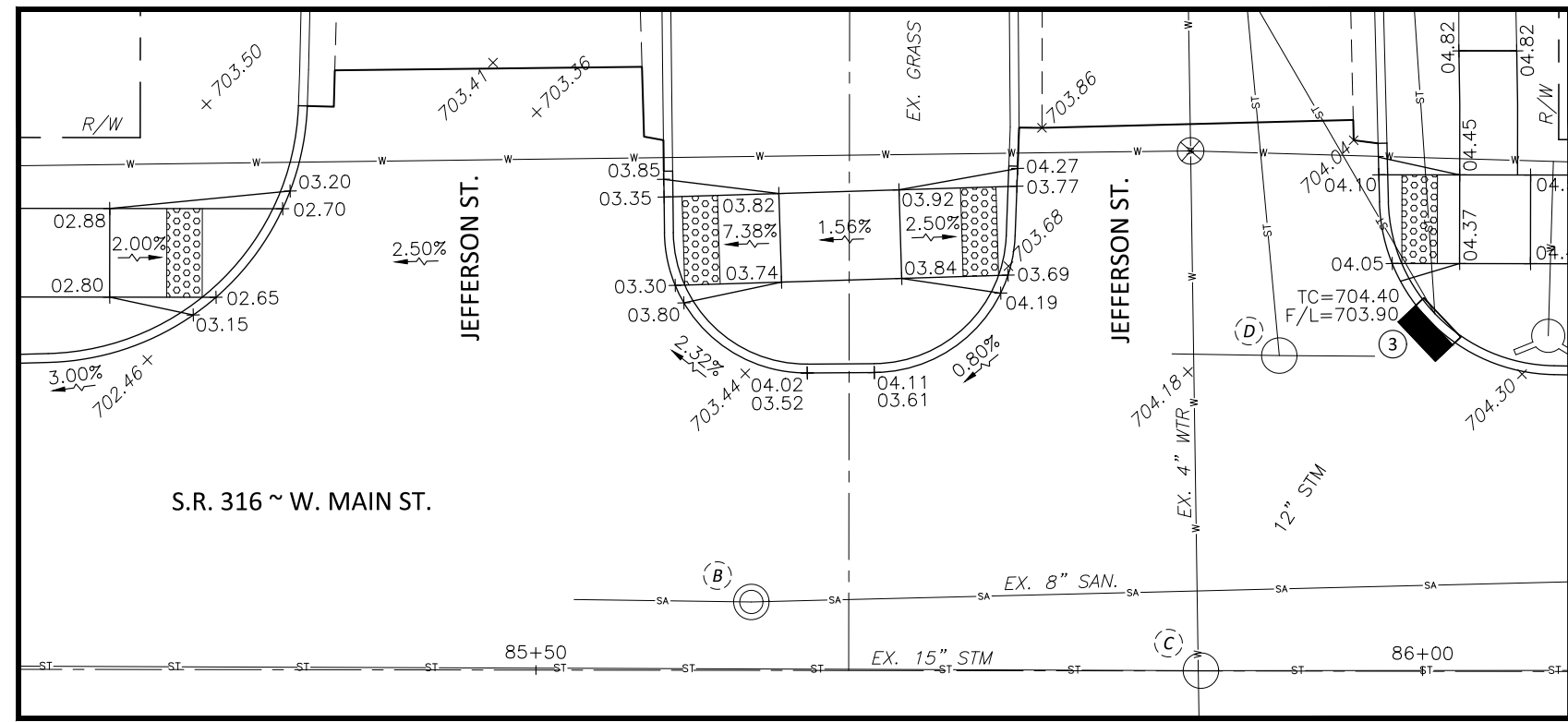
SCALE: HORIZ: 1" = 20'
VERT: 1" = 5'



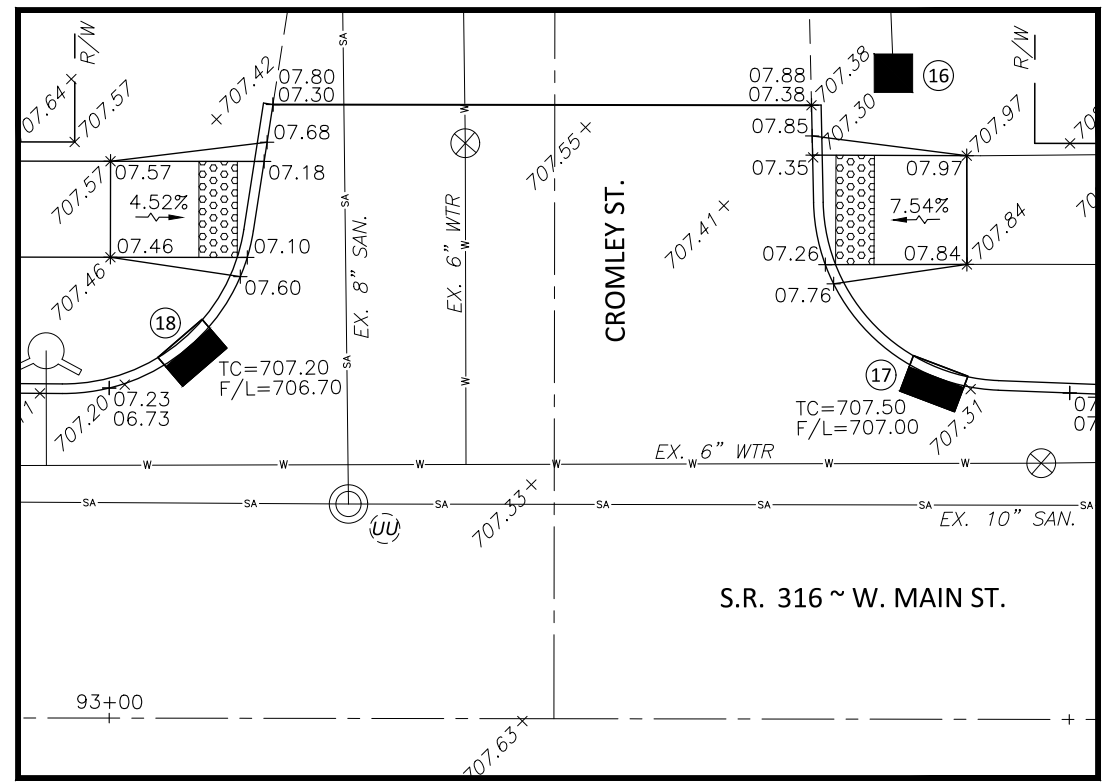
CALCULATED
CHECKED

INTERSECTION DETAILS

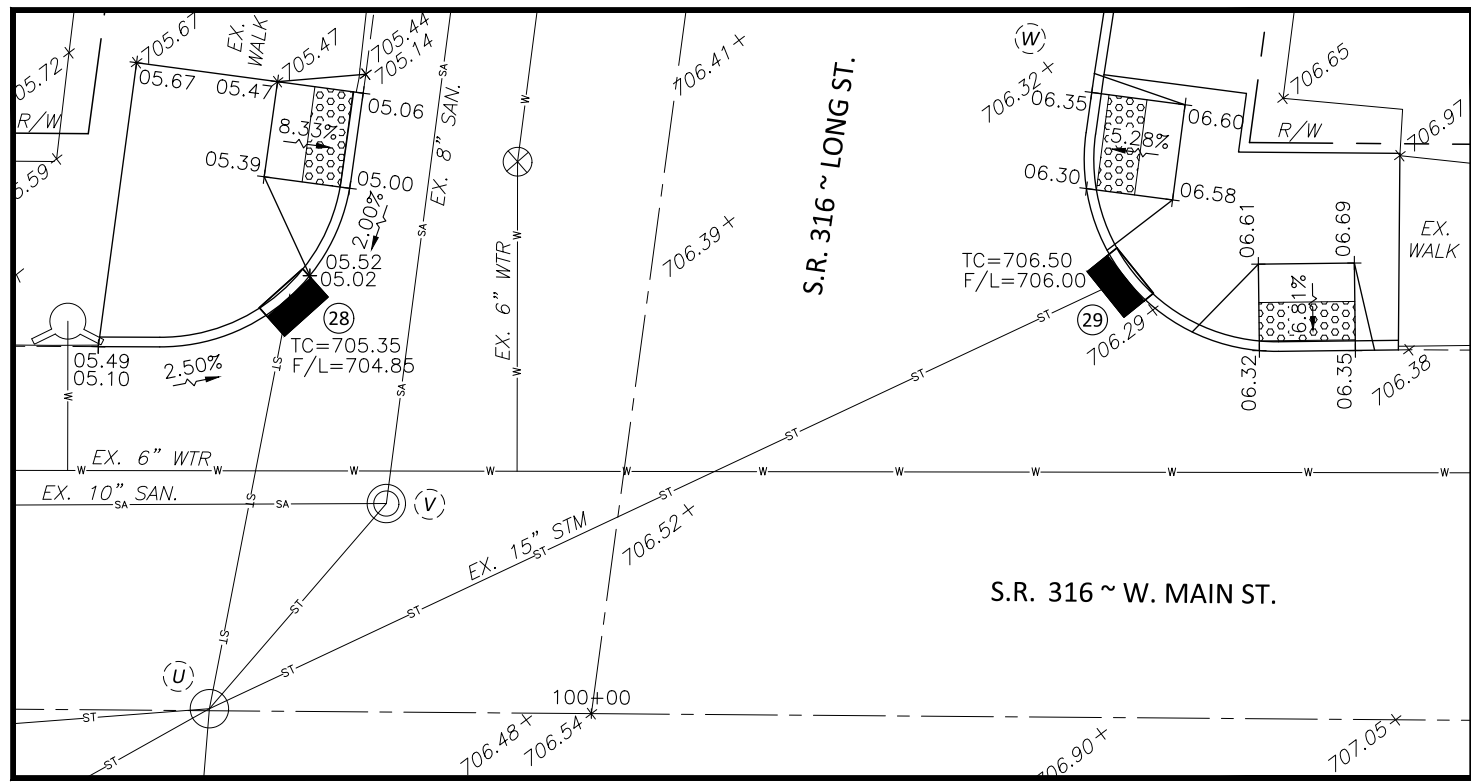
PIC-316 - 13.05-13.68
PART 2



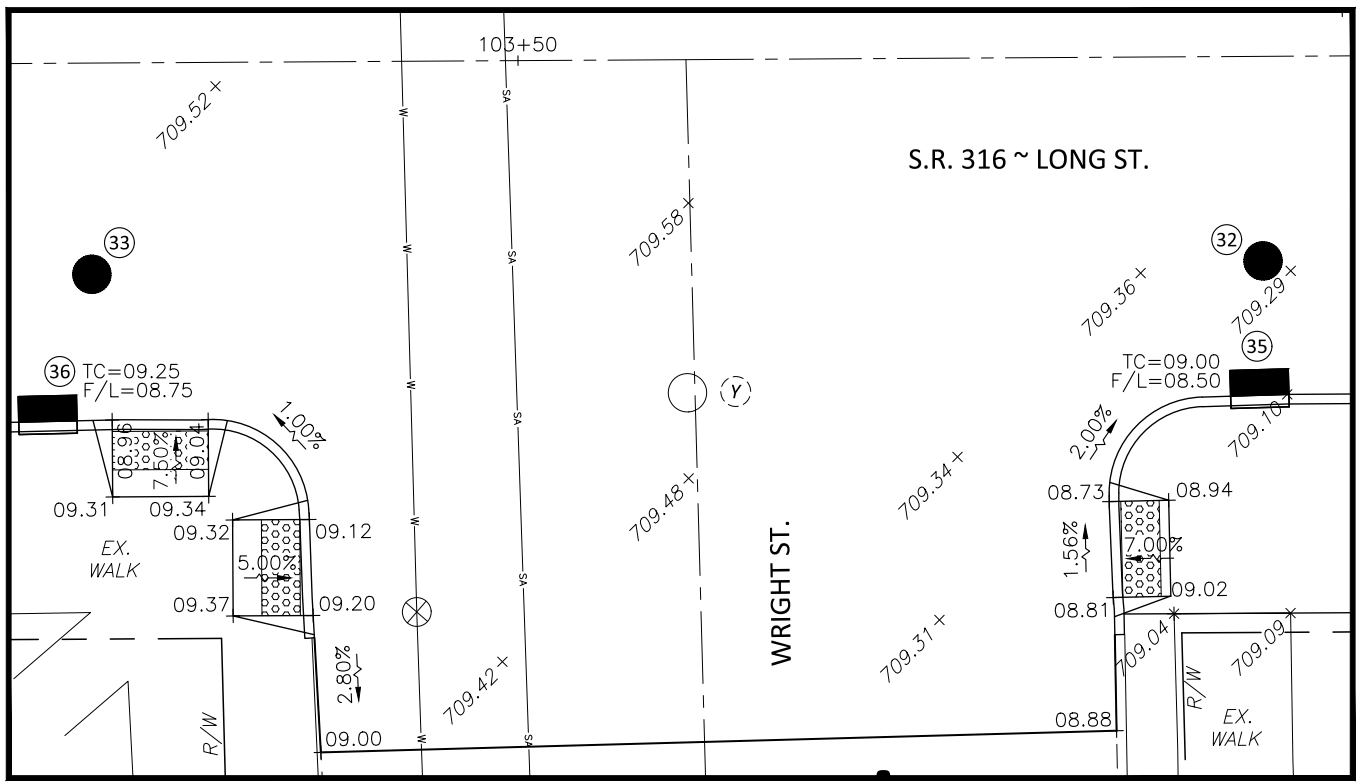
JEFFERSON AVENUE AND S.R. 316 (W. MAIN STREET)



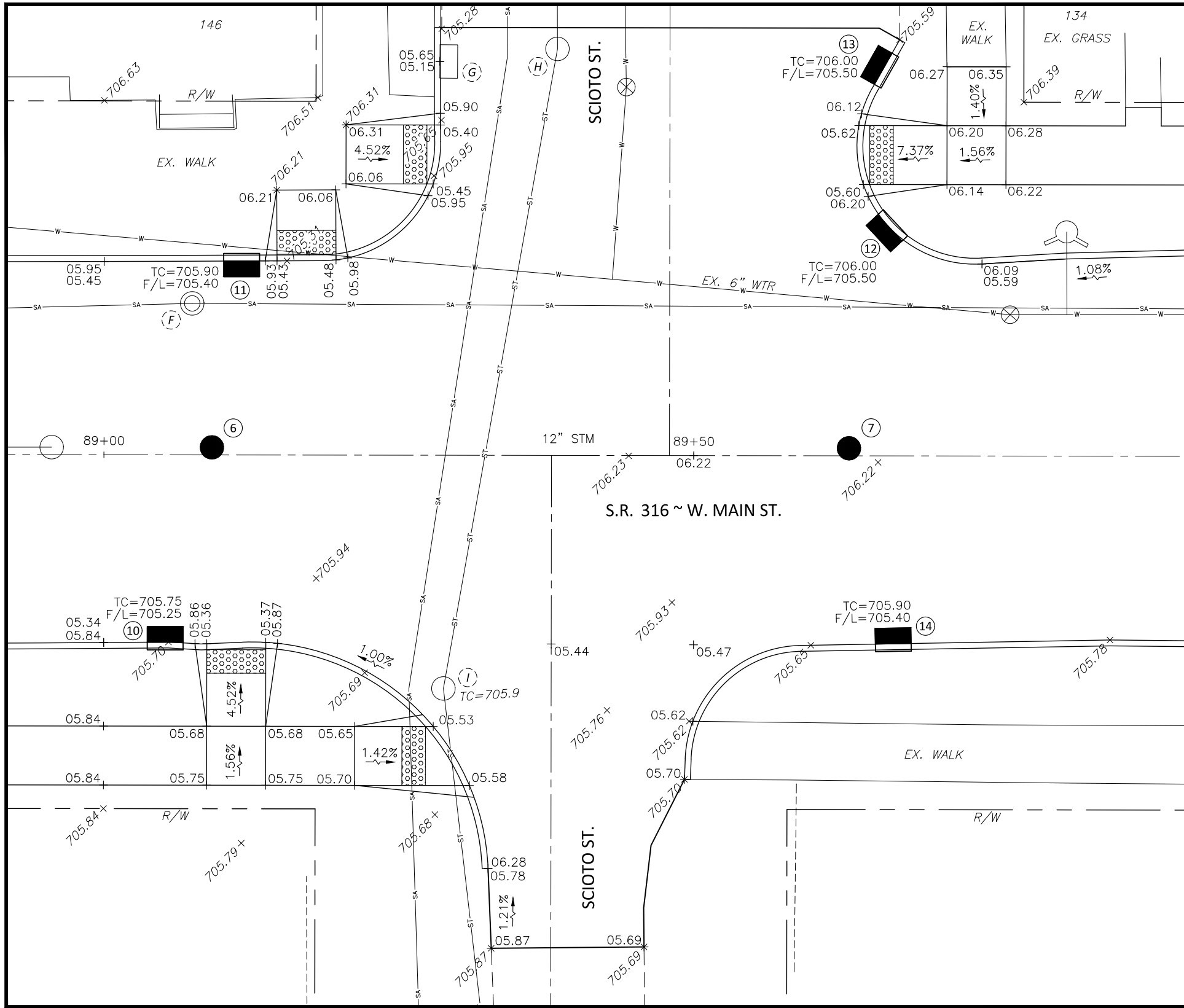
CROMLEY STREET AND S.R. 316 (W. MAIN STREET)



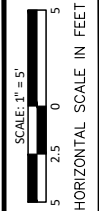
S.R. 316 (W. MAIN STREET AND LONG STREET)



WRIGHT STREET AND S.R. 316 (LONG STREET)



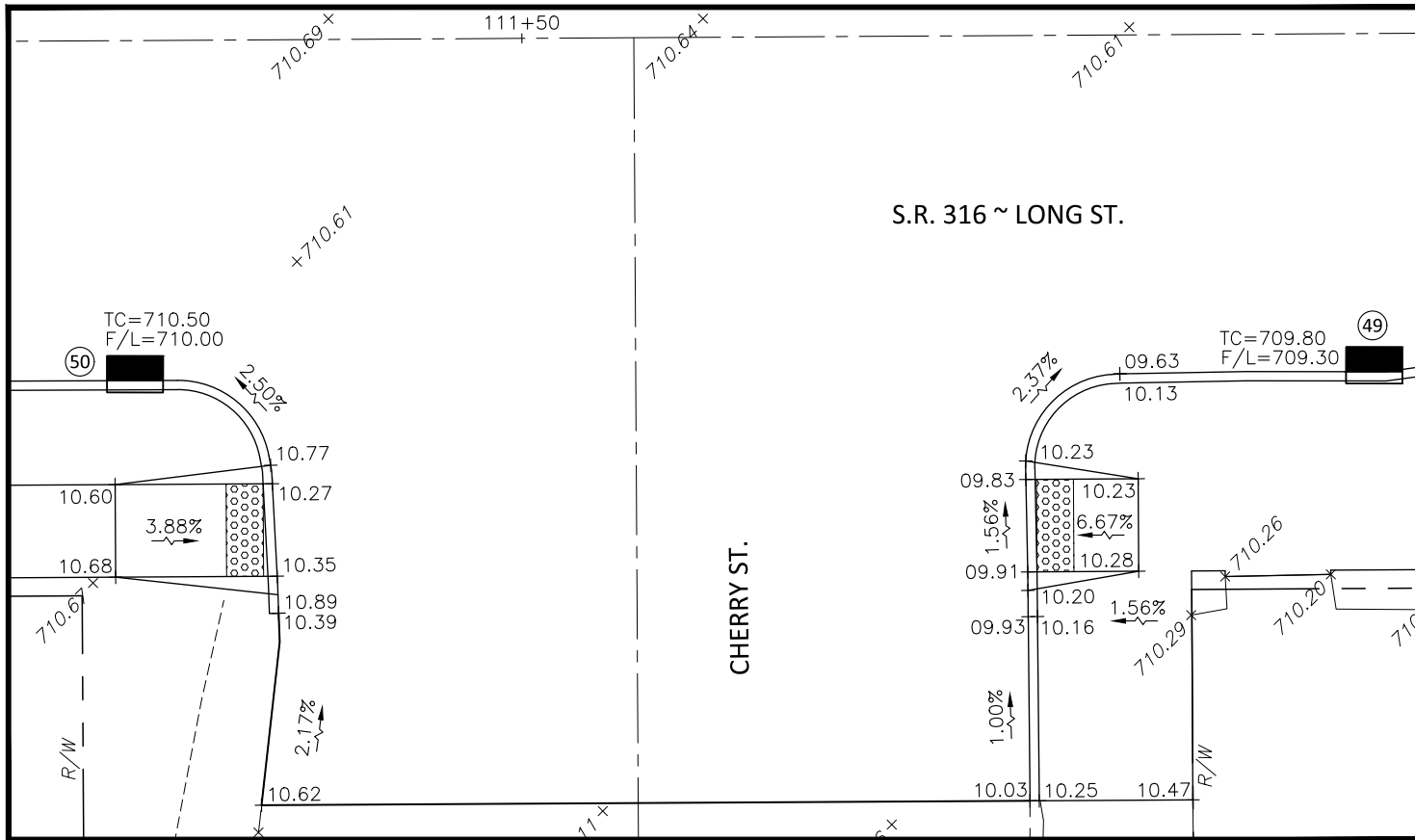
SCIOTO STREET AND S.R. 316 (MAIN STREET)



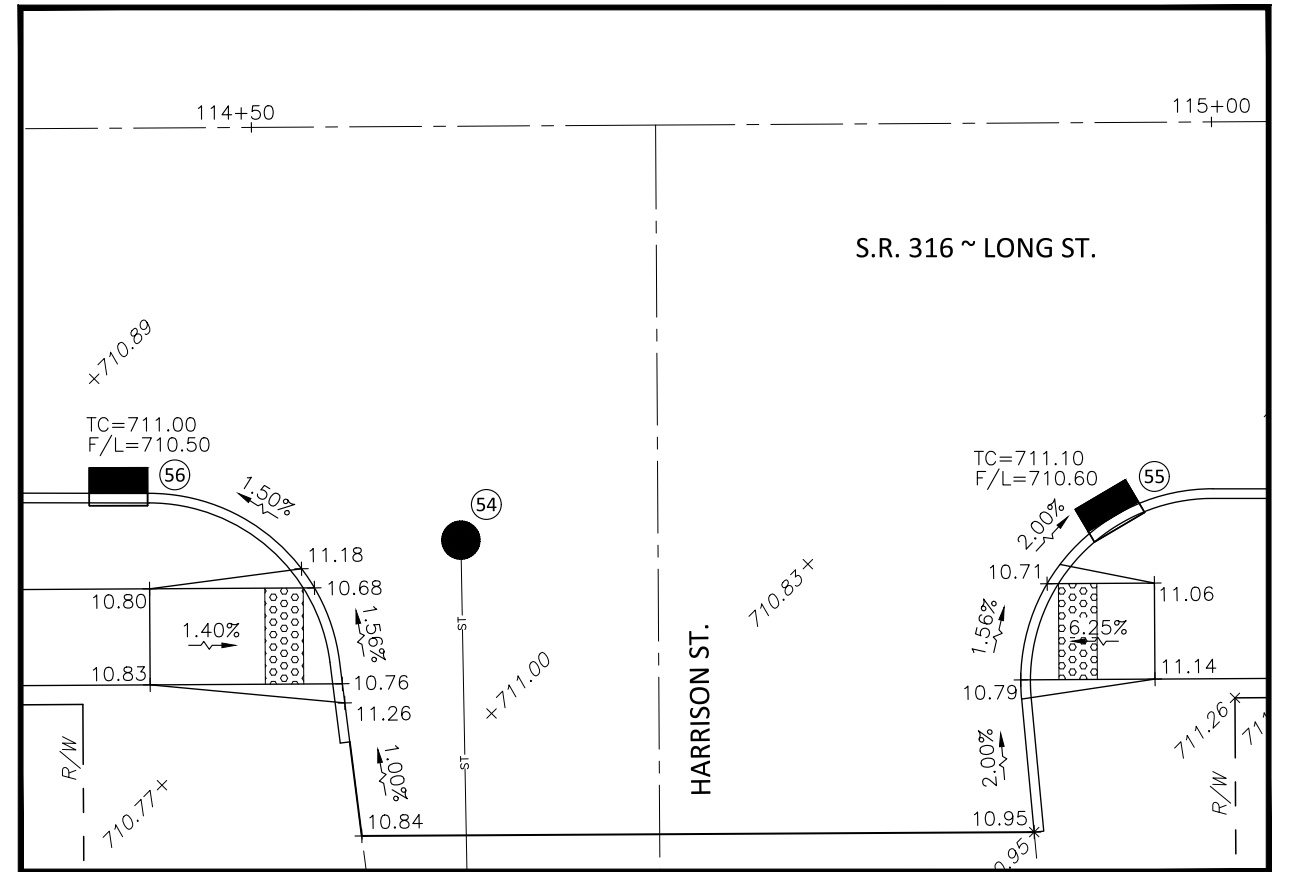
CALCULATED
CHECKED

INTERSECTION DETAILS

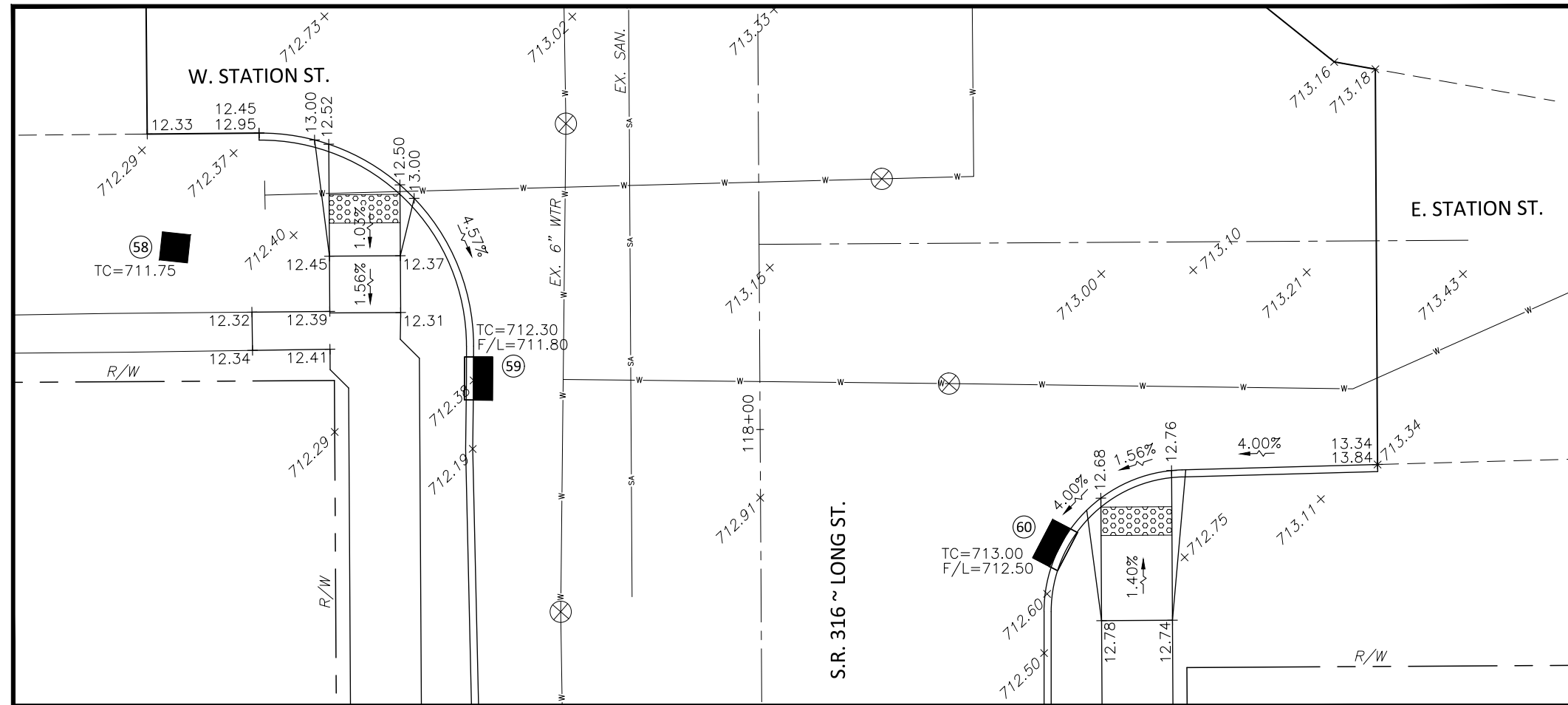
PIC-316 - 13.05-13.68
PART 2



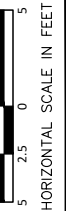
CHERRY STREET AND S.R. 316 (LONG STREET)



HARRISON STREET AND S.R. 316 (LONG STREET)



STATION STREET AND S.R. 316 (LONG STREET)

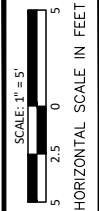


CALCULATED
CHECKED

INTERSECTION DETAILS

**PIC-316 - 13.05-13.68
PART 2**

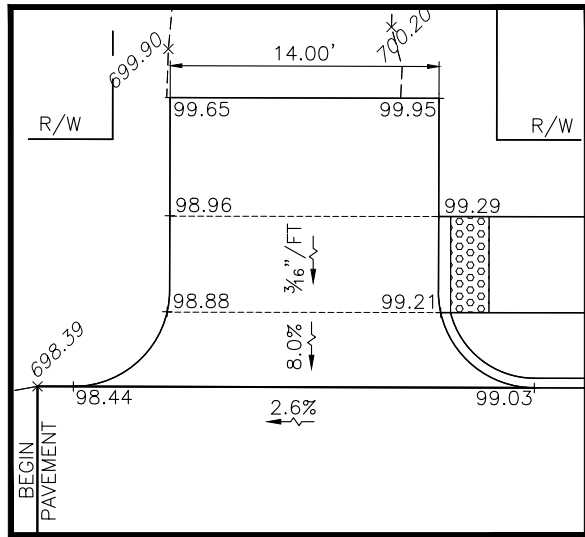
56
66



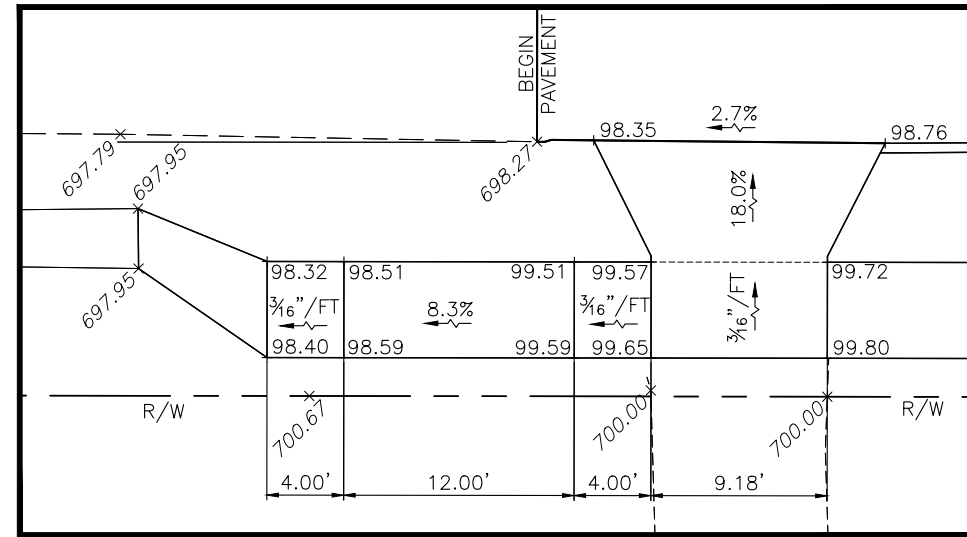
CALCULATED
CHECKED

DRIVE AND ALLEY DETAILS

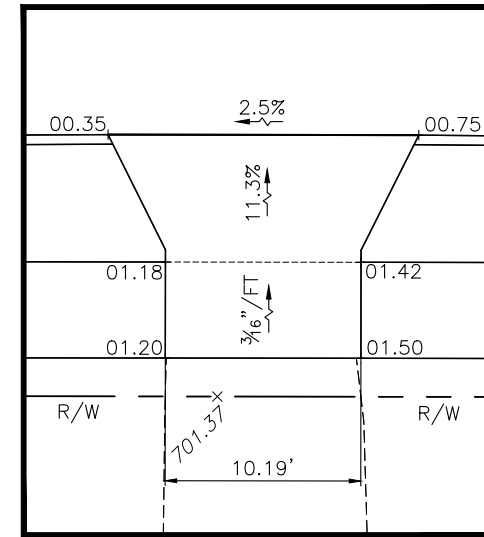
PIC-316 - 13.05-13.68
PART 2



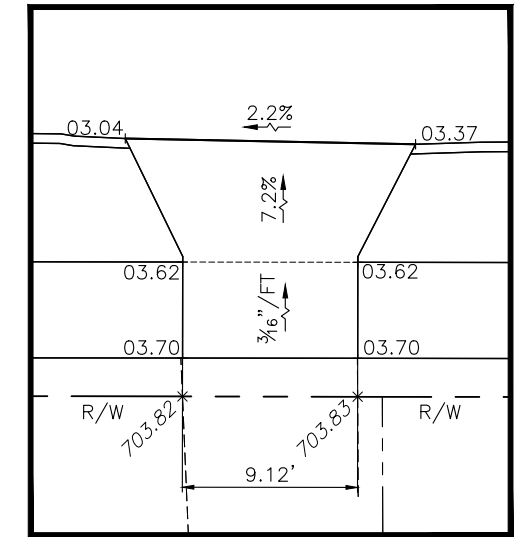
(DR-1) ALLEY
STA. 83+77 LT



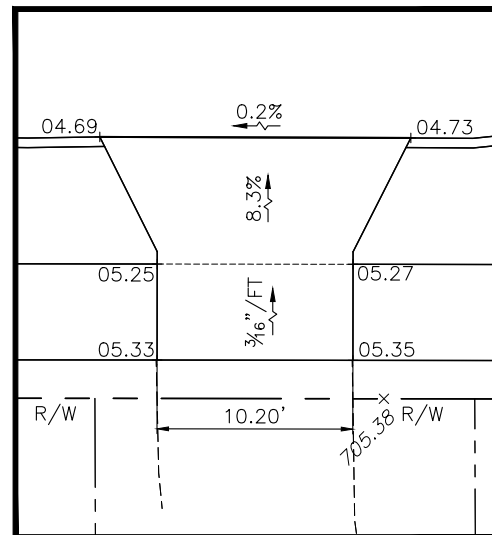
(DR-2) RESIDENTIAL DRIVE
STA. 83+74 RT



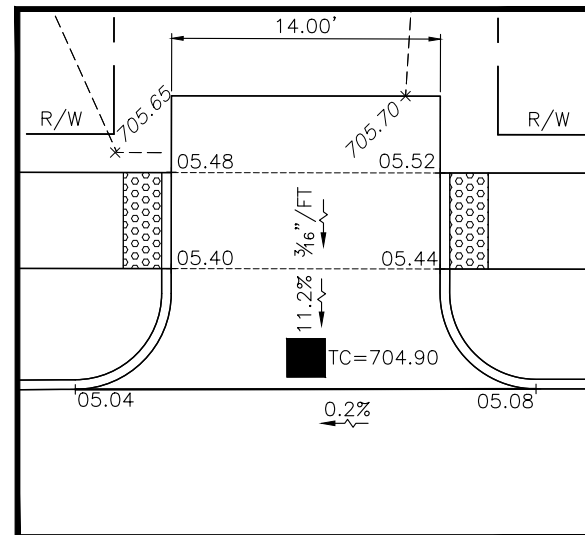
(DR-3) RESIDENTIAL DRIVE
STA. 84+52 RT.



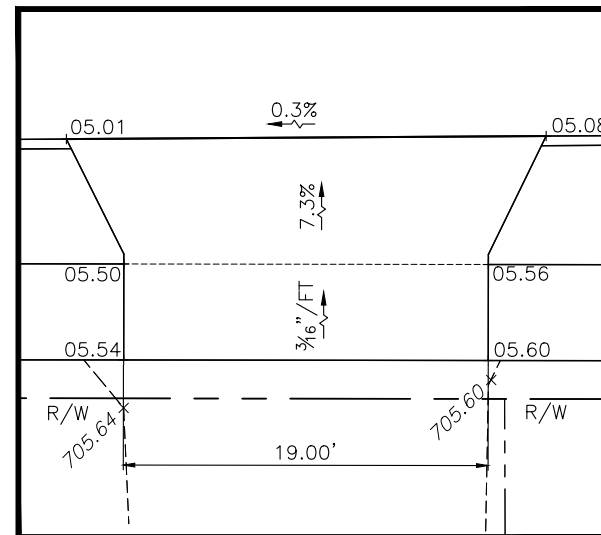
(DR-4) RESIDENTIAL DRIVE
STA. 85+61 RT



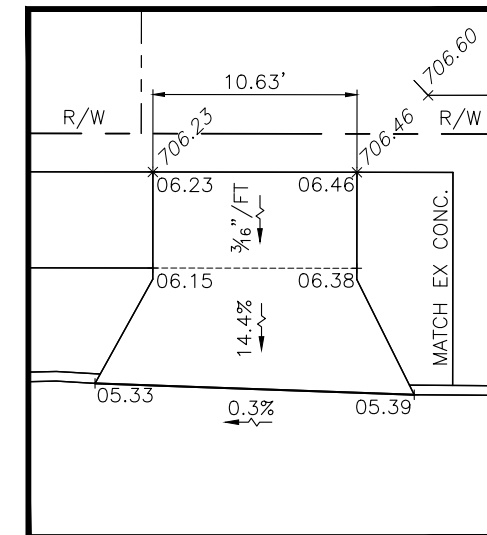
(DR-5) RESIDENTIAL DRIVE
STA. 86+93 RT



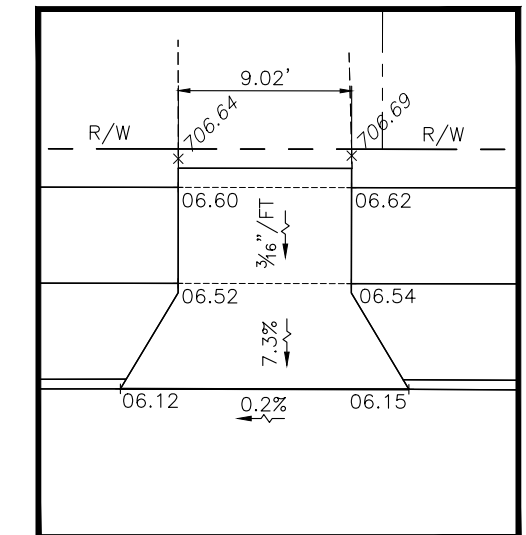
(DR-6) ALLEY
STA. 87+58 LT



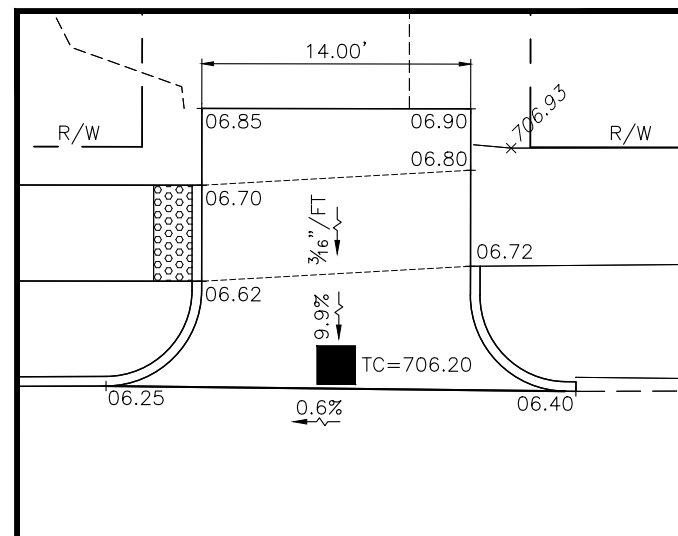
(DR-7) RESIDENTIAL DRIVE
STA. 88+27 RT



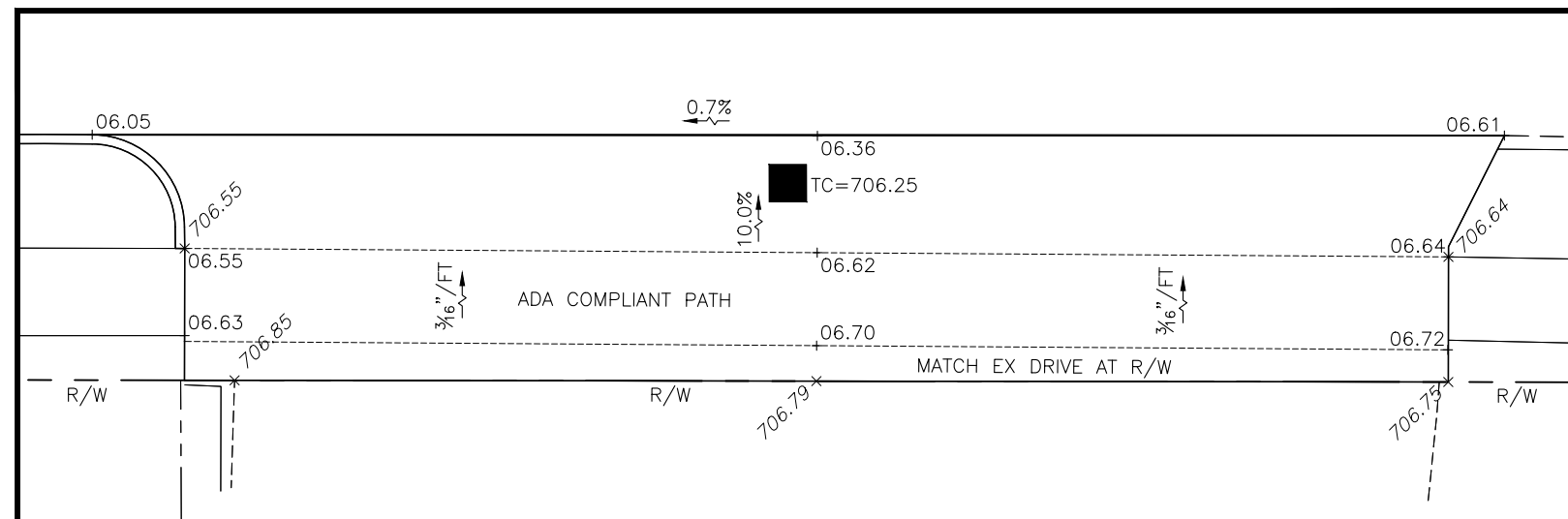
(DR-8) RESIDENTIAL DRIVE
STA. 88+74 LT



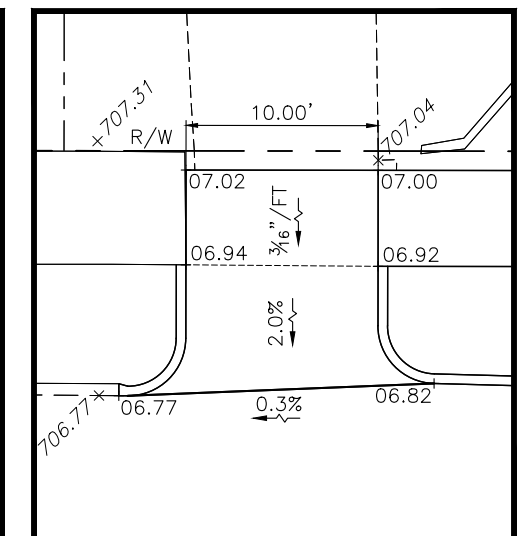
(DR-9) RESIDENTIAL DRIVE
STA. 90+71 RT



(DR-10) ALLEY
STA. 91+38 LT

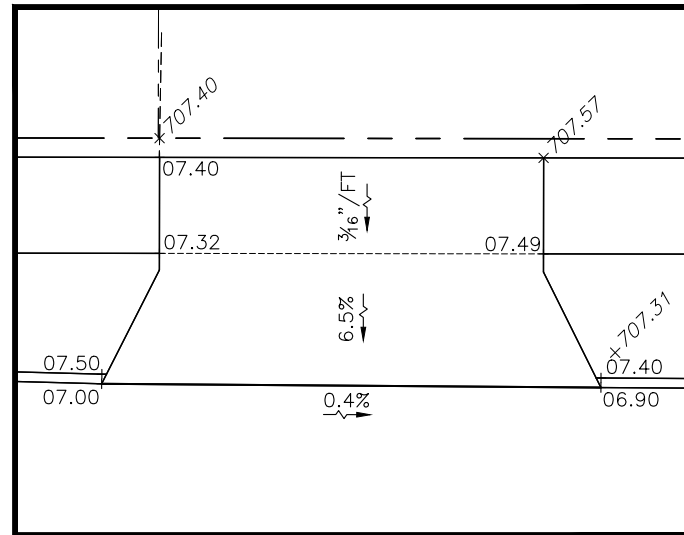


(DR-11) COMMERCIAL DRIVE
STA. 91+46 RT

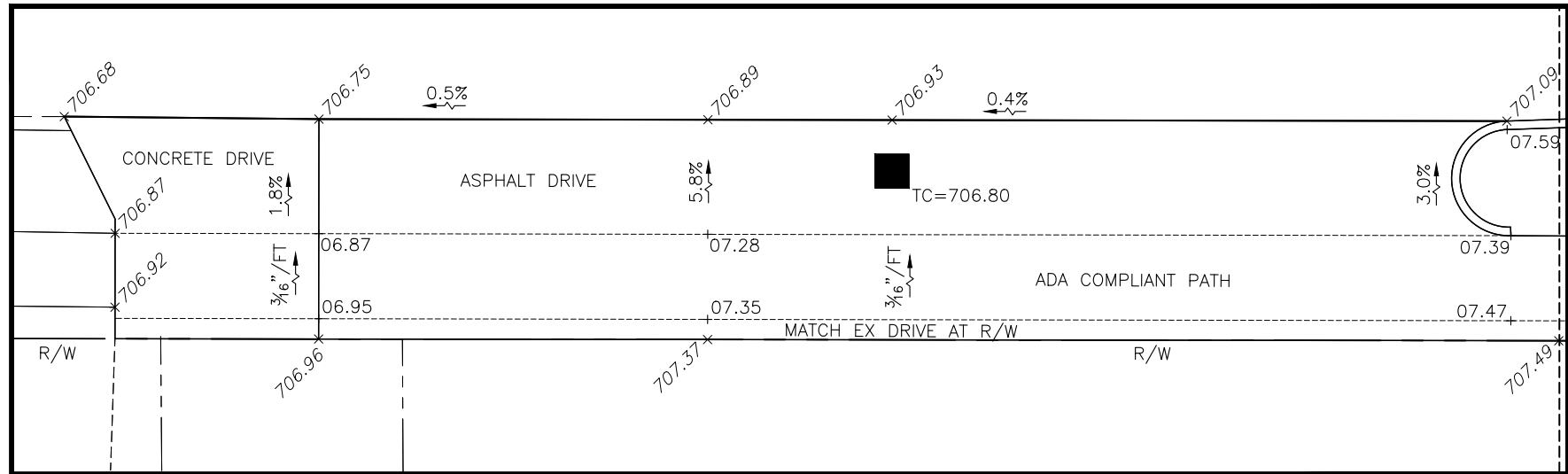


(DR-12) RESIDENTIAL DRIVE
STA. 92+10 LT

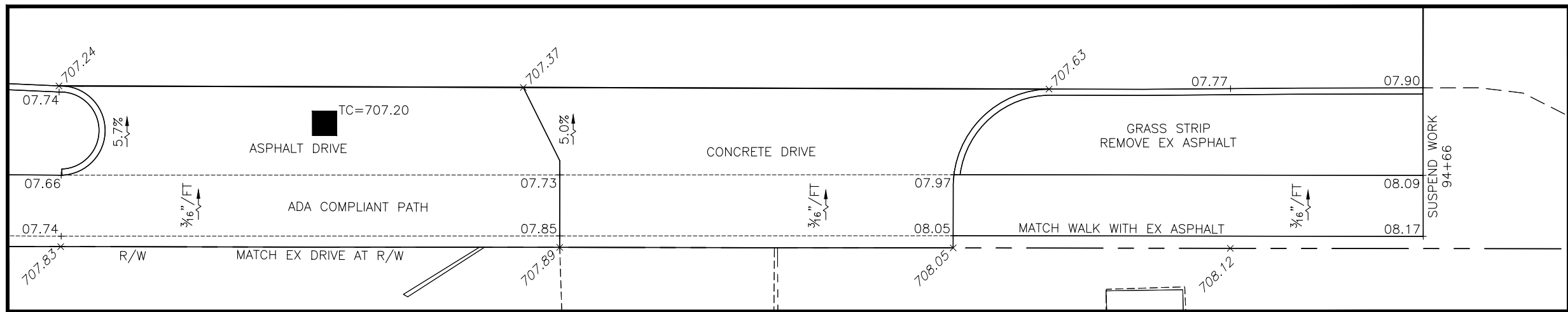
NOTE: ALL ALLEYS SHALL HAVE 4\"/>



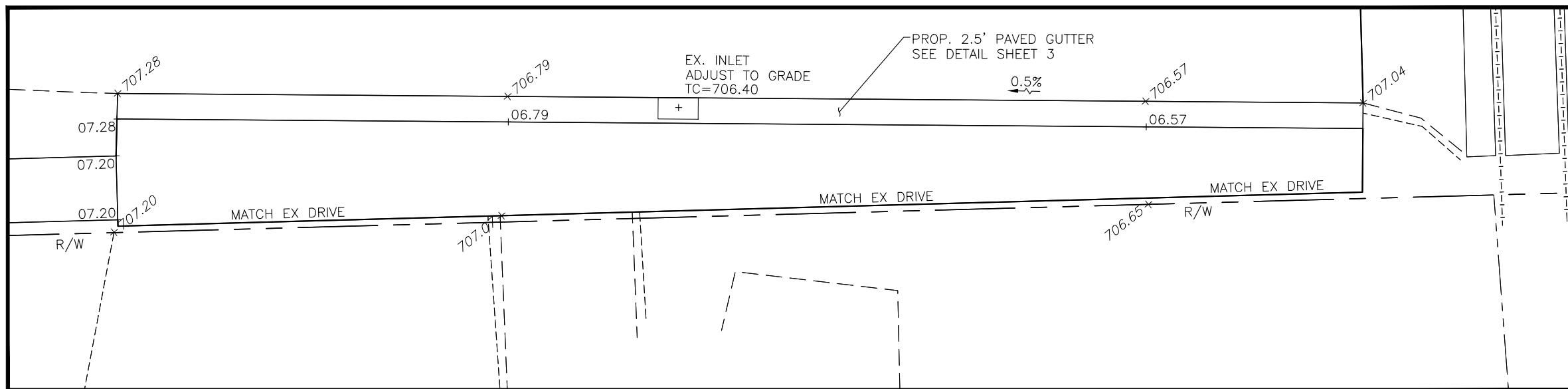
(DR-13) RESIDENTIAL DRIVE
STA. 92+58 LT



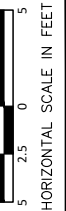
(DR-14) COMMERCIAL DRIVE
STA. 92+62 RT



(DR-15) COMMERCIAL DRIVE
STA. 93+90 RT

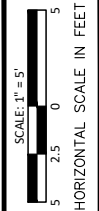


(DR-16) COMMERCIAL DRIVE
STA. 96+18 RT



CALCULATED
CHECKED

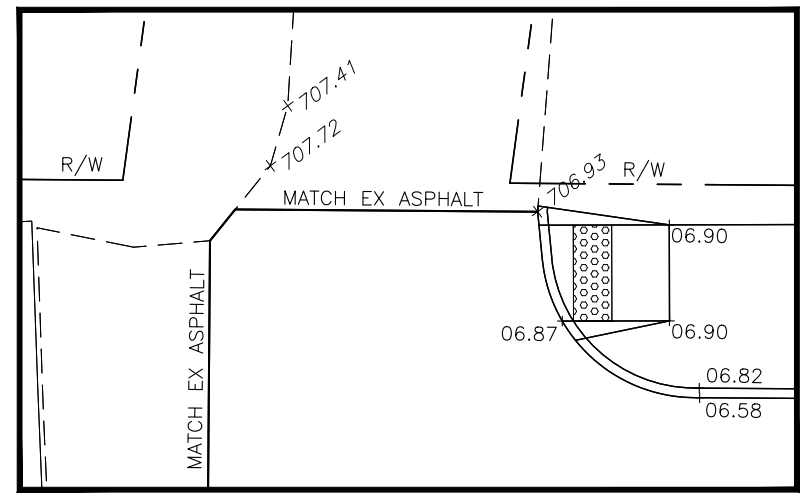
DRIVE AND ALLEY DETAILS



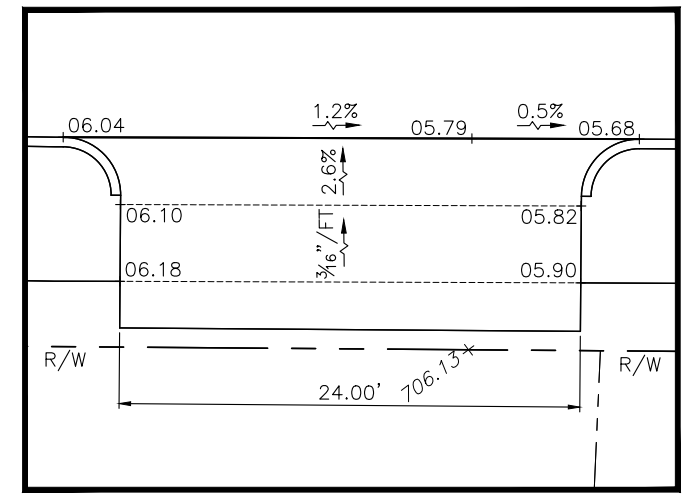
CALCULATED
CHECKED

DRIVE AND ALLEY DETAILS

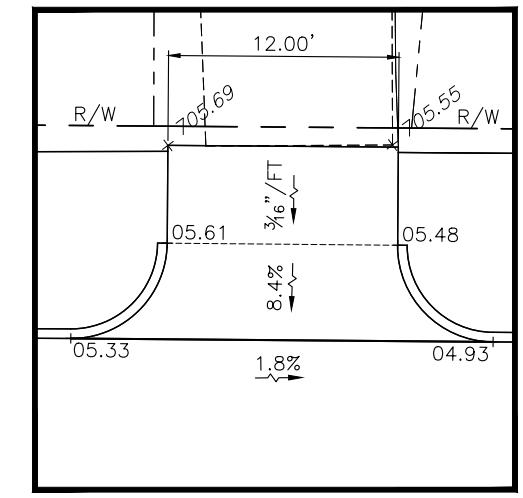
PIC-316 - 13.05-13.68
PART 2



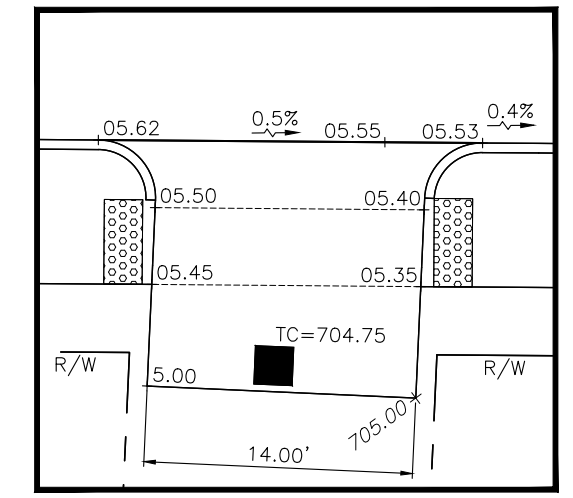
(DR-17) ALLEY
STA. 97+65 RT



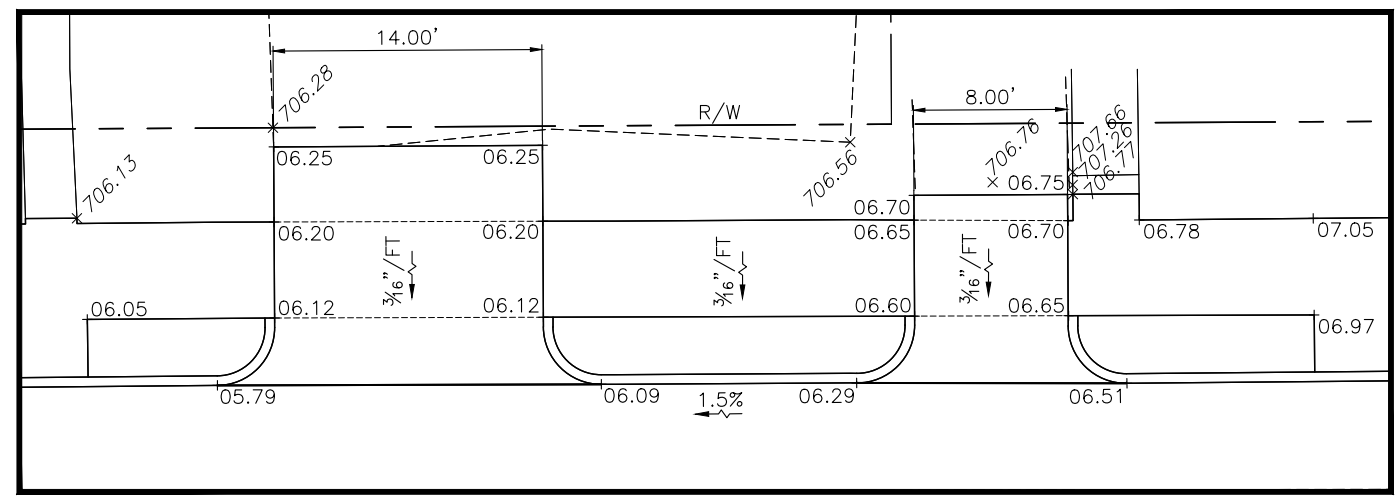
(DR-18) COMMERCIAL DRIVE
STA. 97+94 RT



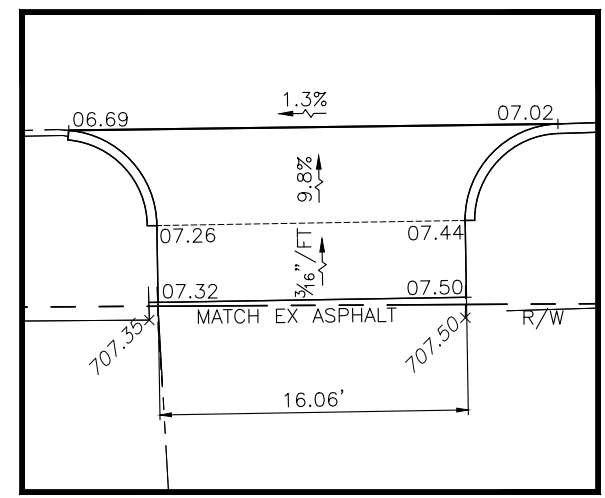
(DR-19) COMMERCIAL DRIVE
STA. 98+66 LT



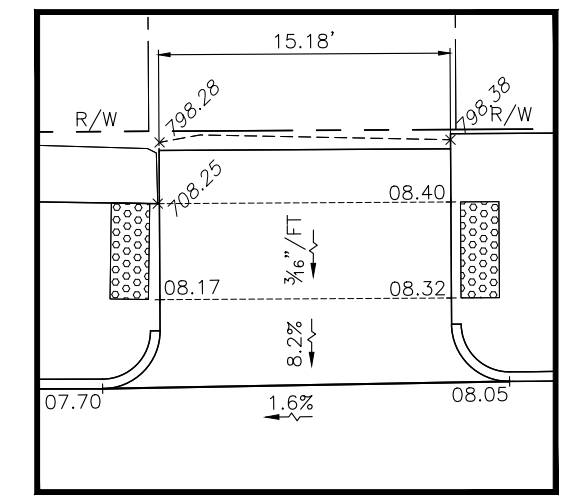
(DR-20) ALLEY
STA. 98+95 RT



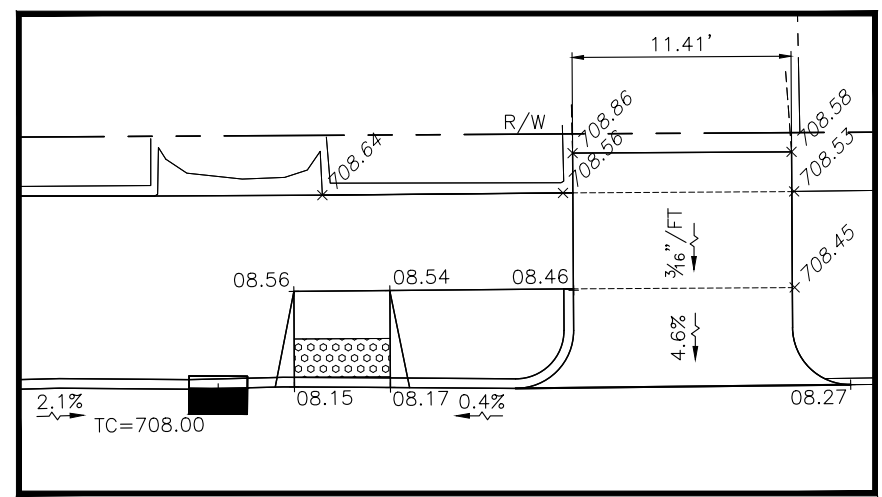
(DR-21) COMMERCIAL DRIVE ~ STA. 101+11 LT
(DR-23) RESIDENTIAL DRIVE ~ STA. 101+42 LT



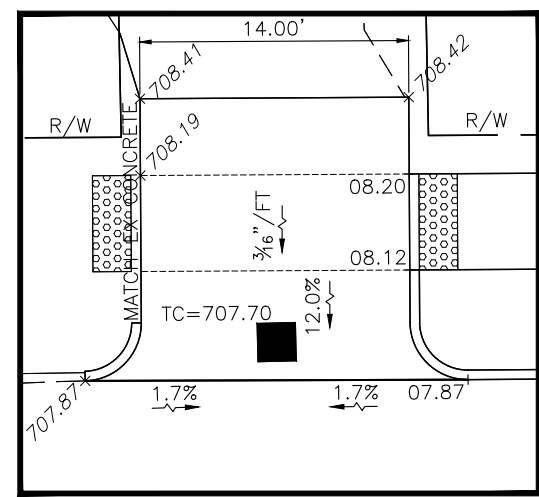
(DR-22) COMMERCIAL DRIVE
STA. 101+27 RT



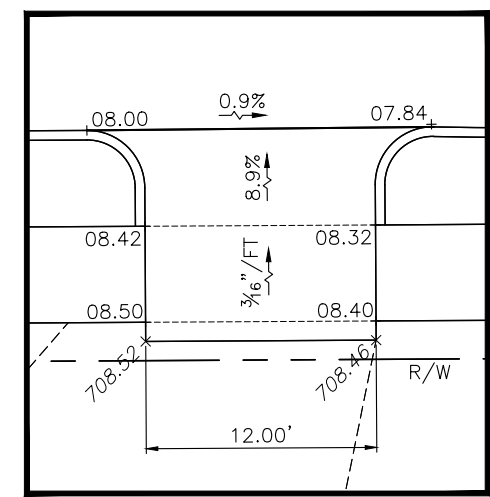
(DR-24) ALLEY
STA. 102+45 LT



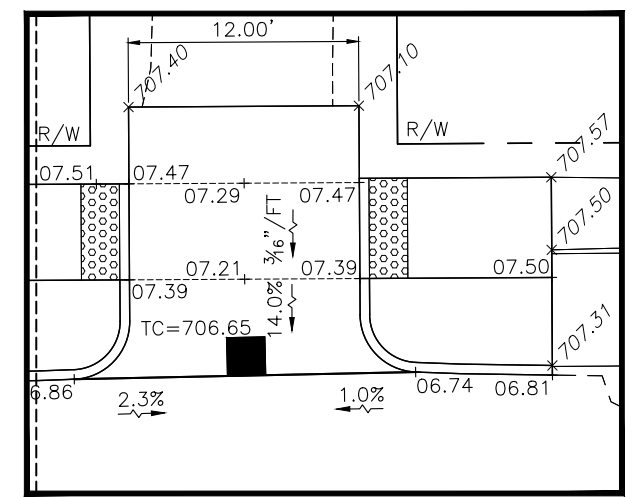
(DR-25) RESIDENTIAL DRIVE
STA. 103+49 LT



(DR-26) ALLEY
STA. 104+63 LT

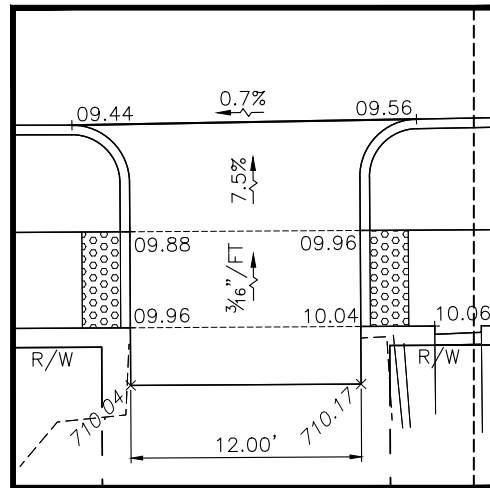


(DR-27) COMMERCIAL DRIVE
STA. 106+09 RT

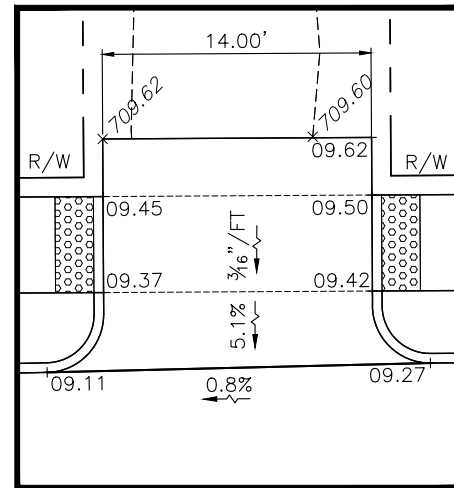


(DR-28) ALLEY
STA. 106+30 LT

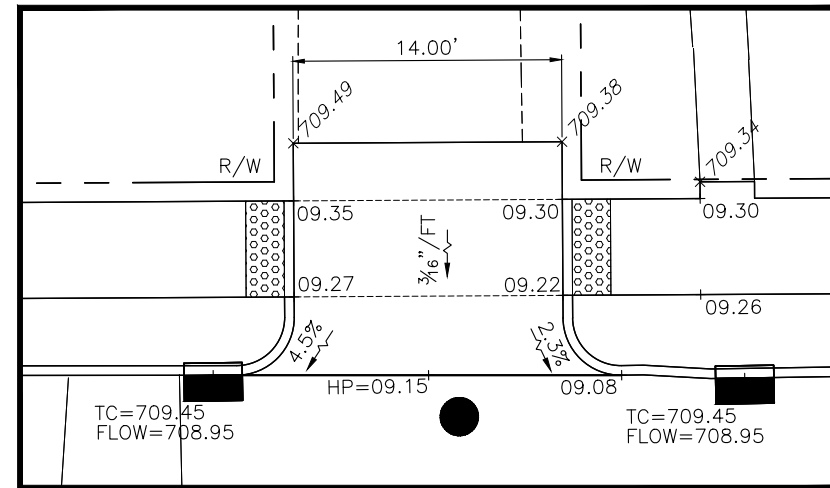
NOTE: ALL ALLEYS SHALL HAVE 4" PIPE UNDERDRAIN ALONG ALLEY CENTERLINE PER CITY OF COLUMBUS STD 2150.



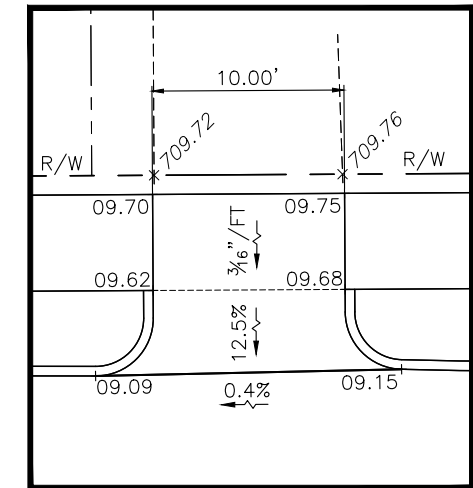
(DR-29) ALLEY
STA. 110+00 RT



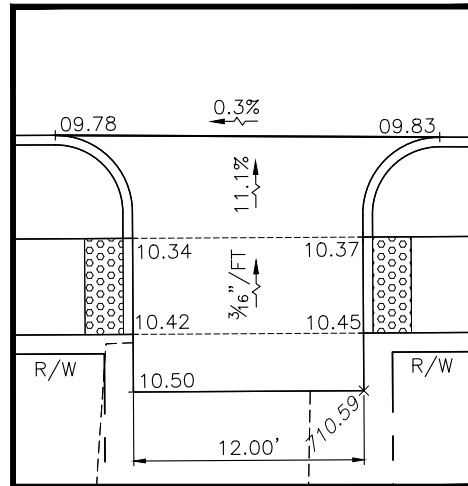
(DR-30) ALLEY
STA. 110+07 LT



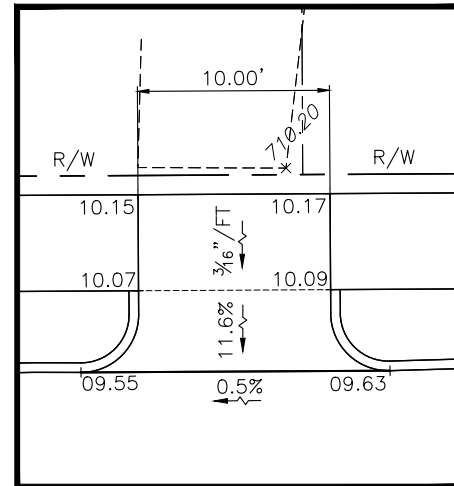
(DR-31) ALLEY
STA. 111+94 LT



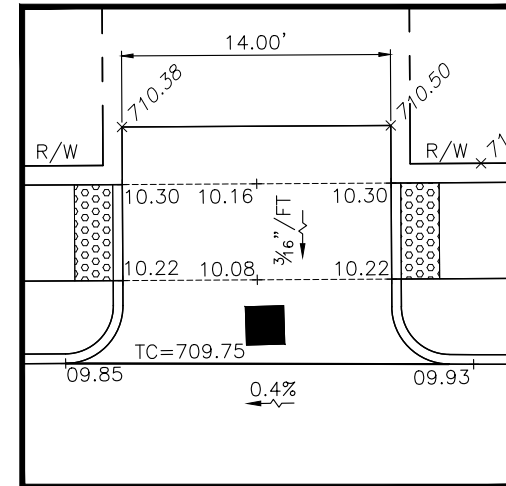
(DR-32) RESIDENTIAL DRIVE
STA. 112+67 LT



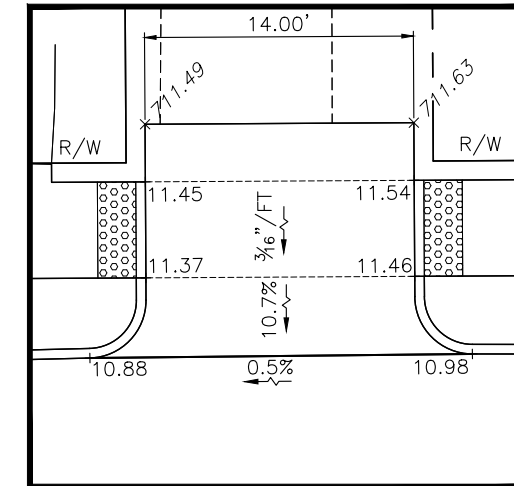
(DR-33) ALLEY
STA. 113+14 RT



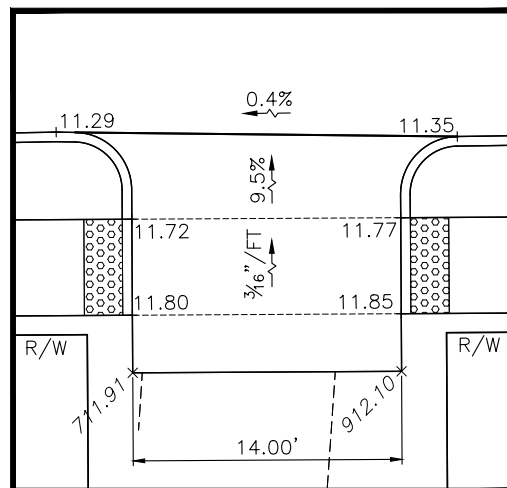
(DR-34) RESIDENTIAL DRIVE
STA. 113+70 LT



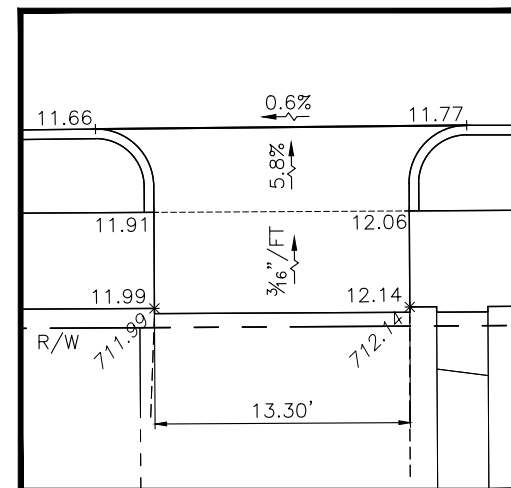
(DR-35) ALLEY
STA. 114+39 LT



(DR-36) ALLEY
STA. 116+25 LT



(DR-37) ALLEY
STA. 116+26 RT



(DR-38) RESIDENTIAL DRIVE
STA. 117+00 RT

NOTE: ALL ALLEYS SHALL HAVE 4" PIPE UNDERDRAIN ALONG ALLEY CENTERLINE PER CITY OF COLUMBUS STD 2150.



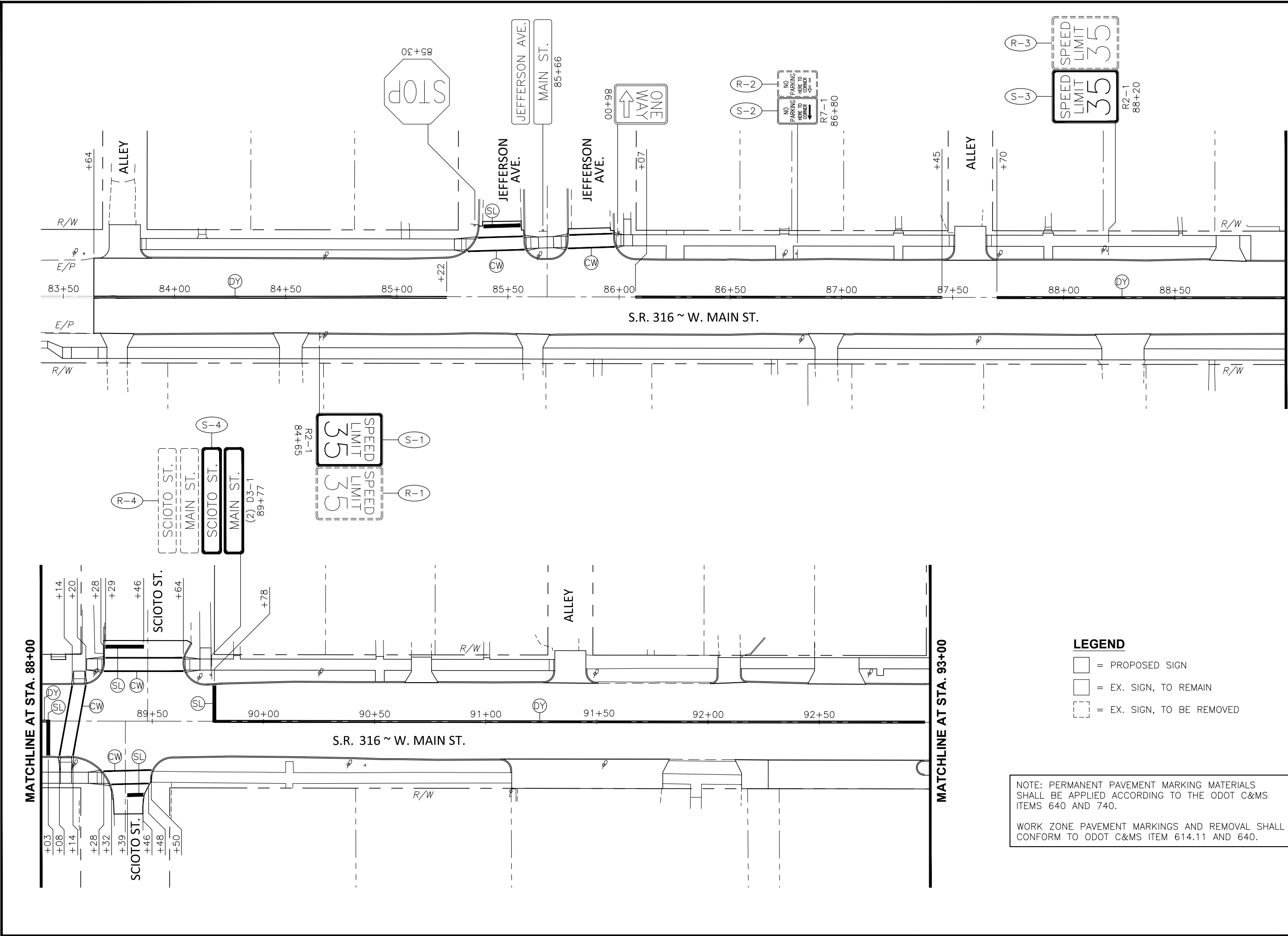
CALCULATED
CHECKED

DRIVE AND ALLEY DETAILS

SIGNING SUB-SUMMARY											
SHEET NO.	LOCATION	REF. NO.	STATION	SIDE	CODE	SIZE (INCHES)	630				
							GROUND MOUNTED SUPPORT, NO. 3 POST	SIGN, FLAT SHEET	REMOVAL OF GROUND MOUNTED SIGN AND DISPOSAL		
											FT
63	S.R. 316 (MAIN STREET)	S-1	85+30	LT.	R1-1	30X30	12.5	6.25			
63		S-2	86+80	LT.	R7	12X18	11.5	1.5			
63		S-3	88+20	LT.	R2-1	24X30	12.5	5			
63		S-4	89+77	LT.	D3-1(2)	24X8	12	2.67			
64		S-5	93+32	RT.	W10-1	24 DIA.	11.5	3.14			
64		S-6	93+53	LT.	D3-1(2)	24X8	12	2.67			
64		S-7	98+02	RT.	M1-5	30X24	12	5			
						M5-1	21X15	11.5	2.19		
65		S.R. 316 (LONG STREET)	S-8	101+73	LT.	M1-5	30X24	12	5		
							M5-1	21X15	11.5	2.19	
65	S-9		103+83	RT.	D3-1(2)	24X8	12	2.67			
						R1-1	30X30	12.5	6.25		
65	S-10		105+55	RT.	D3-1(2)	24X8	12	2.67			
						R1-1	30X30	12.5	6.25		
65	S-11		105+83	RT.	R2-1	24X30	12.5	5			
65	S-12		106+44	LT.	R2-1	24X30	12.5	5			
65	S-13		106+67	RT.	W11-2	30X30	12.5	6.25			
65	S-14		108+99	LT.	W11-2	30X30	12.5	6.25			
66	S-15		111+80	RT.	D3-1(2)	24X8	12	2.67			
						R1-1	30X30	12.5	6.25		
66	S-16		112+19	RT.	R2-1	24X30	12.5	5			
66	S-17		116+15	LT.	R5-1	30X30	12.5	6.25			
66	S-18	116+35	LT.	CUSTOM	18X24	12	3				
66	S-19	117+69	LT.	R2-1	24X30	12.5	5				
66	S-20	118+09	LT.	D3-1(2)	24X8	12	2.67				
63	S.R. 316 (MAIN STREET)	R-1	85+30	LT.	R1-1	30X30			1		
63		R-2	86+80	LT.	R7	12X18			1		
63		R-3	88+20	LT.	R2-1	24X30			1		
63		R-4	89+77	LT.	D3-1(2)	24X8			1		
64		R-5	93+32	RT.	W10-1	24 DIA.			1		
64		R-6	93+53	LT.	D3-1(2)	24X8			1		
64		R-7	98+02	RT.	M1-5	30X24			2		
						M5-1	21X15			2	
65		R-8	101+73	LT.	M1-5	30X24			2		
						M5-1	21X15			2	
65		R-9	103+83	RT.	D3-1(2)	24X8			2		
						R1-1	30X30			2	
65		R-10	105+55	RT.	D3-1(2)	24X8			2		
						R1-1	30X30			2	
65	R-11	105+83	RT.	R2-1	24X30			1			
65	R-12	106+44	LT.	R2-1	24X30			1			
65	R-13	106+67	RT.	W11-2	30X30			1			
65	R-14	108+99	LT.	W11-2	30X30			1			

SIGNING SUB-SUMMARY (CONTINUED)											
SHEET NO.	LOCATION	REF. NO.	STATION	SIDE	CODE	SIZE (INCHES)	630				
							GROUND MOUNTED SUPPORT, NO. 3 POST	SIGN, FLAT SHEET	REMOVAL OF GROUND MOUNTED SIGN AND DISPOSAL		
											FT
66	S.R. 316 (LONG STREET)	R-15	111+80	RT.	D3-1(2)	24X8					
						R1-1	30X30			2	
66		R-16	112+19	RT.	R2-1	24X30				1	
66		R-17	116+15	LT.	R5-1	30X30				1	
66		R-18	116+35	LT.	CUSTOM	18X24				1	
66		R-19	117+69	LT.	R2-1	24X30				1	
66		R-20	118+09	LT.	D3-1(2)	24X8				1	
TOTALS CARRIED TO GENERAL SUMMARY							304	107	25		

TRAFFIC CONTROL ITEMS SUB-SUMMARY										
SHEET NO.	LOCATION	LINE ID	SIDE	644						
				CENTER LINE, DOUBLE SOLID	STOP LINE, 24"	CROSSWALK LINE, 12"	RAILROAD SYMBOL MARKING			
63	S.R. 316 (MAIN STREET)	DY	BOTH	0.14						
63		SL	BOTH		74					
63		CW	BOTH			259				
64	S.R. 316 (MAIN STREET & LONG STREET)	DY	BOTH	0.12						
64		SL	BOTH		104					
64		CW	BOTH			208				
64		RR	BOTH				2			
65	S.R. 316 (LONG STREET)	DY	BOTH	0.14						
65		SL	BOTH		70					
65		CW	BOTH			432				
66	S.R. 316 (LONG STREET)	DY	BOTH	0.12						
66		SL	BOTH		102					
66		CW	BOTH			283				
TOTALS CARRIED TO GENERAL SUMMARY				0.52	350	1182	2			



MATCHLINE AT STA. 88+00

MATCHLINE AT STA. 93+00

MATCHLINE AT STA. 88+00

LEGEND

- = PROPOSED SIGN
- = EX. SIGN, TO REMAIN
- = EX. SIGN, TO BE REMOVED

NOTE: PERMANENT PAVEMENT MARKING MATERIALS SHALL BE APPLIED ACCORDING TO THE ODOT C&MS ITEMS 640 AND 740.

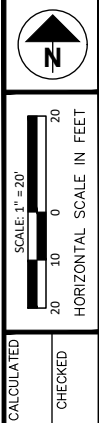
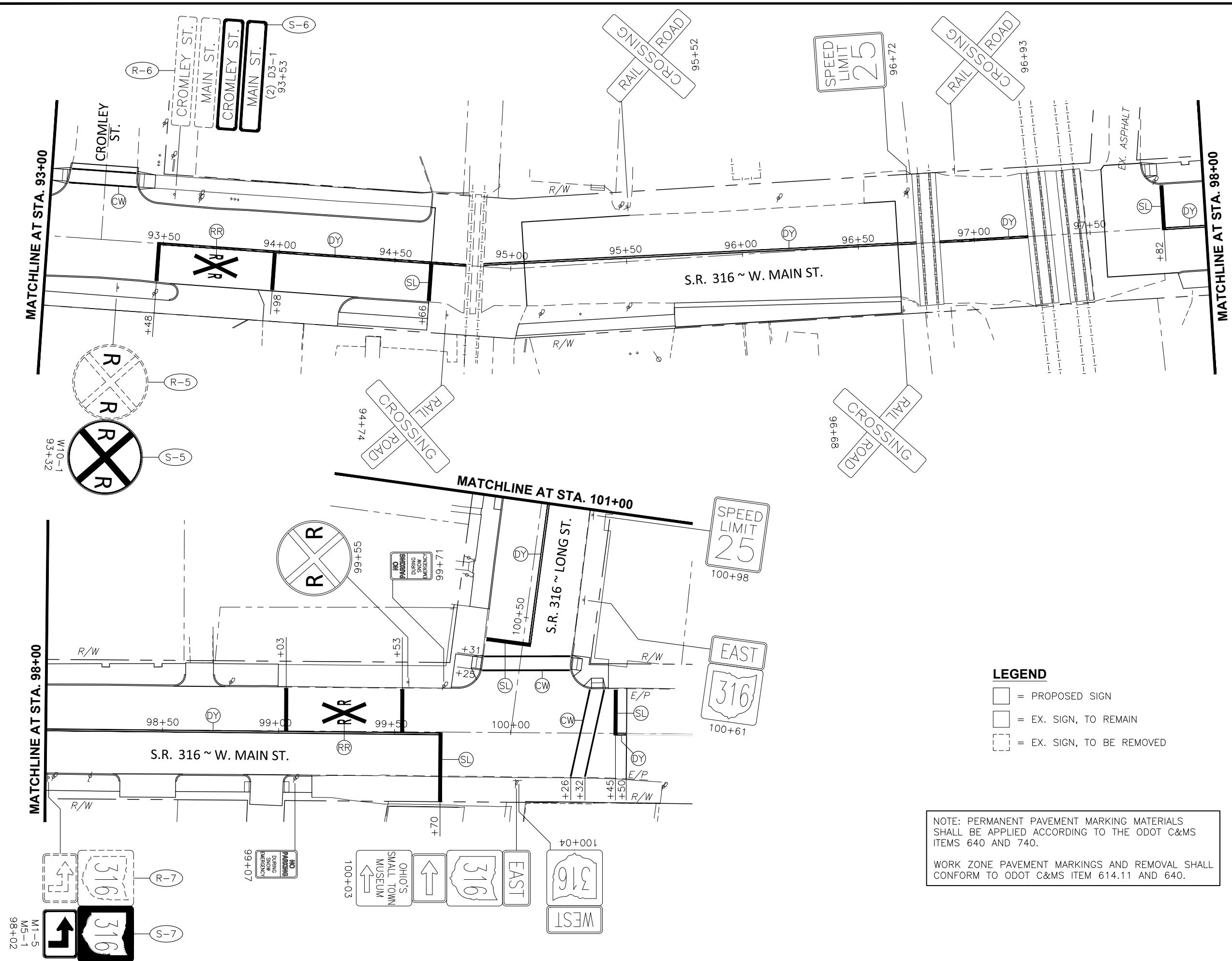
WORK ZONE PAVEMENT MARKINGS AND REMOVAL SHALL CONFORM TO ODOT C&MS ITEM 614.11 AND 640.

SCALE: 1" = 20'
 HORIZONTAL SCALE IN FEET

CALCULATED
 CHECKED

TRAFFIC CONTROL PLAN
STA. 83+64 TO STA. 93+00

PIC-316 - 13.05-13.68
PART 2



CALCULATED
CHECKED

TRAFFIC CONTROL PLAN
STA. 93+00 TO STA. 101+00

PIC-316 - 13.05-13.68
PART 2

LEGEND
 [Solid Line] = PROPOSED SIGN
 [Dashed Line] = EX. SIGN, TO REMAIN
 [Dotted Line] = EX. SIGN, TO BE REMOVED

NOTE: PERMANENT PAVEMENT MARKING MATERIALS SHALL BE APPLIED ACCORDING TO THE ODOT C&M ITEMS 640 AND 740.
 WORK ZONE PAVEMENT MARKINGS AND REMOVAL SHALL CONFORM TO ODOT C&M ITEM 614.11 AND 640.

M1-5
M5-1
98+02

R-7
S-7

99+07
NO PARKING
BUSING
SNOW
EMERGENCY

100+03
OHIO'S
SMALL TOWN
MUSEUM
↑
316
EAST
WEST
316

100+61
EAST
316

100+98
SPEED
LIMIT
25

MATCHLINE AT STA. 101+00

S.R. 316 ~ LONG ST.

94+74
RAIL
CROSSING
ROAD

89+96
RAIL
CROSSING
ROAD

96+93
RAIL
CROSSING
ROAD

95+52
RAIL
CROSSING
ROAD

MATCHLINE AT STA. 93+00

MATCHLINE AT STA. 98+00

S.R. 316 ~ W. MAIN ST.

R-6
S-6
CROMLEY ST.
MAIN ST.
CROMLEY ST.
MAIN ST.
(2) D3-1
93+53

93+32
W10-1
R-5
S-5

S.R. 316 ~ W. MAIN ST.

MATCHLINE AT STA. 98+00

93+50

94+00

94+50

95+00

95+50

96+00

96+50

97+00

97+50

+82

+48

+98

+66

R
R
R
R

R
R

R
R

NO PARKING
BUSING
SNOW
EMERGENCY

100+50

S.R. 316 ~ LONG ST.

100+61
EAST
316

100+98
SPEED
LIMIT
25

94+74
RAIL
CROSSING
ROAD

89+96
RAIL
CROSSING
ROAD

96+93
RAIL
CROSSING
ROAD

95+52
RAIL
CROSSING
ROAD

MATCHLINE AT STA. 93+00

MATCHLINE AT STA. 98+00

S.R. 316 ~ W. MAIN ST.

R-6
S-6
CROMLEY ST.
MAIN ST.
CROMLEY ST.
MAIN ST.
(2) D3-1
93+53

93+32
W10-1
R-5
S-5

S.R. 316 ~ W. MAIN ST.

MATCHLINE AT STA. 98+00

93+50

94+00

94+50

95+00

95+50

96+00

96+50

97+00

97+50

+82

+48

+98

+66

R
R
R
R

R
R

R
R

NO PARKING
BUSING
SNOW
EMERGENCY

100+50

S.R. 316 ~ LONG ST.

100+61
EAST
316

100+98
SPEED
LIMIT
25

94+74
RAIL
CROSSING
ROAD

89+96
RAIL
CROSSING
ROAD

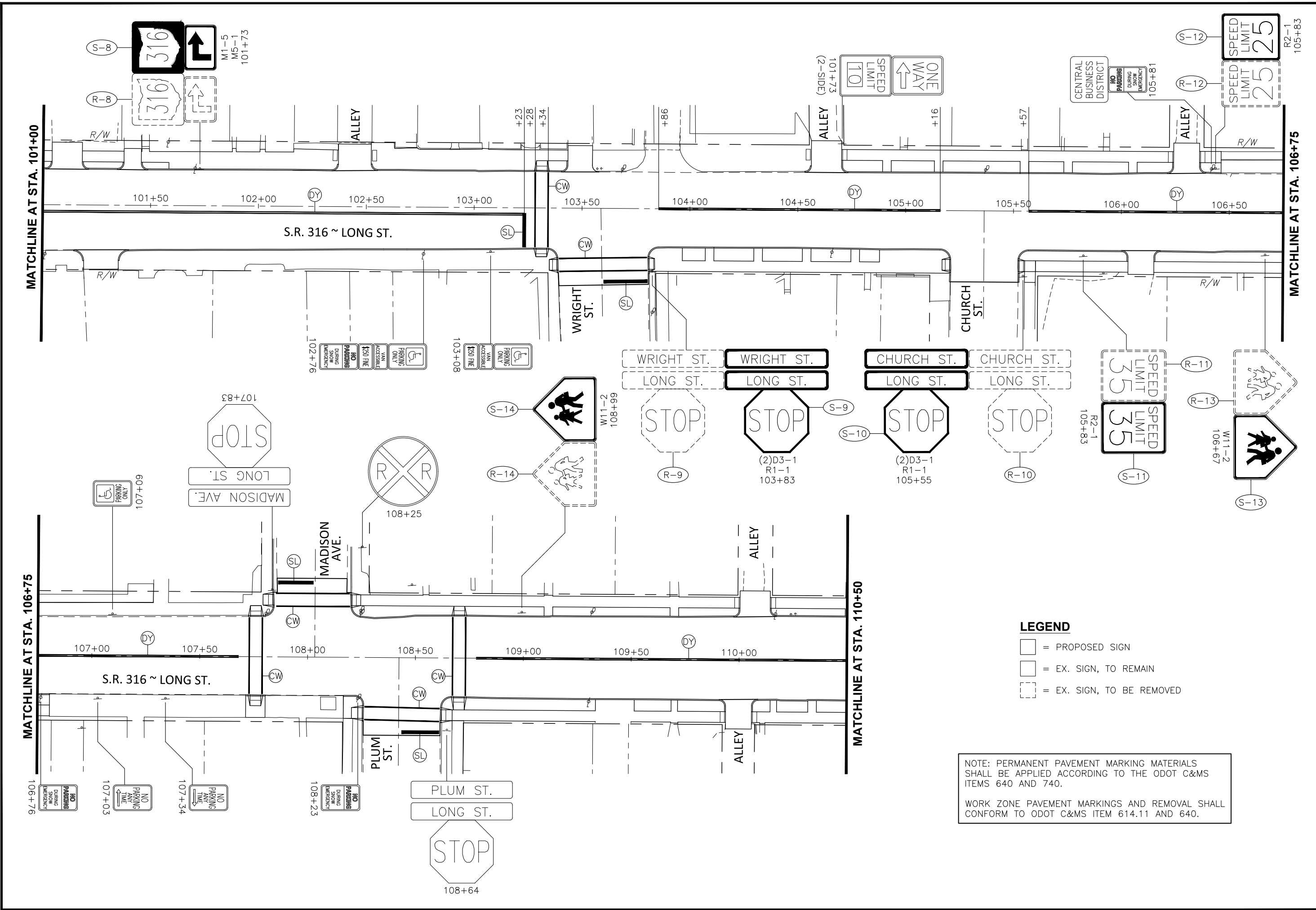
96+93
RAIL
CROSSING
ROAD

95+52
RAIL
CROSSING
ROAD

MATCHLINE AT STA. 93+00

MATCHLINE AT STA. 98+00

S.R. 316 ~ W. MAIN ST.

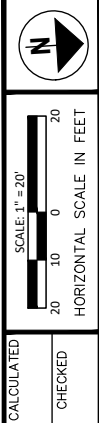


LEGEND

- = PROPOSED SIGN
- = EX. SIGN, TO REMAIN
- = EX. SIGN, TO BE REMOVED

NOTE: PERMANENT PAVEMENT MARKING MATERIALS SHALL BE APPLIED ACCORDING TO THE ODOT C&MS ITEMS 640 AND 740.

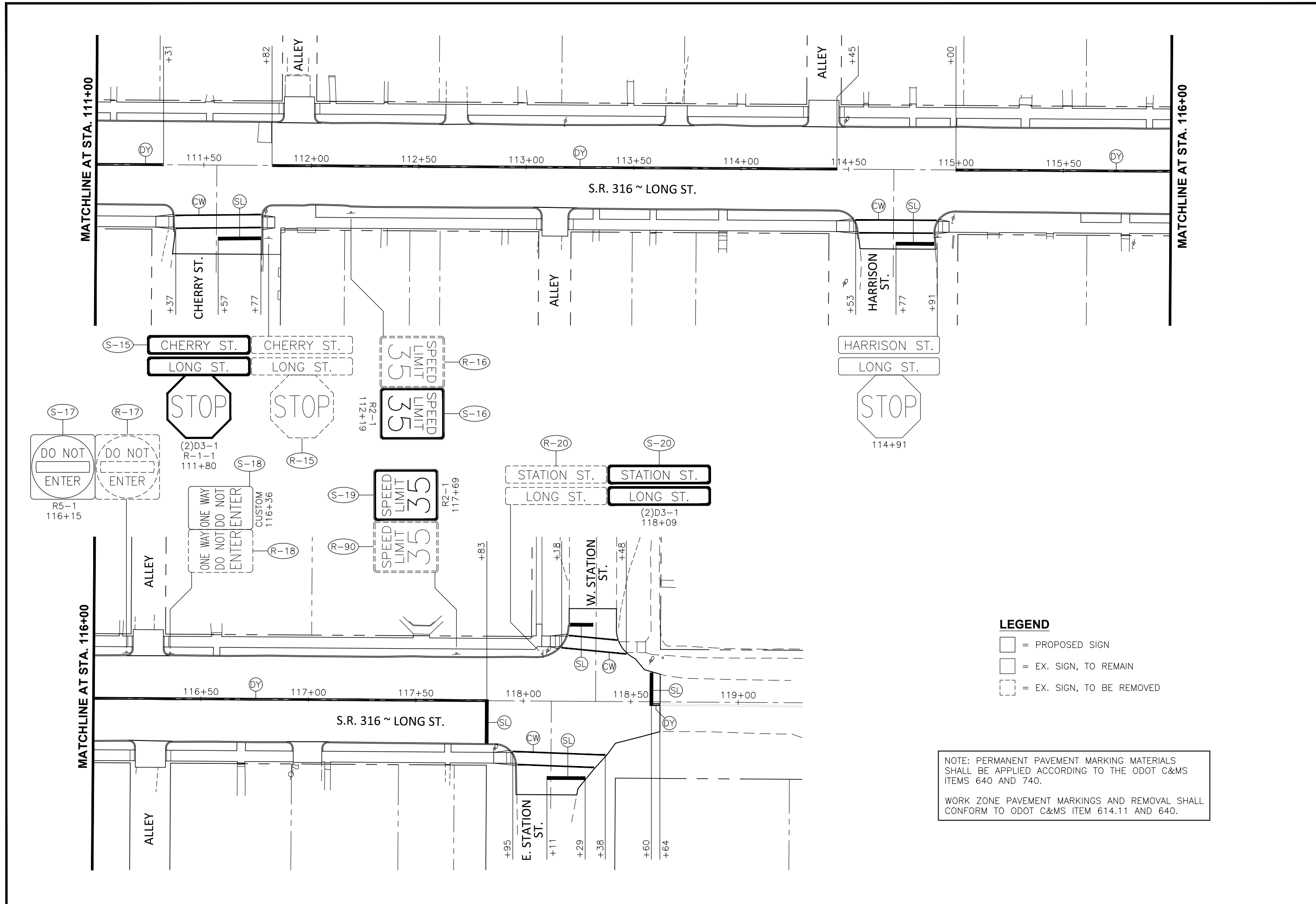
WORK ZONE PAVEMENT MARKINGS AND REMOVAL SHALL CONFORM TO ODOT C&MS ITEM 614.11 AND 640.



CALCULATED
CHECKED

TRAFFIC CONTROL PLAN
STA. 101+00 TO STA. 111+00

PIC-316 - 13.05-13.68
PART 2

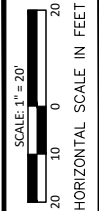


LEGEND

- = PROPOSED SIGN
- = EX. SIGN, TO REMAIN
- = EX. SIGN, TO BE REMOVED

NOTE: PERMANENT PAVEMENT MARKING MATERIALS SHALL BE APPLIED ACCORDING TO THE ODOT C&MS ITEMS 640 AND 740.

WORK ZONE PAVEMENT MARKINGS AND REMOVAL SHALL CONFORM TO ODOT C&MS ITEM 614.11 AND 640.



CALCULATED
CHECKED

TRAFFIC CONTROL PLAN
STA. 111+00 TO STA. 118+64

PIC-316 - 13.05-13.68
PART 2