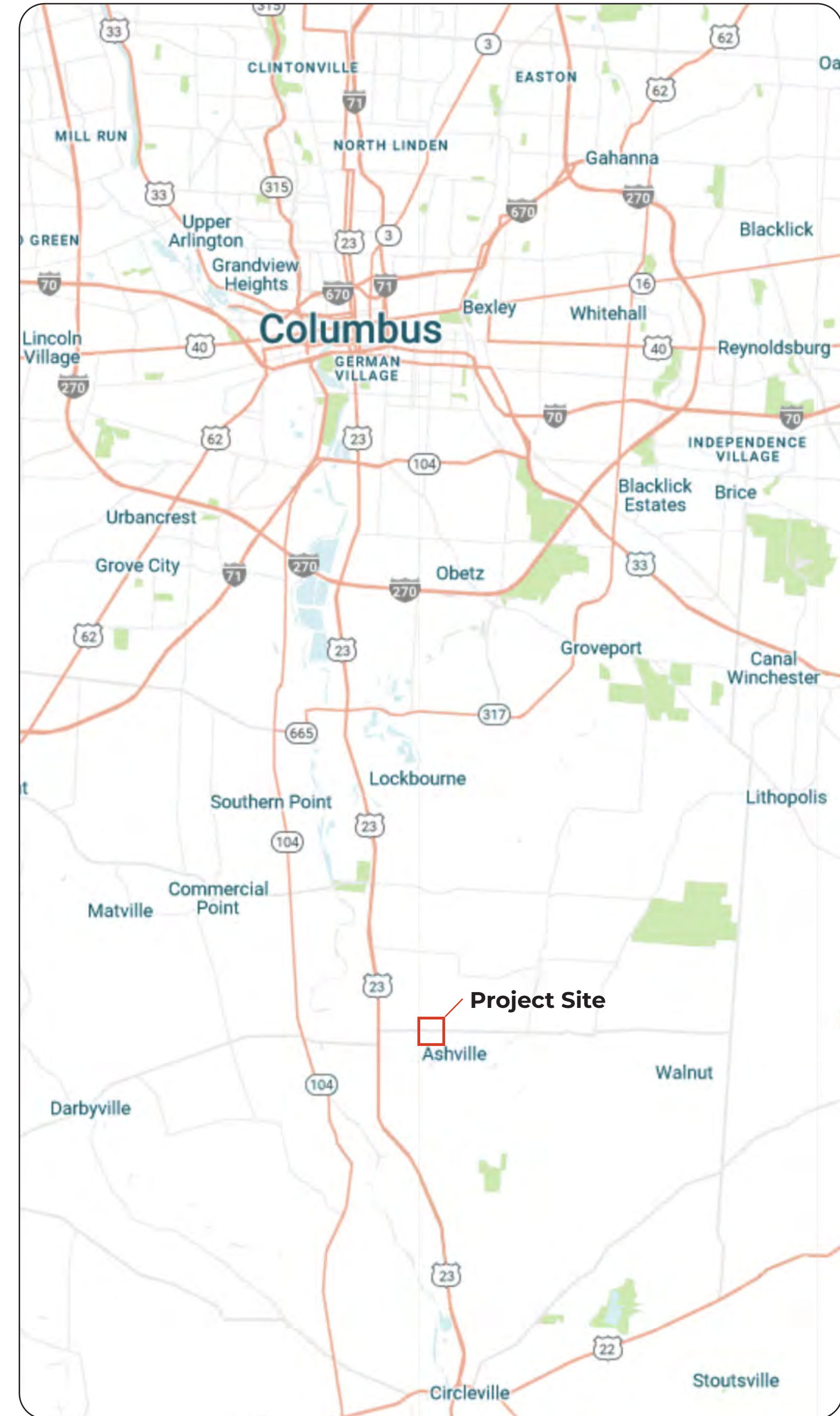
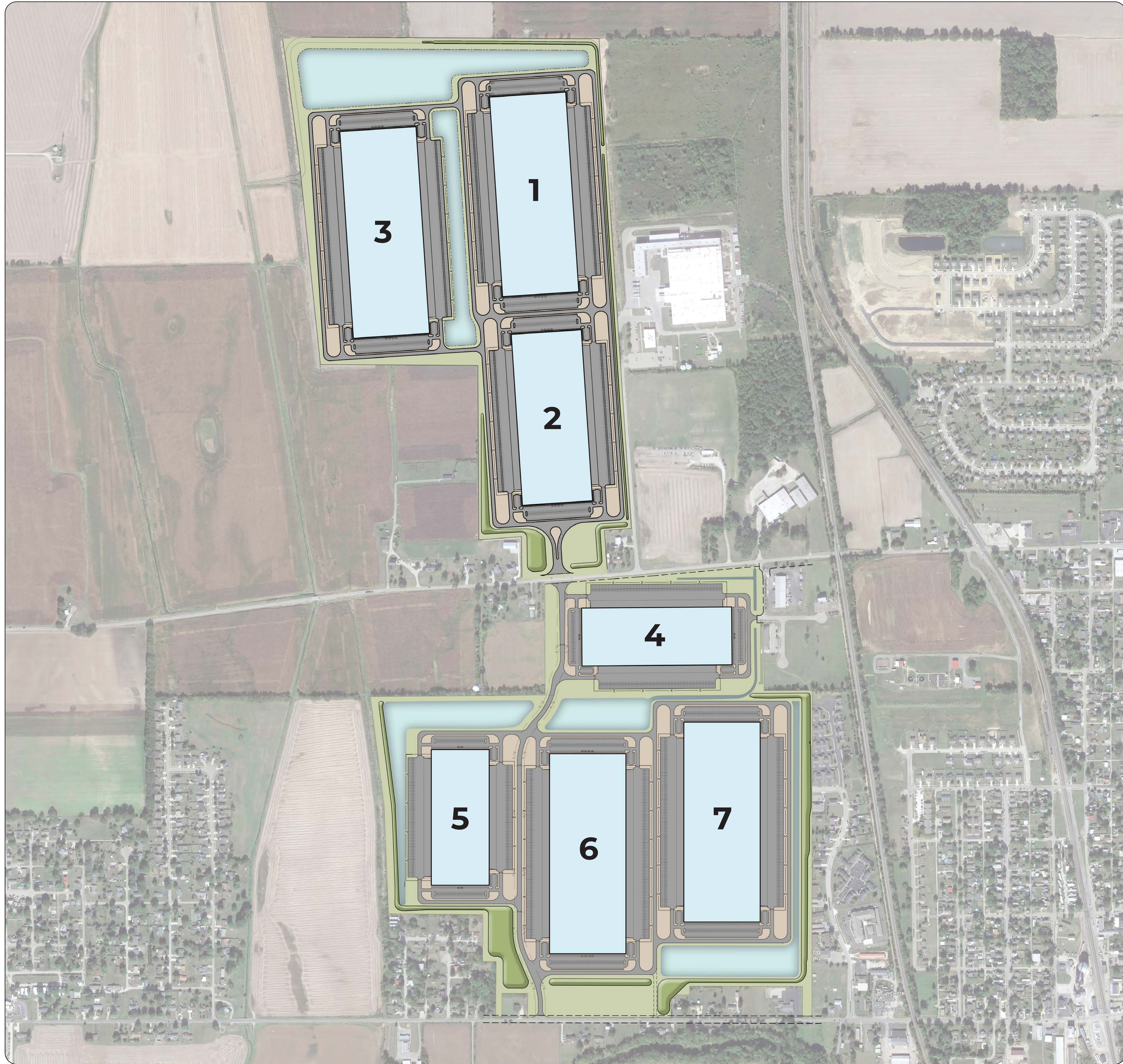


ANY INFORMATION OR DATA ON THIS DRAWING IS NOT INTENDED TO BE SUITABLE FOR REUSE BY ANY PERSON, FIRM OR CORPORATION OR ANY OTHERS ON EXTENSIONS OF THIS PROJECT OR FOR ANY OTHER PROJECT. ANY REUSE WITHOUT WRITTEN VERIFICATION AND ADAPTATION BY THE ENGINEER, ARCHITECT, OR SURVEYOR FOR THE SPECIFIC PURPOSE INTENDED WILL BE AT USERS SOLE RISK AND WITHOUT LIABILITY OR LEGAL EXPOSURE TO THE ENGINEER, ARCHITECT, SURVEYOR.




**POGEMEYER  
DESIGN GROUP**  
A KLEINFELDER COMPANY  
1168 NORTH MAIN STREET  
BOWLING GREEN, OH 43402  
PH: (419) 352-7537



**DHL-Ashville**  
Ashville OH

**Project Site**

DRAWN BY:	CHECKED BY:

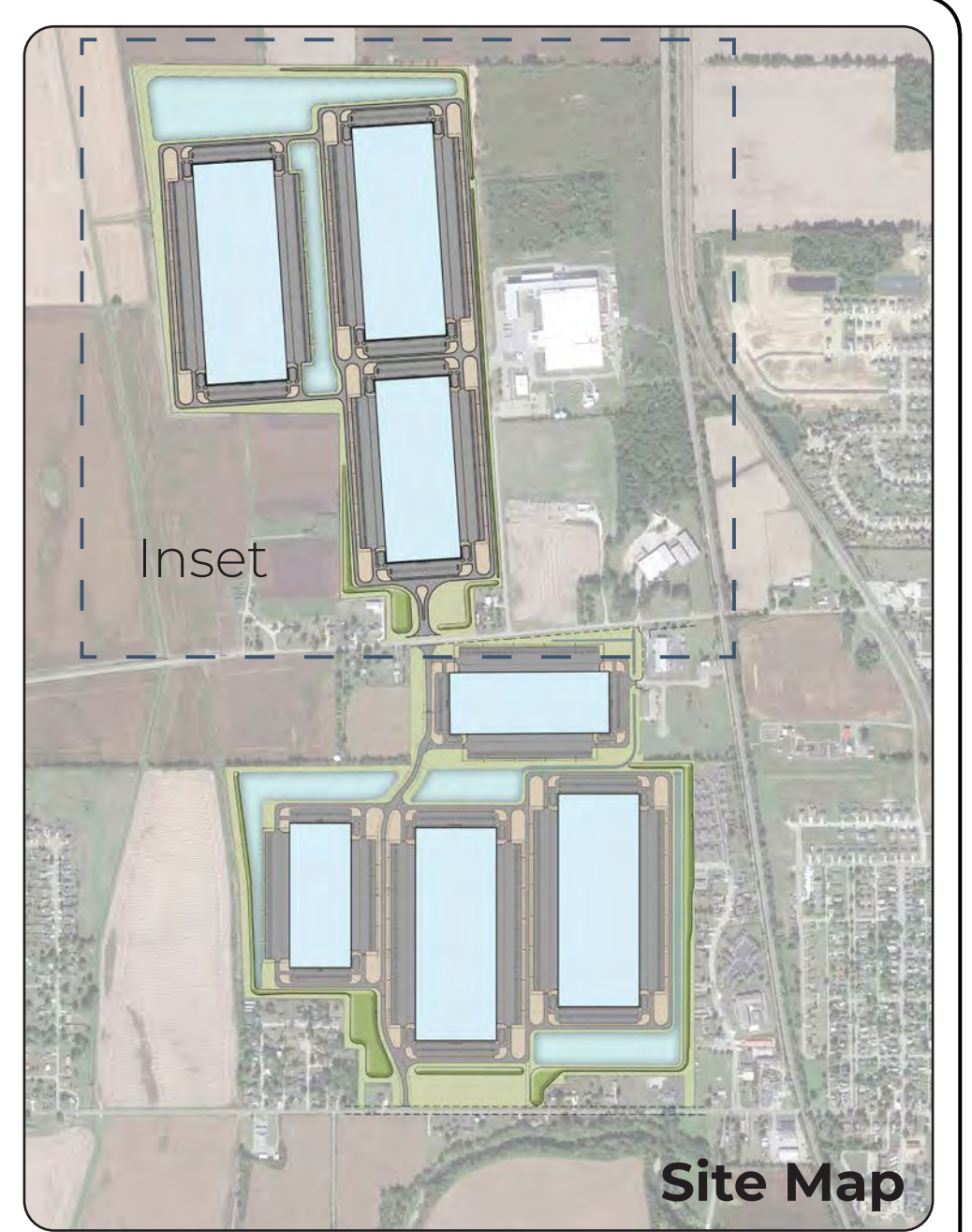
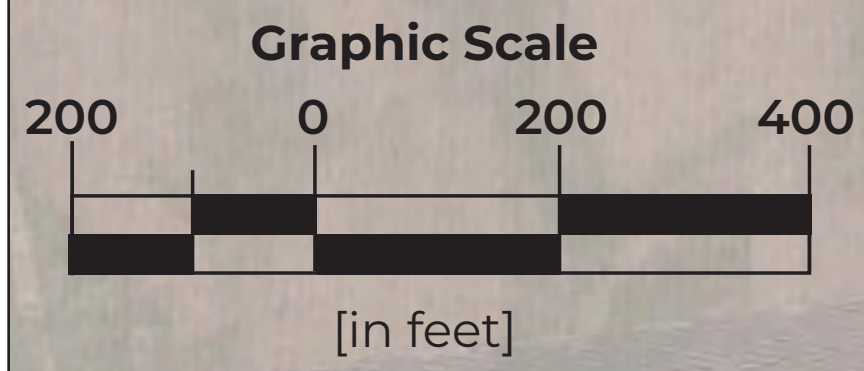
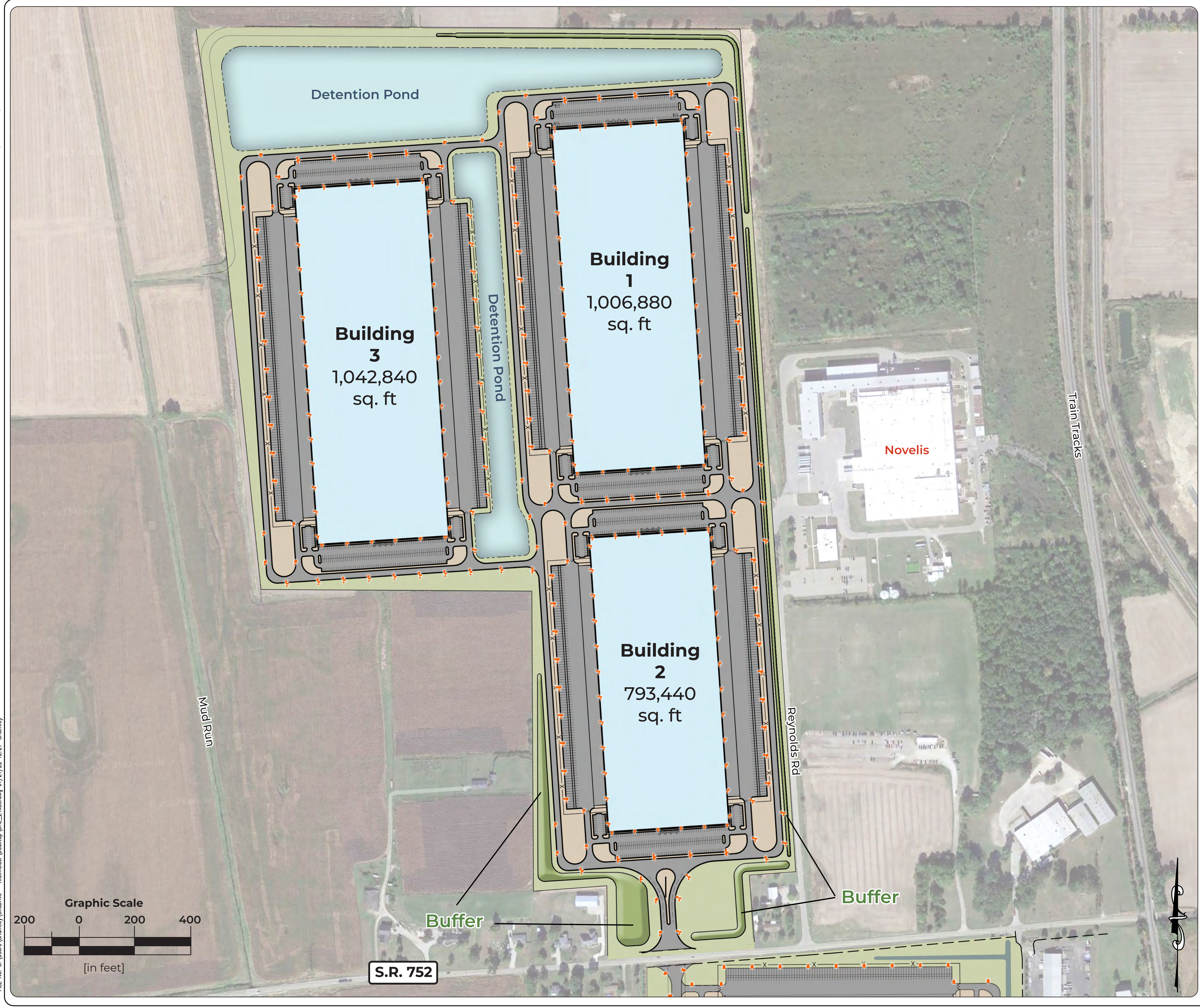
DATE:	04/12/2022
PROJECT NUMBER:	

REV.	DATE	DESCRIPTION
A	08/25/2021	SCHEMATIC DESIGN

FILE No. C:\Users\Shuntley\OneDrive - Kleinfielder\Desktop\QHL\_24x36.dwg 01/21/22 12:27 - Shuntley

ANY INFORMATION OR DATA ON THIS DRAWING IS NOT INTENDED TO BE SUITABLE FOR REUSE BY ANY PERSON, FIRM OR CORPORATION OR ANY OTHERS ON EXTENSIONS OF THIS PROJECT OR FOR ANY OTHER PROJECT. ANY REUSE WITHOUT WRITTEN VERIFICATION AND ADAPTATION BY THE ENGINEER, ARCHITECT, OR SURVEYOR FOR THE SPECIFIC PURPOSE INTENDED WILL BE AT USERS SOLE RISK AND WITHOUT LIABILITY OR LEGAL EXPOSURE TO THE ENGINEER, ARCHITECT, SURVEYOR.

FILE No. C:\Users\Shuntley\OneDrive - Kleinfielder\Desktop\QHL\_24x36.dwg 01/21/22 12:27 - Shuntley



- Key**
- Lighting Locations

**POGGEMEYER  
DESIGN GROUP**  
A KLEINFELDER COMPANY  
1168 NORTH MAIN STREET  
BOWLING GREEN, OH 43402  
PH: (419) 352-7537



**DHL-Ashville**  
Ashville OH

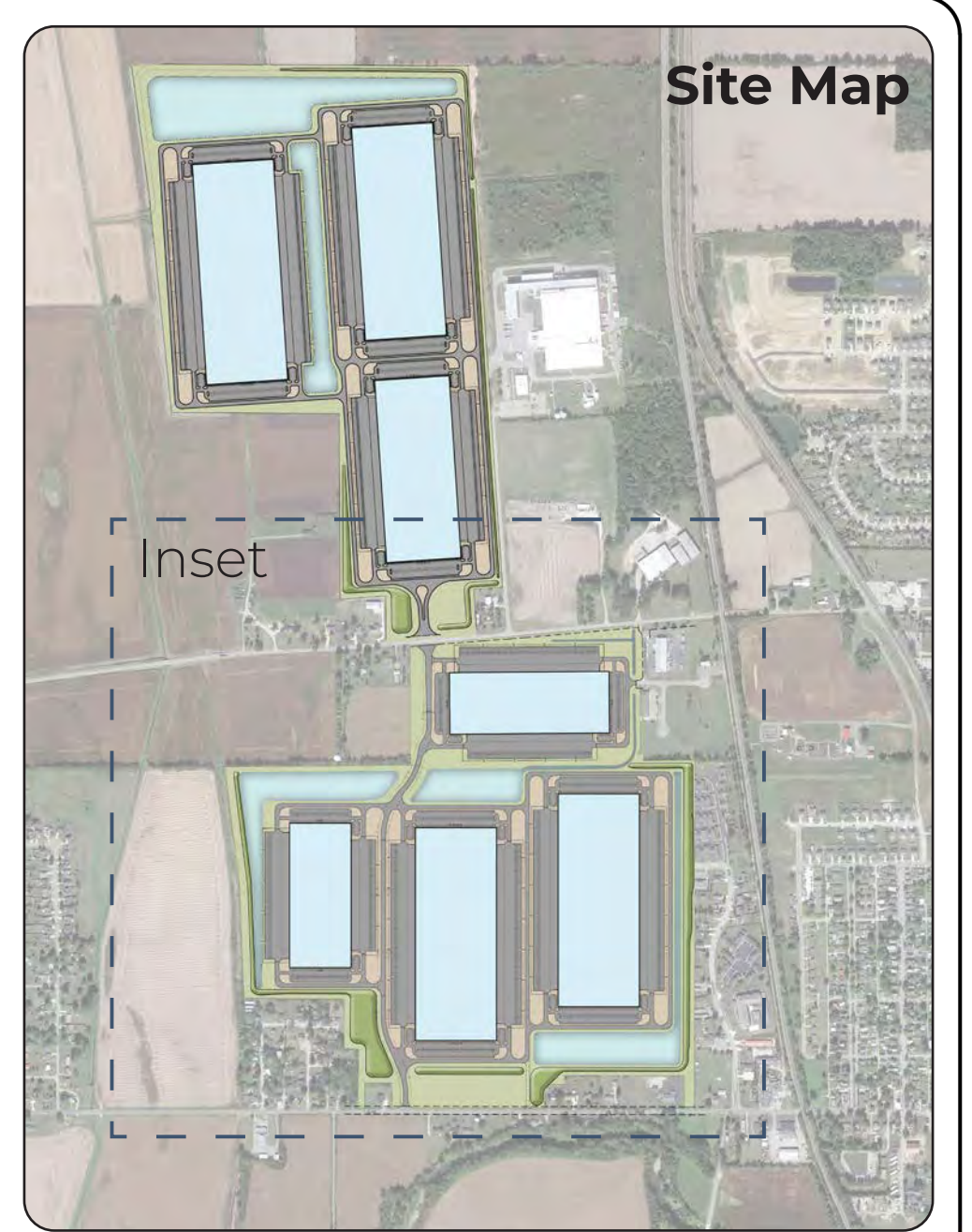
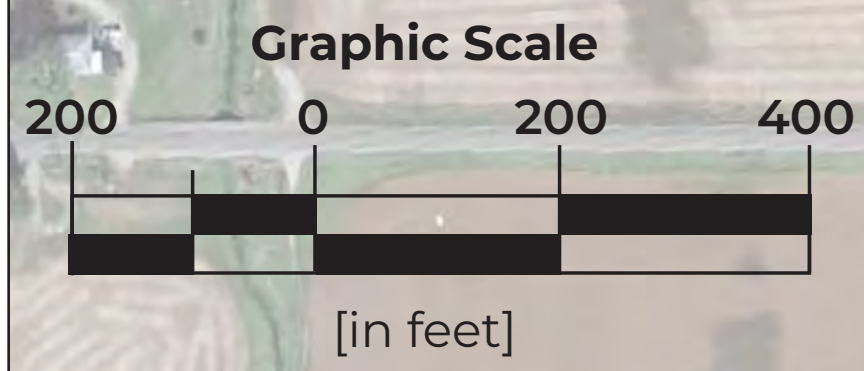
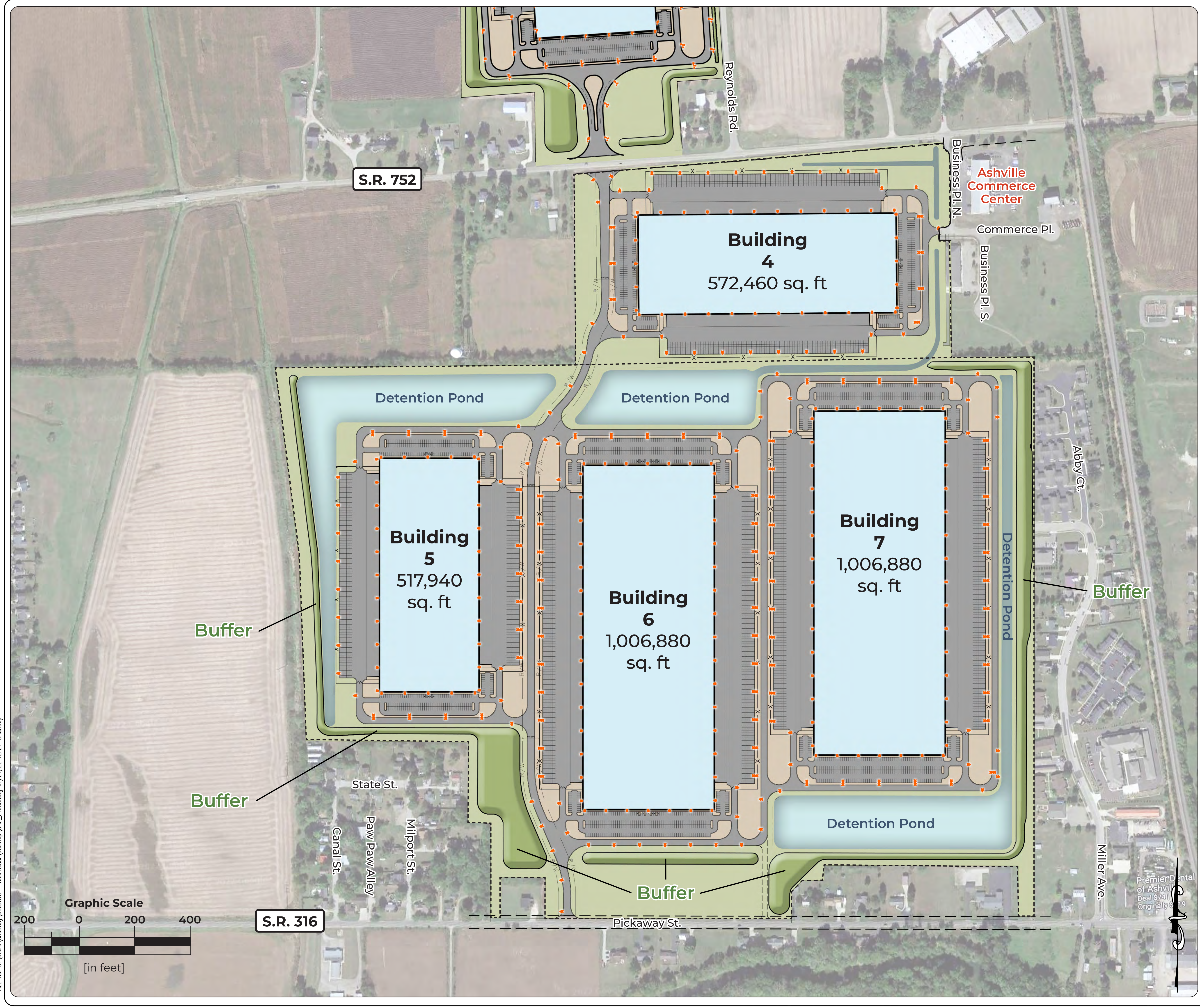
**Site Map North**

DRAWN BY	CHECKED BY
DATE	04/12/2022
PROJECT NUMBER	

REV.	DATE	DESCRIPTION
A	08/25/2021	SCHEMATIC DESIGN

ANY INFORMATION OR DATA ON THIS DRAWING IS NOT INTENDED TO BE SUITABLE FOR REUSE BY ANY PERSON, FIRM OR CORPORATION OR ANY OTHERS ON EXTENSIONS OF THIS PROJECT OR FOR ANY OTHER PROJECT. ANY REUSE WITHOUT WRITTEN VERIFICATION AND ADAPTATION BY THE ENGINEER, ARCHITECT, OR SURVEYOR FOR THE SPECIFIC PURPOSE INTENDED WILL BE AT USERS SOLE RISK AND WITHOUT LIABILITY OR LEGAL EXPOSURE TO THE ENGINEER, ARCHITECT, SURVEYOR.

FILE No. C:\Users\Shuntley\OneDrive - Kleinfielder\Desktop\QHL\_24x36.dwg 01/21/22 12:27 - Shuntley



**POGMEYER DESIGN GROUP**  
A KLEINFELDER COMPANY  
1168 NORTH MAIN STREET  
BOWLING GREEN, OH 43402  
PH: (419) 352-7537



**Key**

Lighting Locations

**DHL-Ashville**  
Ashville OH

**Site Map South**

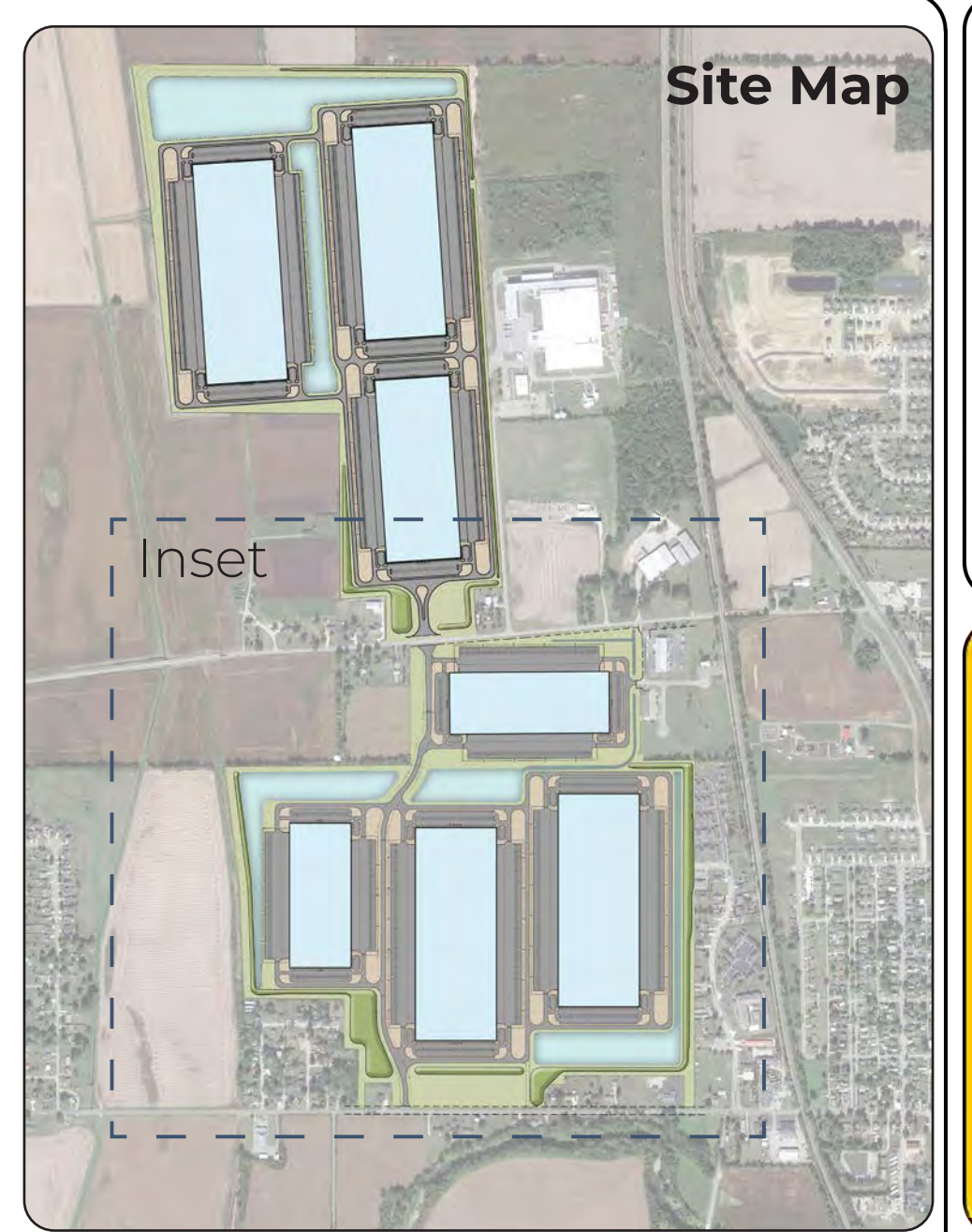
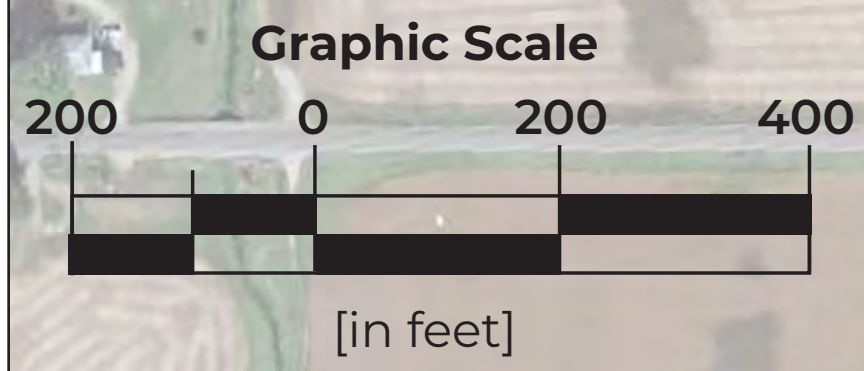
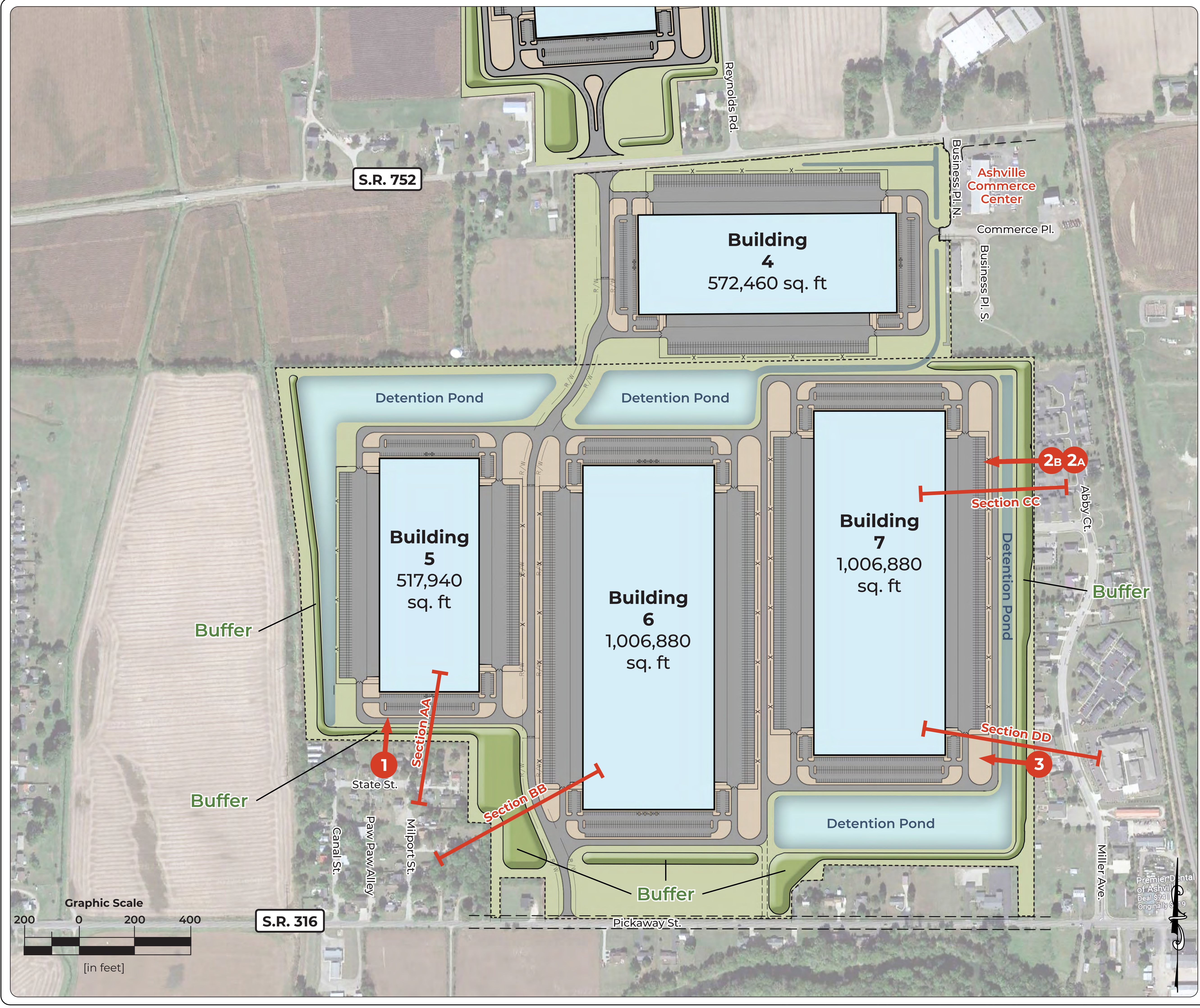
DRAWN BY: \_\_\_\_\_ CHECKED BY: \_\_\_\_\_

REV.	DATE	DESCRIPTION
A	08/25/2021	SCHEMATIC DESIGN

DATE: 04/12/2022

PROJECT NUMBER: \_\_\_\_\_

FILE No. C:\Users\Shuntley\Desktop\DH...\_24x36.dwg 01/21/22 12:27 - Shuntley  
 ANY INFORMATION OR DATA ON THIS DRAWING IS NOT INTENDED FOR REUSE BY ANY PERSON, FIRM OR CORPORATION OR ANY OTHERS ON EXTENSIONS OF THIS PROJECT OR FOR ANY USE ON ANY OTHER PROJECT. ANY REUSE WITHOUT WRITTEN VERIFICATION AND ADAPTATION BY THE ENGINEER, ARCHITECT, OR SURVEYOR FOR THE SPECIFIC PURPOSE INTENDED WILL BE AT USERS SOLE RISK AND WITHOUT LIABILITY OR LEGAL EXPOSURE TO THE ENGINEER, ARCHITECT, SURVEYOR.



**POGEMEYER DESIGN GROUP**  
 A KLEINFELDER COMPANY  
 1168 NORTH MAIN STREET  
 BOWLING GREEN, OH 43402  
 PH: (419) 352-7537



- Key**
- Photo Simulation Views
  - Section Cut Locations

**DHL-Ashville**  
 Ashville OH  
 LINE OF SIGHT ANALYSIS

**Site Map South**

DRAWN BY	CHECKED BY
DATE	04/12/2022
PROJECT NUMBER	

REV.	DATE	DESCRIPTION
A	08/25/2021	SCHEMATIC DESIGN

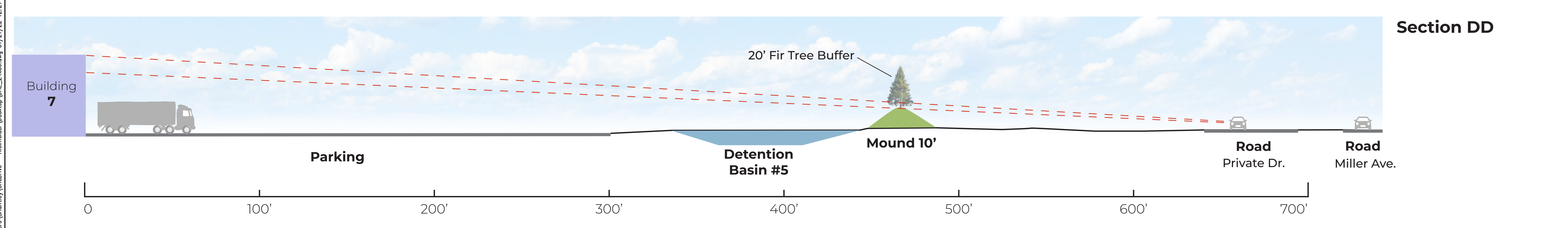
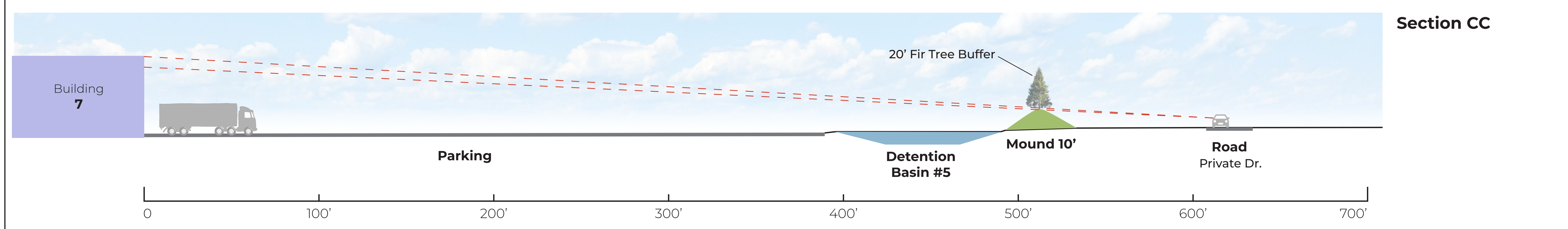
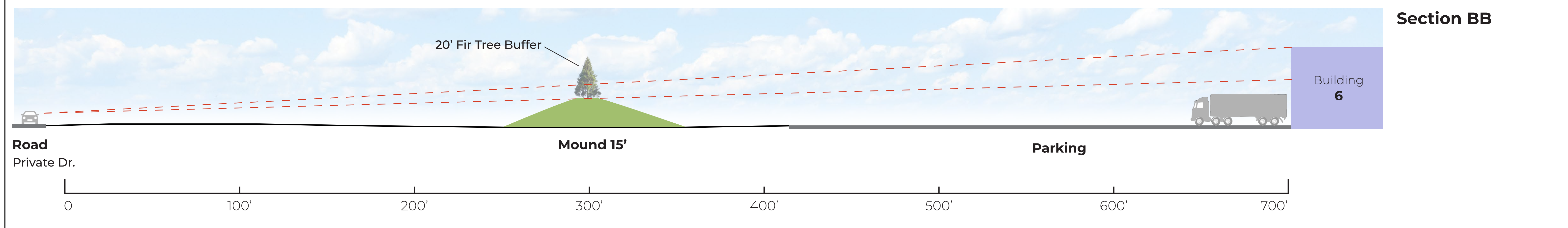
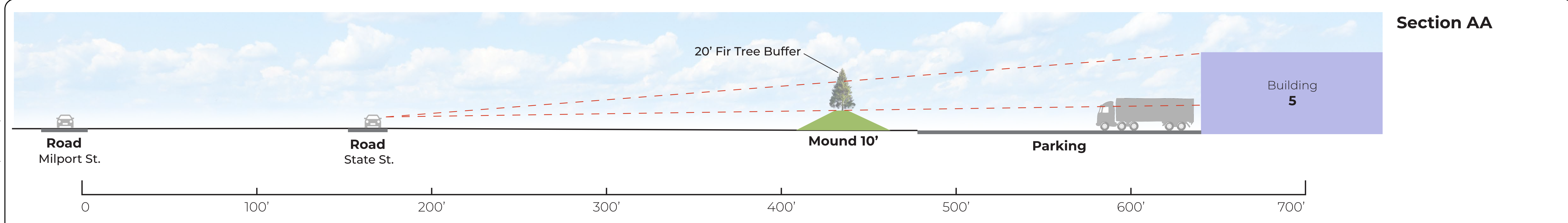
ANY INFORMATION OR DATA ON THIS DRAWING IS NOT INTENDED TO BE SUITABLE FOR REUSE BY ANY PERSON, FIRM OR CORPORATION OR ANY OTHERS ON EXTENSIONS OF THIS PROJECT OR FOR ANY OTHER PROJECT. ANY REUSE WITHOUT WRITTEN VERIFICATION AND ADAPTATION BY THE ENGINEER, ARCHITECT, OR SURVEYOR FOR THE SPECIFIC PURPOSE INTENDED WILL BE AT USERS SOLE RISK AND WITHOUT LIABILITY OR LEGAL EXPOSURE TO THE ENGINEER, ARCHITECT, SURVEYOR.



**DHL-Ashville**  
Ashville OH  
LINE OF SIGHT ANALYSIS

**Section Cuts**

DRAWN BY	CHECKED BY
DATE	PROJECT NUMBER



A	08/25/2021	SCHEMATIC DESIGN
REV.	DATE	DESCRIPTION